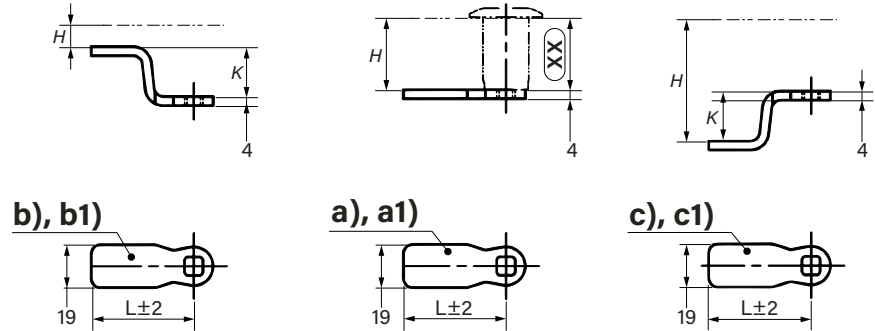
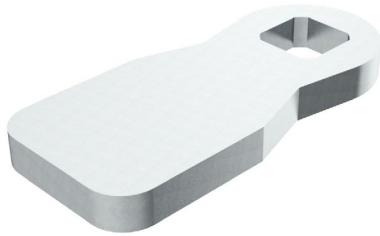


Cam - 45mm



Cams without ramp and stop.

- Stainless steel AISI 304
- LH / RH

a), a1) = straight cam (XX)

(XX) = housing length, measured from the upper edge of the panel to the upper edge of the cam.

b), b1) = negatively bent cam (upwards)

c), c1) = positively bent cam (downwards)

Formula for H-dimension =

for negatively bent cams K will be subtracted from (XX),

for positively bent cams K will be added to (XX)

Part No.	b) negatively bent K =	c) positively bent K =
59968	H = 0	H = 0
59967	H = 2	H = 2
59966	H = 4	H = 4
59965	H = 6	H = 6
59964	H = 8	H = 8
59963	H = 10	H = 10
56011	H = 12	H = 12
57708	H = 14	H = 14
59623	H = 16	H = 16
59962	H = 18	H = 18
59961	H = 20	H = 20
59960	H = 22	H = 22

All dimensions shown in mm unless otherwise stated. We reserve the right to alter specifications without notice.

Order online at
www.faparkes.co.uk

Your One-Stop-Shop for all your hardware requirements!

