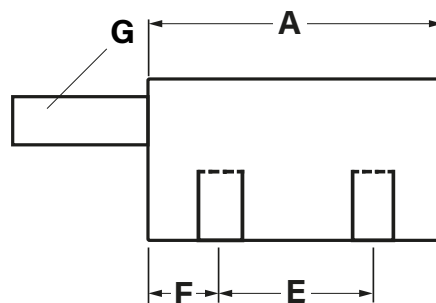
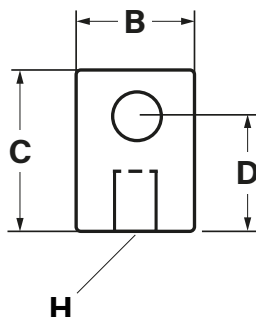
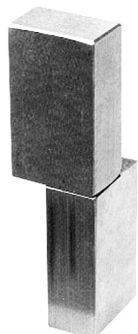


## Stainless Block Hinge



These machined block hinges suit high-quality cabinets and enclosures, where stainless steel fittings are required. Bottom half of the hinge contains a fixed stainless pin and is fitted to door frame. Top half is fitted to door edge and is lifted on (and off) pin. Movement is completely free.

- For surface mounted doors for single cabinets
- External hinge
- Stainless steel to Grade 303 throughout.
- Opening angle: 180°
- LH / RH

Part No.	Hinge Length	A	B	C	D	E	F	G	H
51643	76mm	38	13	19	13	19	9	6	7.5mm x M6

All dimensions shown in mm unless otherwise stated. We reserve the right to alter specifications without notice.



Thousands of products available to buy online



Reliable international delivery service



The UK's leading stockist of locks, handles, hinges gas springs & accessories

Order online at  
[www.faparkes.co.uk](http://www.faparkes.co.uk)

Your *One-Stop-Shop* for all your hardware requirements!



FA Parkes Ltd  
Unit 4, Acorn Court  
Butts Street,  
Leigh  
Lancashire, UK  
WN7 3AE



+44 (0) 1942 681 996



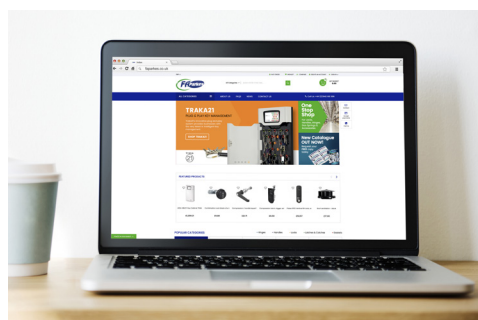
+44 (0) 1942 681 997



[www.faparkes.co.uk](http://www.faparkes.co.uk)



[sales@faparkes.co.uk](mailto:sales@faparkes.co.uk)



- Search by keyword or part number
- Browse by part type
- Product datasheet downloads
- No sign up required!

