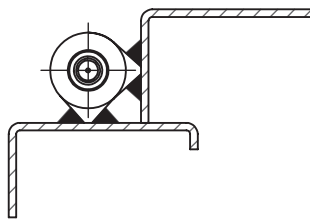


Universal LH / RH



Lift-off



Specifications subject to change without notice

## WELD-ON HINGE WITH GREASE NIPPLE. 80 - 200 mm

Weld-on hinge with grease nipple. Universal left and right mounting.

**MATERIAL:**

Hinge body: Extruded steel profile.  
Pin and washer: Brass.

### WELD-ON HINGE WITH GREASE NIPPLE. 80 - 200 mm

| P/N         | L   | d    | D    | S    |
|-------------|-----|------|------|------|
| 338005-A080 | 80  | 8,0  | 13,0 | 16,0 |
| 338005-A100 | 100 | 10,0 | 16,0 | 20,0 |
| 338005-A120 | 120 | 10,0 | 16,0 | 20,0 |
| 338005-A135 | 135 | 12,0 | 18,0 | 22,0 |
| 338005-A140 | 140 | 13,0 | 20,0 | 25,0 |
| 338005-A150 | 150 | 13,0 | 20,0 | 25,0 |
| 338005-A160 | 160 | 13,0 | 20,0 | 25,0 |
| 338005-A180 | 180 | 14,0 | 20,0 | 25,0 |
| 338005-A200 | 200 | 16,0 | 23,0 | 29,0 |