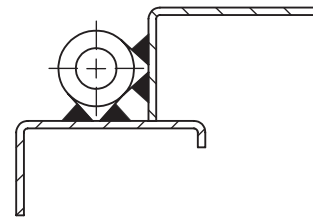


Universal LH / RH



Lift-off



Specifications subject to change without notice

ALUMINIUM WELD-ON HINGE 60 - 180 mm

Aluminium weld-on hinge. Universal left and right mounting.

MATERIAL:

Hinge body: Extruded aluminium profile.
Pin and washer: Stainless steel (303).

ALUMINIUM WELD-ON HINGE 60 - 180 mm				
P/N	L	d	D	S
334000-A060	60	6,0	10,0	12,0
334000-A070	70	6,0	11,5	13,5
334000-A080	80	8,0	13,0	16,0
334000-A100	100	10,0	16,0	20,0
334000-A120	120	10,0	16,0	20,0
334000-A150	150	13,0	20,0	25,0
334000-A180	180	14,0	20,0	25,0