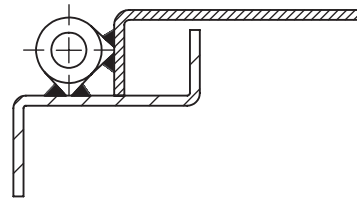


Universal LH / RH



Lift-off



WELD-ON HINGE 40 - 200 mm

Weld-on hinge with fixed pin. Universal left and right mounting.

Stainless version: Page 6-460.

MATERIAL:

Hinge body: Extruded steel profile.

Pin: Steel or brass (see table).

Washer: Brass.

WELD-ON HINGE 40 - 200 mm					
P/N, steel pin	P/N, brass pin	L	d	D	S
332000-A040	338000-A040	40	5,0	8,0	10,0
332000-A050	338000-A050	50	5,0	8,0	10,0
332000-A060	338000-A060	60	6,0	10,0	12,0
332000-A070	338000-A070	70	6,0	11,5	13,5
332000-A080	338000-A080	80	8,0	13,0	16,0
332000-A100	338000-A100	100	10,0	16,0	20,0
332000-A120	338000-A120	120	10,0	16,0	20,0
332000-A135	338000-A135	135	12,0	18,0	22,0
332000-A140	338000-A140	140	13,0	20,0	25,0
332000-A150	338000-A150	150	13,0	20,0	25,0
332000-A160	338000-A160	160	13,0	20,0	25,0
332000-A180	338000-A180	180	14,0	20,0	25,0
332000-A200	338000-A200	200	16,0	23,0	29,0

Specifications subject to change without notice