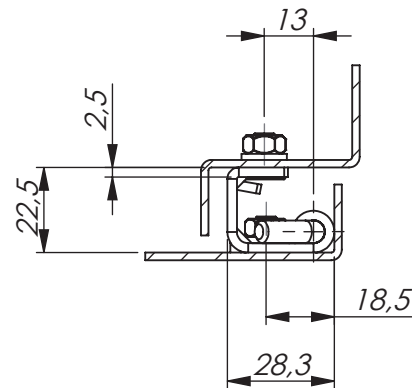


Opening angle



Universal LH / RH



Specifications subject to change without notice

CONCEALED HINGE - 120° OPENING ANGLE

Screw mounted frame part, door part mounted on weld-on studs.
Universal right and left mounting. Opening angle 120°. Supplied with E-clip.

Vision™ system components: Chapter 1.

MATERIAL:

Steel, zinc plated.

CONCEALED HINGE - 120° OPENING ANGLE	
P/N	Description
312119	Concealed hinge