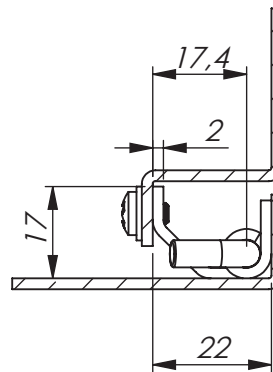


Opening angle



Universal LH / RH



Specifications subject to change without notice

CONCEALED HINGE - 120° OPENING ANGLE

Concealed hinge for mounting inside externally mounted doors.

Universal left and right mounting. Opening angle 120°. Weld-on and screw mounting in combinations according to table. E-clip to be ordered separately.

Stainless version: Page 6-310.

MATERIAL:

Frame part and pin: Steel, zinc plated.

Door part: Steel unplated.

* Unplated.

CONCEALED HINGE - 120° OPENING ANGLE

P/N	Description	Material	Door part	Frame part
312106	Concealed hinge	Steel	Weld-on *	Weld-on *
312107	Concealed hinge	Steel	Weld-on *	Screw
062193	E-clip	Steel	-	-