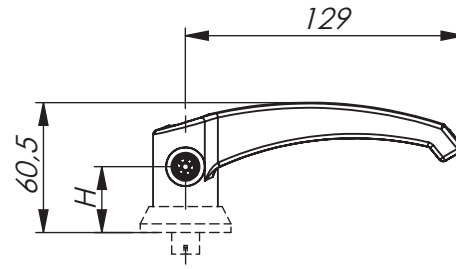
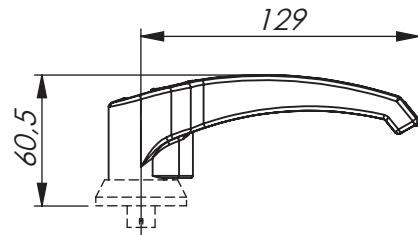
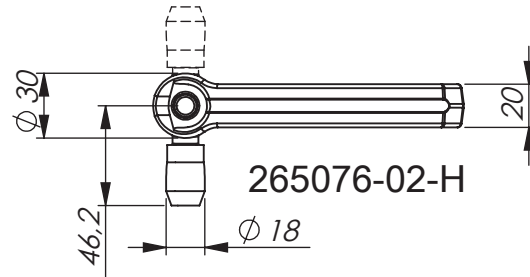
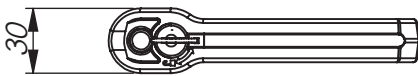


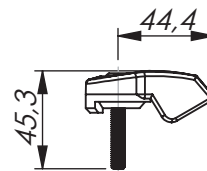
265076-10



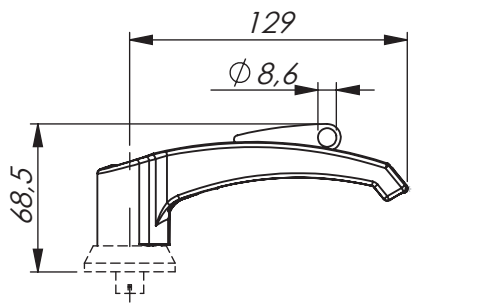
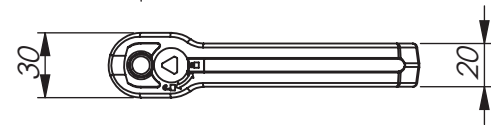
265076-02-H



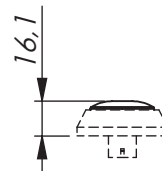
265076-3012



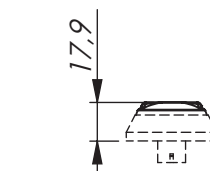
265077-00



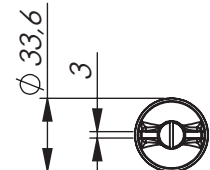
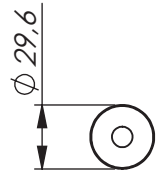
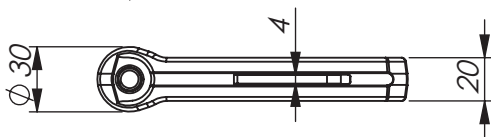
265076-60



265078-301



265076-302





Padlock loop



Universal LH / RH

HVAC HANDLES - SYSTEM KLIMAFLEX™

HVAC handles - system Klimaflex™ is a latching system in locking or non-locking versions, for HVAC applications. The Klimaflex™ system is designed for quick and easy mounting of the handles on site. Handles for both inswing or outswing doors. Handles for inswing doors are supplied with customized roller cam. For customized cam-height, exchange the -H with the desired height in mm. Customized cams (marked ¹) are available on request only. Locking versions use key extraction: Open / closed.

* Supplied with two keys.

To build a complete unit:

Latching units: Page 2-311a/b.

Standard cams: page 2-481.

Roller cams: Page 2-312a/b.

Rod links and rods: Page 2-313a/b.

Safety handles: Page 2-312b.

Safety latches: Page 2-314.

Keys: Page 2-370 and 2-372.

MATERIAL:

Handle and roller: Glass fibre reinforced polyamide (PA6), black.

Insert: Zinc die-cast, chrome plated.

Cylinder: Zinc die-cast, stainless steel (304) cap and dust shutter.

Padlock loop: Steel, zinc plated.

Outside roller cam shaft: Steel, zinc plated.

HVAC HANDLES - SYSTEM KLIMAFLEX			
P/N	Description	Door	Outside roller cam included
265076-00	Non-locking	Outswing	-
265076-02-H ¹	Non-locking	Inswing	Yes
265076-IL10	Keyed alike IL101	Outswing	-
265076-10	Keyed alike IL0333 *	Outswing	-
265076-12-H ¹	Keyed alike IL0333 *	Inswing	Yes
265076-20	Keyed to differ	Outswing	-
265076-22-H ¹	Keyed to differ	Inswing	Yes
265076-62-H ¹	Padlockable	Inswing	Yes
265076-60	Padlockable	Outswing	-
265076-3009	Insert Square 8	Outswing	-
265076-3209-H ¹	Insert Square 8	Inswing	Yes
265076-3012	Insert Triangle 7	Outswing	-
265076-3212-H ¹	Insert Triangle 7	Inswing	Yes
265076-3023	Insert Recessed hexagon 8 (5/16")	Outswing	-
265076-3223-H ¹	Insert Recessed hexagon 8 (5/16")	Inswing	Yes
265077-00	Knob	Outswing	-
265078-301	Cover plug for latching units	-	-
265078-302	Slotted cover plug for latching units	-	-

Specifications subject to change without notice