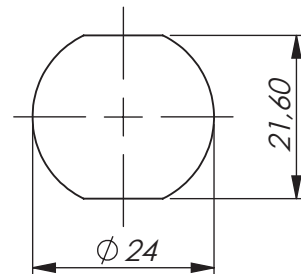
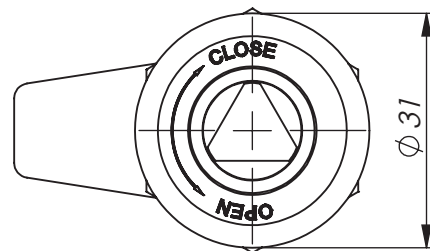


Universal LH / RH



## COMPRESSION LATCH - 21,5 mm

Compression latch for compression of sealing profiles etc. The latch is supplied fully assembled.

Note that the H-dimension describes the cam in compressed position. Compression stroke 6 mm.

Keys: Page 2-370 and 2-372.

\* Straight cam.

### MATERIAL:

Housing: Zinc die-cast, zinc plated.

Insert: Brass, nickel plated.

Nut: Brass, zinc plated.

Spring and cam: Stainless steel (304).

### QUARTER-TURN - 21,5 mm

P/N	Description	Cam dimensions XX (H/L in mm)				
		18.0 / 30	21.5 / 31,5	27.0 / 30	20.0 / 45	21.5 / 45
241755-XX	Triangle 10	01	02 *	03	04	05 *
241756-XX	Triangle 10 / SEN	01	02 *	03	04	05 *
241757-XX	Double Bit 3	01	02 *	03	04	05 *
241762-XX	Double Bit 5	01	02 *	03	04	05 *
241758-XX	Square 8	01	02 *	03	04	05 *
241759-XX	Square 7	01	02 *	03	04	05 *
241760-XX	Triangle 7	01	02 *	03	04	05 *
241761-XX	Triangle 8	01	02 *	03	04	05 *
241763-XX	Slotted	01	02 *	03	04	05 *
241766-XX	Recessed Hexagon 8	01	02 *	03	04	05 *
291138	Knob (optional). Fits Triangle 10 / SEN-insert	-	-	-	-	-