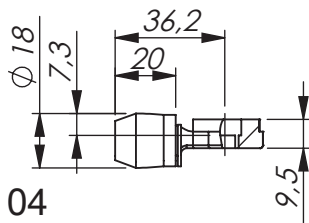
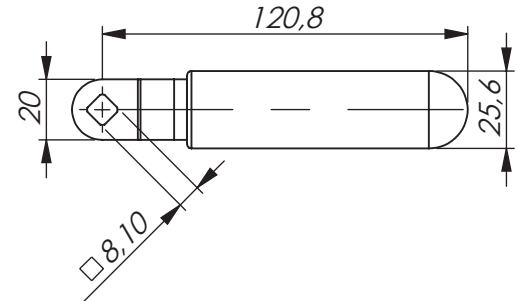
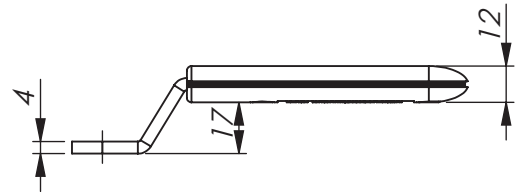
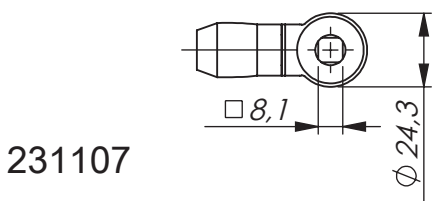
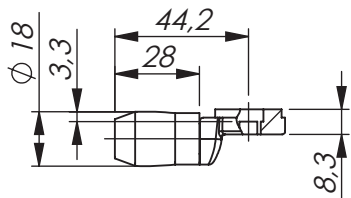


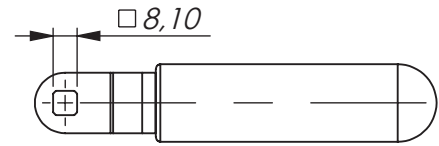
231101.2



231104



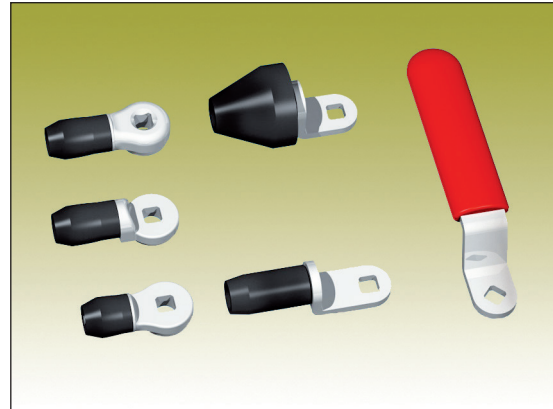
265076-50



265076-52



Specifications subject to change without notice



Specifications subject to change without notice

ROLLER CAMS AND INSIDE HANDLES - SYSTEM KLIMAFLEX™

Roller cams and inside handles - System Klimaflex™ for HVAC* applications. The Klimaflex™ system is designed for quick and easy mounting. Roller cams reduces the friction in the latching operation and increase the gasket compression.

*HVAC = Heating, Ventilation and Air Conditioning.

Interlink rods: Page 2-313a and 2-313b.

Note: Inside handle is only approved in combination with non-locking outside handle.

MATERIAL:

Handle: Steel, zinc plated and glass fibre reinforced polyamide (PA6), black or red.

Roller cam: Zinc die-cast, zinc plated, steel, zinc plated and glass fibre reinforced polyamide (PA6), black.

ROLLER CAMS AND INSIDE HANDLES - SYSTEM KLIMAFLEX™

P/N	Description	For locking unit	P/N	Description	For locking unit
231101.1	Roller cam	-G50, -GC50	231101.2	Roller cam	All
231104	Roller cam, short version	All	231107	Roller cam	All
2321S07-R01	Roller cam - roller diameter 37,7 mm	All	2321S07-R05	Roller cam - roller diameter 17,6 mm	All
265076-50	Inside red handle, diagonal mounting	All	265076-51	Inside black handle, diagonal mounting	All
265076-52	Inside red handle, vertical/horizontal mounting	All	265076-53	Inside black handle, vertical/horizontal mounting	All