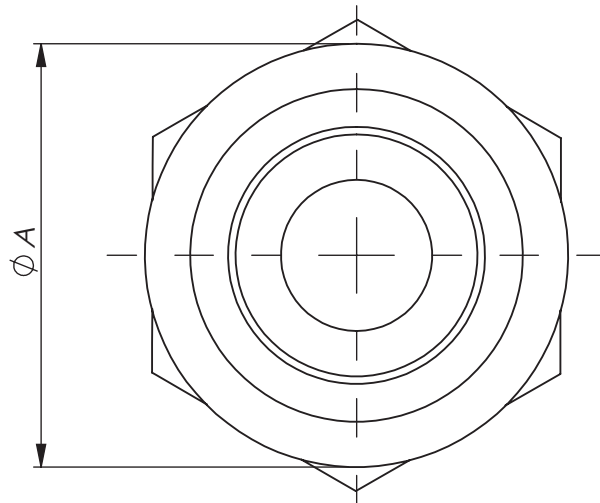
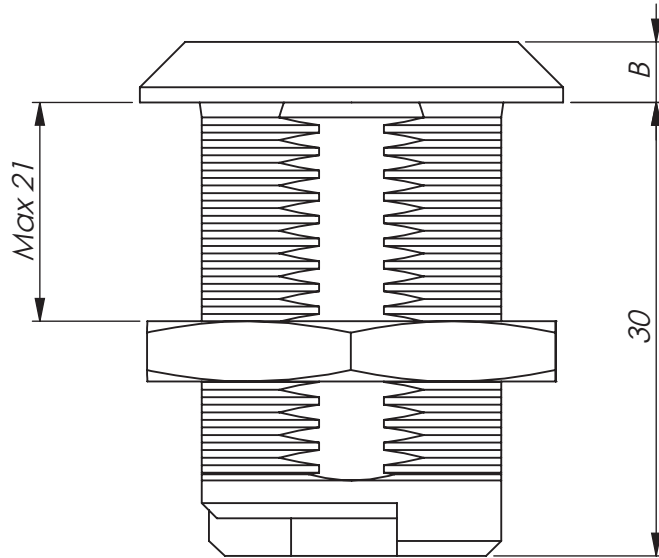




Universal LH / RH



## HOUSING FOR QUARTER-TURN LATCH - 30 mm



Housing with external limitation of the rotation. Universal clockwise or counter-clockwise rotation when opening / closing. Supplied with nut.

Earthing nut is recommended for all applications where electricity is connected.

Complete lock assembly: Page 2-050a.

Inserts: Page 2-052.

Cams: Page 2-480, 2-490, 2-510 and 2-520.

Stainless version: Page 6-120.

**MATERIAL:**

Housing: Zinc die-cast, chrome plated or black texture powder coated.

Standard and Earthing nut: Zinc die-cast, zinc plated.

Specifications subject to change without notice

### HOUSING FOR QUARTER-TURN LATCH - 30 mm

P/N	Description	Material	Surface treatment	Nut	A	B
211320	Housing	Zinc	Chrome	Standard	28	4
211321	Housing	Zinc	Chrome	Earthing nut	28	4
211322	Housing	Zinc	Chrome	Standard	32	6
211323	Housing	Zinc	Chrome	Earthing nut	32	6
211620	Housing	Zinc	Black	Standard	28	4
211621	Housing	Zinc	Black	Earthing nut	28	4
211622	Housing	Zinc	Black	Standard	32	6
211623	Housing	Zinc	Black	Earthing nut	32	6