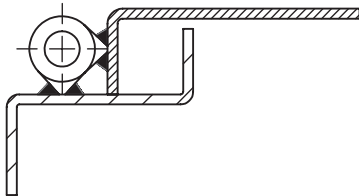


Universal LH / RH



Lift-off



Specifications subject to change without notice

## STAINLESS WELD-ON HINGE 60 - 180 mm

Stainless steel weld-on hinge. Lift-off design.  
Universal left and right mounting.

Steel version: Page 3-592.

**MATERIAL:**

Stainless steel (303).

STAINLESS / ACID-PROOF WELD-ON HINGE 60 - 180 mm					
P/N	Material	L	d	D	S
333001-A060	SS (303)	60	6,0	10,0	12,0
333001-A080	SS (303)	80	8,0	13,0	15,5
333001-A100	SS (303)	100	10,0	16,0	20,0
333001-A120	SS (303)	120	11,0	16,0	20,0
333001-A150	SS (303)	150	13,0	20,0	25,0
333001-A180	SS (303)	180	14,0	20,0	25,0