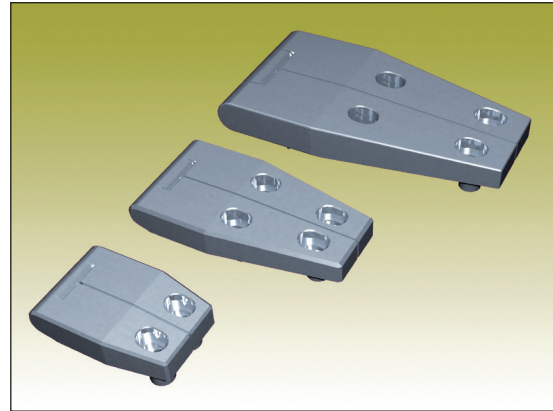


Specifications subject to change without notice



Opening angle



Universal LH / RH



Adjustable 3 mm

Specifications subject to change without notice

## ADJUSTABLE HINGE FOR INSULATED DOORS - SYSTEM KLIMAFLEX™ - 180° OPENING ANGLE

Specifically designed hinges to simplify mounting on insulated (double skinned) doors. Adjustable in the X- and Y-axis by 3 mm. Opening angle 180°. Supplied with mounting plate.

Zinc version: Page 3-160.

### MATERIAL:

Hinge: Stainless steel (304), polished.  
Mounting plate: Stainless steel (304), plain.  
Pin: Stainless steel (304), plain.

### ADJUSTABLE HINGE FOR INSULATED DOORS - SYSTEM KLIMAFLEX™ - 180° OPENING ANGLE

| P/N SS (304) | B  | L   | Drawing on page 6-355a |
|--------------|----|-----|------------------------|
| 323050       | 40 | 61  | A                      |
| 323051       | 50 | 95  | B                      |
| 323052       | 70 | 133 | C                      |