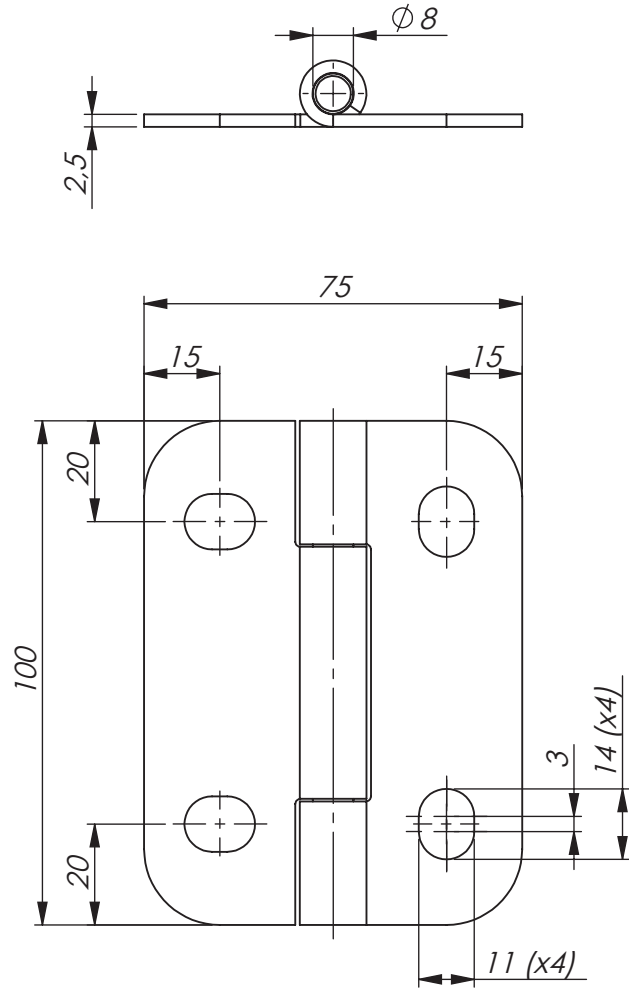




Universal LH / RH



Adjustable 3 mm



Specifications subject to change without notice

STAINLESS HEAVY-DUTY HINGE

Stainless heavy-duty hinge. Adjustable horizontally and vertically. Universal left or right mounting.

MATERIAL:

Stainless steel (304), electro-polished or black coated.

STAINLESS HEAVY-DUTY HINGE	
P/N	Description
323027	Electro-polished
323527	Black coated