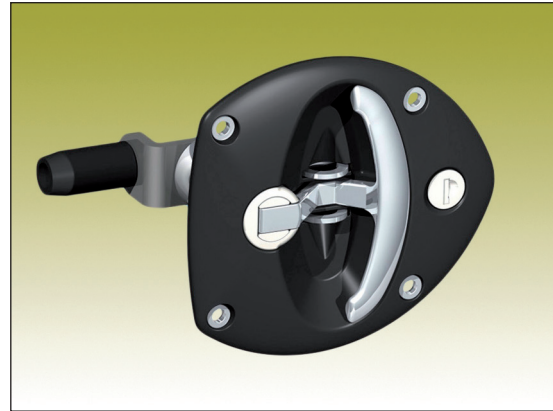


Specifications subject to change without notice





Padlock loop



Universal LH / RH

## VECTOR™ T-HANDLE - SCREW OR RIVET MOUNTING

Flush T-handle with 4 mm compression stroke, in zinc or stainless version. Mounting with screws or rivets. The Vector™ T-handle features two independent locking systems: key-locking cylinder and retractable padlock loop (Ø 8 mm) which prevents the handle from being lifted or turned. Handle rotation 90° right, 90° left or 180°. Five different cam versions available. Optional handle-shaped flat gasket: P/N 275020-31 will improve sealing against door. Locking handle supplied with two keys. Key extraction: Open / closed.

On request the handle can be supplied with a separate, unassembled cylinder. This will simplify handling and enable smooth adaptation to different key combinations for various needs.

### Example:

Handle in zinc die-cast, black, keyed to differ, 90° clockwise rotation and adjustable three-point cam = P/N 275021-02HS.

For rods that fit the two- and three-point cams, see pages 2-540 to 2-545.

### MATERIAL:

Body and roller: Glass fibre reinforced polyamide (PA6), black.  
Handle: Zinc die-cast, chrome plated, black texture powder coated or stainless steel (304), plain or black texture powder coated.

Fixed cam: Steel, zinc plated.

Adjustable cam: Zinc die-cast, passivated.

Shaft: Steel, zinc plated, zinc, zinc plated or stainless steel (304).

Padlock loop: Stainless steel (304).

Cylinder: Zinc die-cast, stainless steel (304) cap and dust shutter.

\* Other dimensions on request.

### CREATE P/N FOR VECTOR™ T-HANDLE (AAAAAA-BBCDDDDD)

AAAAAA-	Handle/Shaft	Handle	BB	Cylinder	C	Opening rotation	DDDDD	Cam	H =	L =
272021-	Zinc / Steel	Black	00	Non-locking	H	90° clockwise	5861	* Fixed roller cam	58	61
272321-	Zinc / Steel	Chrome	02	Keyed to differ	V	90° counter-clockwise	S5400	Two-point cam	-	-
273021-	SS (304) / (303)	Black	06	Keyed alike (751)	-	180°	S6685	* Fixed three-point roller cam	66	85
273921-	SS (304) / (303)	Plain					S	Adjustable three-point cam	10-60	61
275021-	Zinc / Zinc	Black					S1	Adjustable single point cam	10-60	61
275321-	Zinc / Zinc	Chrome								

Specifications subject to change without notice