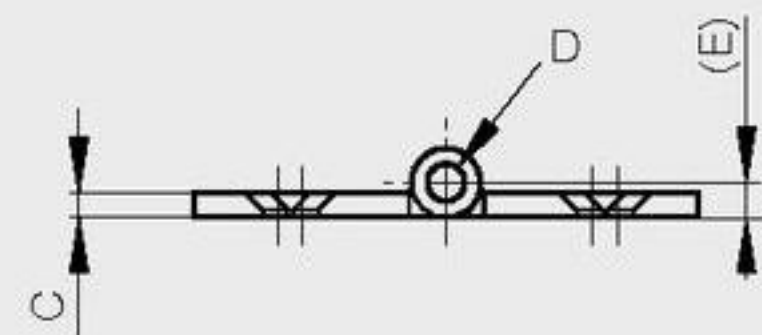
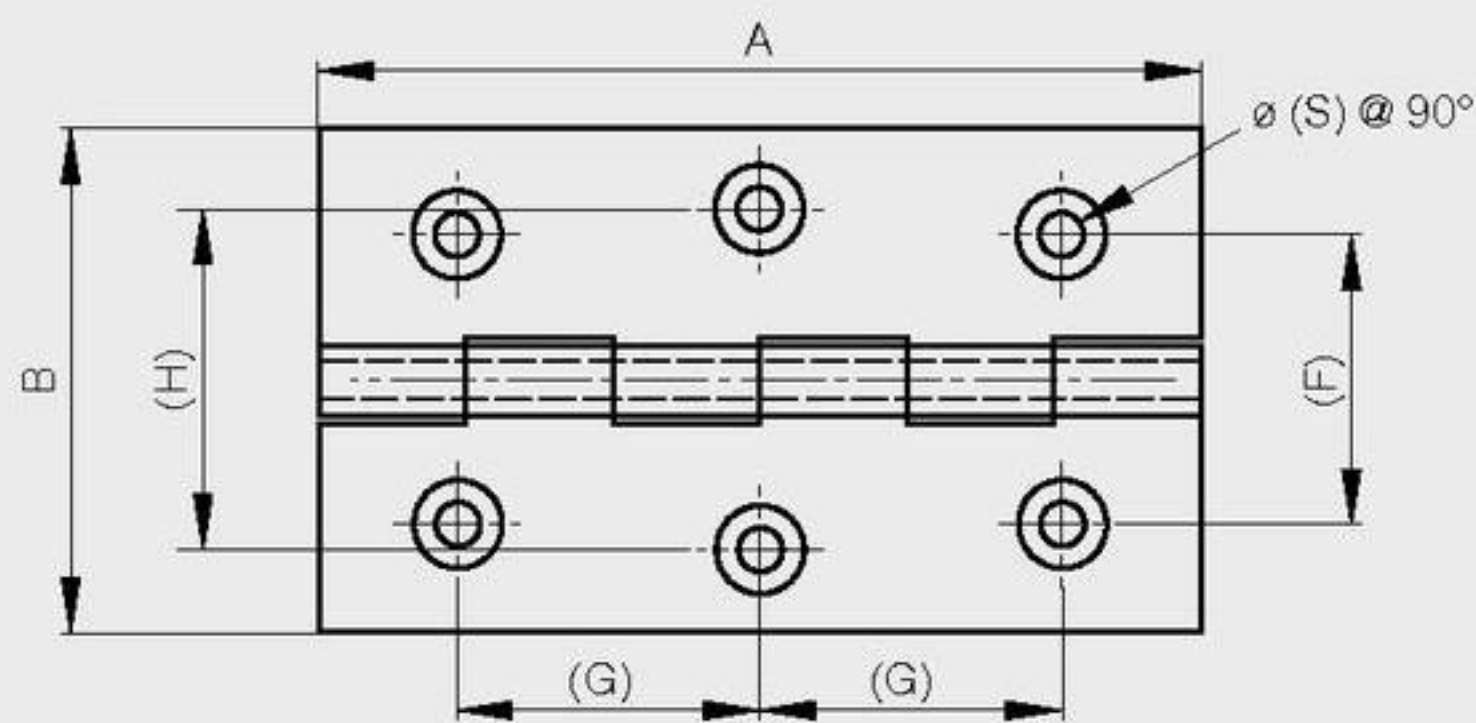


### Brass hinges - 6 holes

304 stainless steel pin  
 All hinges are drilled

A	B	C	D	E	F	G	H	S	part number	material	finish	weight
70	40	2	3	2.25	23	24	27	3.5	72-7-3668	brass	raw	52g
70	50	2.5	3.5	3.25	25	24	37	3.5	72-7-3669	brass	raw	79g
80	45	2.2	3	2.25	22.5	29	30.5	3.5	72-7-3670	brass	raw	72g
80	60	3	4	3.5	28	28.5	45	4	72-7-3671	brass	raw	125g



### Brass hinges - 8 holes

304 stainless steel pin  
 All hinges are drilled

A	B	C	D	E	F	G	H	S	part number	material	finish	weight
100	60	3	4	3.5	29.5	25	38	4	72-7-3674	brass	raw	155g
120	60	3	4	3.5	25	30	41.5	4	72-7-3675	brass	raw	188g

