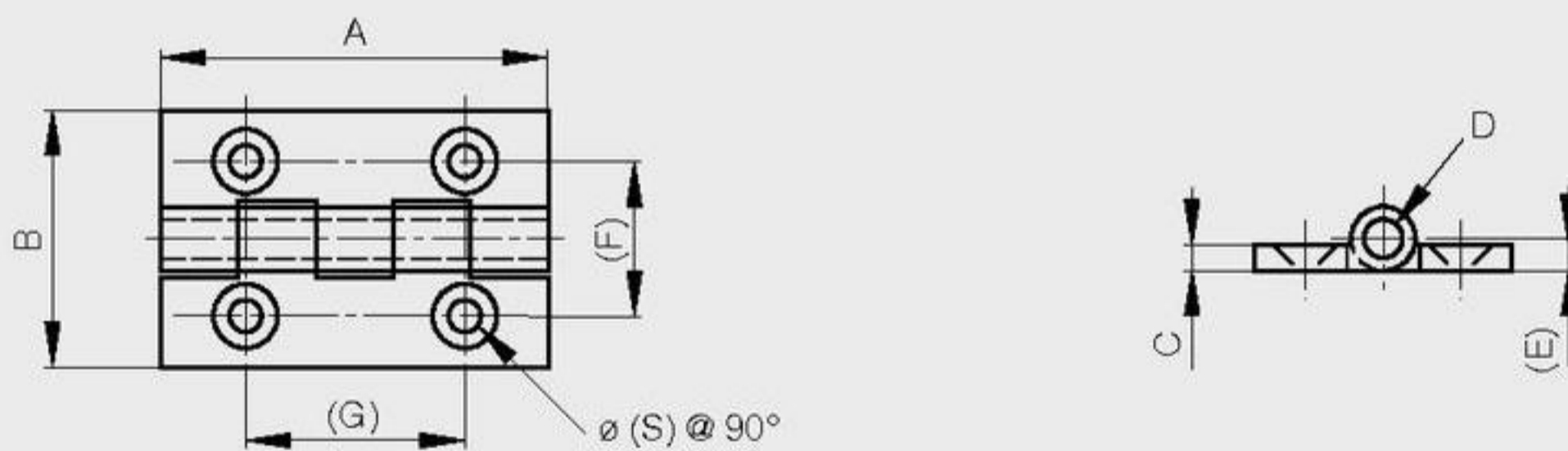


Brass hinges - 4 holes

304 stainless steel pin

A	B	C	D	E	F	G	S	note	part number	material	finish	weight
30	20	2	3	2.5	12.5	16.5	2.5	drilled	72-7-3659	brass	raw	11.6g
30	30	2	3	2.5	19	17	2.5	drilled	72-7-3660	brass	raw	15.8g
30	20	2	3	2.5				undrilled	72-7-3676	brass	raw	12g
30	30	2	3	2.5				undrilled	72-7-3677	brass	raw	17g



Brass hinges - 6 holes

304 stainless steel pin

All hinges are drilled

A	B	C	D	E	F	G	H	S	part number	material	finish	weight
40	25	2	3	2.5	15	14		3	72-7-3661	brass	raw	17.5g
40	30	2	3	2.5	18	14		3	72-7-3662	brass	raw	20.5g
40	35	2	3	2.5	21	14		3	72-7-3663	brass	raw	24g
40	40	2	3	2.5	23	14		3	72-7-3664	brass	raw	29g
50	30	2	3	2.5	17.5	17.5		3	72-7-3665	brass	raw	26g
60	35	2	3	2.5	20	21.5	24	3.5	72-7-3666	brass	raw	37g
60	40	2	3	2.25	21.5	21.5	26	3.5	72-7-3667	brass	raw	43.5g

