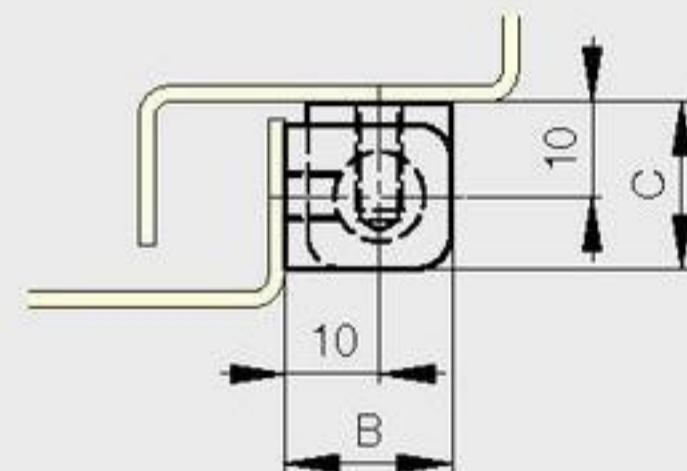
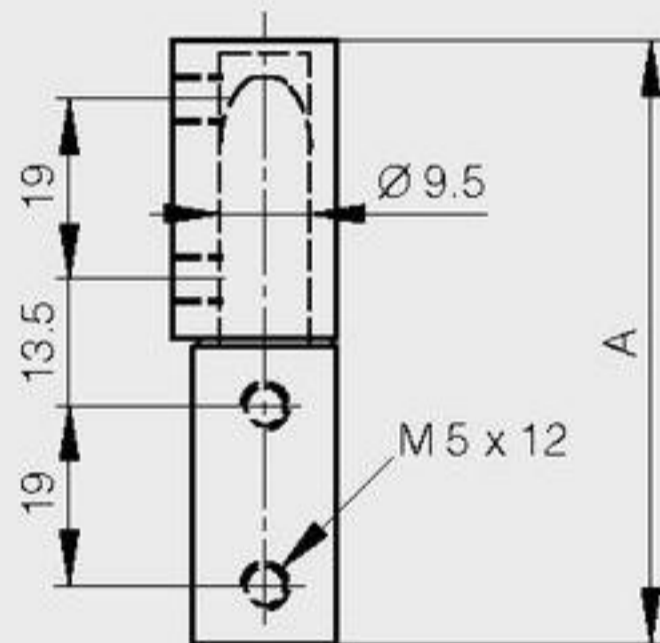


Zinc die-cast pin hinge

new!

Nylon washer

A	B	C	part number	material	finish	weight
64	17.5	17.5	72-1-9004	zinc die-cast	black	76g



Zinc die-cast lift-off hinges

new!

Fixing by 2 threaded studs

Stainless steel pin

A	B	C	D	G	note	part number	material	finish	weight
80	65	8	8	60	type 2 as shown below	14-7-3813	zinc die-cast	black	330g
80	65	8	8	60	type 1 symmetric not shown	14-7-3814	zinc die-cast	black	330g

