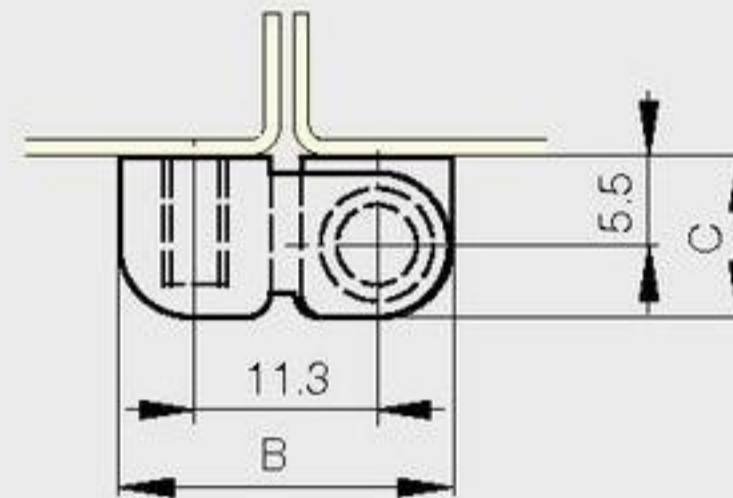
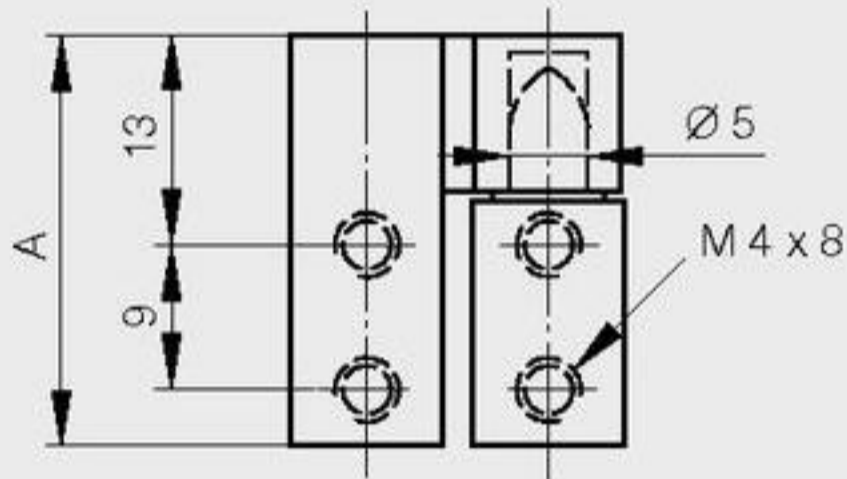


**Zinc die-cast lift-off hinges**

**new!**

Nylon washer

A	B	C	note	part number	material	finish	weight
25.5	20.5	10	type 2 as shown below	72-1-4206	zinc die-cast	black	30g
25.5	20.5	10	type 1 symmetric not shown	72-1-4207	zinc die-cast	black	30g



**new!**

Nylon washer

A	B	C	note	part number	material	finish	weight
64	33	17.5	type 2 as shown below	72-1-9000	zinc die-cast	black	140g
64	33	17.5	type 1 symmetric not shown	72-1-9001	zinc die-cast	black	140g

