

**Opening spring hinge 120mm long**

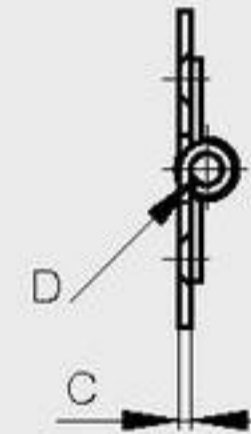
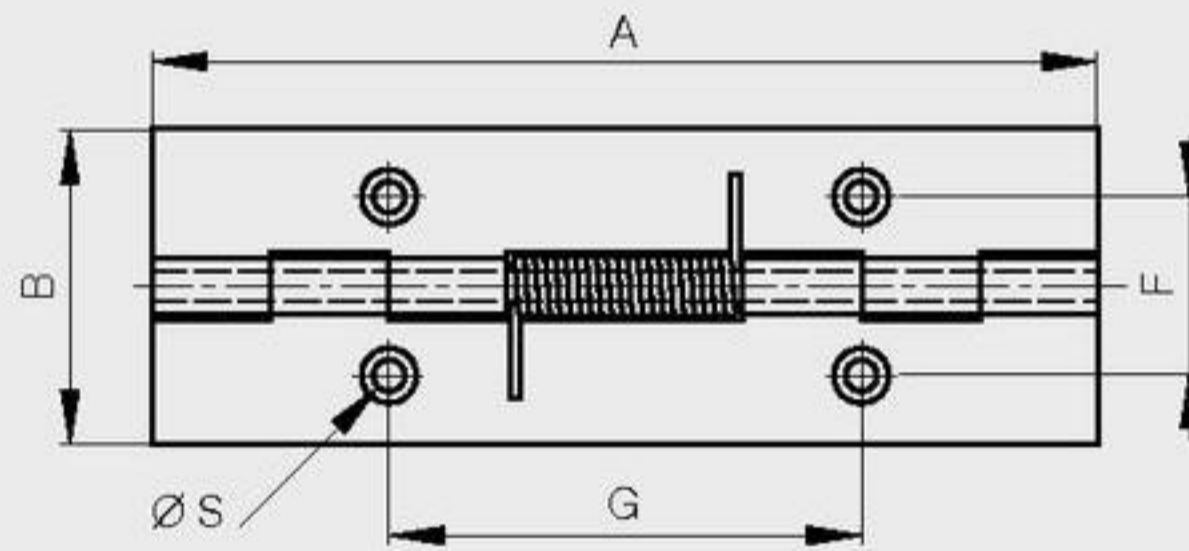
**new!**

Spring force in N.m :  
 M(0°) : 0,7 N.m / M(90°) : 0,45 N.m / M(180°) : 0,23 N.m

Stainless steel spring



A	B	C	D	F	G	S	note	part number	material	finish	weight
120	40	1.5	4				undrilled	71-1-3799	steel	zinc plated	82g
120	40	1.5	4	22.7	60	4	drilled	71-1-3805	steel	zinc plated	82g
120	40	1.5	4				undrilled	71-1-3787	stainless steel	raw	82g
120	40	1.5	4	22.7	60	4	drilled	71-1-3793	stainless steel	raw	82g



**Closing spring hinge 120mm long**

**new!**

Spring force in N.m :  
 M(0°) : 0,23 N.m / M(90°) : 0,45 N.m / M(180°) : 0,7 N.m

Stainless steel spring

A	B	C	D	F	G	S	note	part number	material	finish	weight
120	40	1.5	4				undrilled	71-1-3802	steel	zinc plated	82g
120	40	1.5	4	22.7	60	4	drilled	71-1-3808	steel	zinc plated	82g
120	40	1.5	4				undrilled	71-1-3790	stainless steel	raw	82g
120	40	1.5	4	22.7	60	4	drilled	71-1-3796	stainless steel	raw	82g

