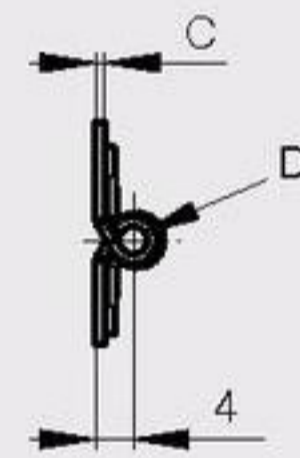
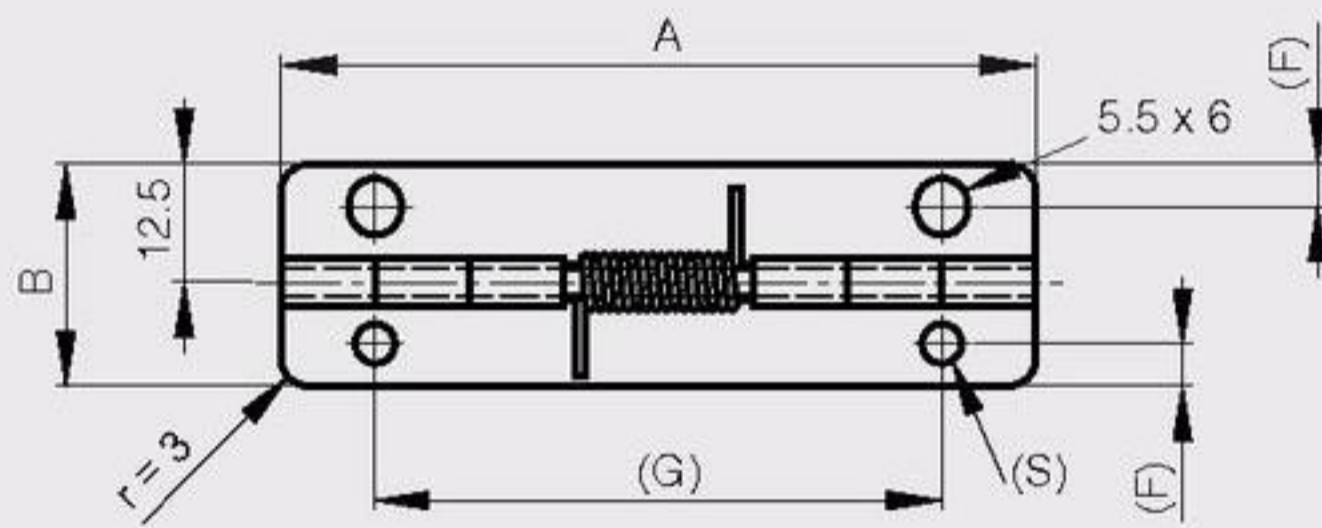


### Spring hinges

Spring force in N.m :

M(0°) : 0,17 N.m / M(90°) : 0,12 N.m / M(180°) : 0,065 N.m

A	B	C	D	F	G	S	note	part number	material	finish	weight
80	23.5	1	3	4.5	60	4	stainless steel opening spring	71-1-3304	430 stainless steel	raw	24.5g
80	23.5	1	3	4.5	60	4	stainless steel opening spring	71-1-3578	304 stainless steel	raw	24.5g



Spring force in N.m :

M(0°) : 0,12 N.m / M(90°) : 0,095 N.m / M(180°) : 0,07 N.m

A	B	C	D	note	part number	material	finish	weight
75	30	0.8	2	stainless steel opening spring	71-1-3309	steel	raw	17g
75	30	0.8	2	stainless steel opening spring	71-1-3583	304 stainless steel	raw	17g

