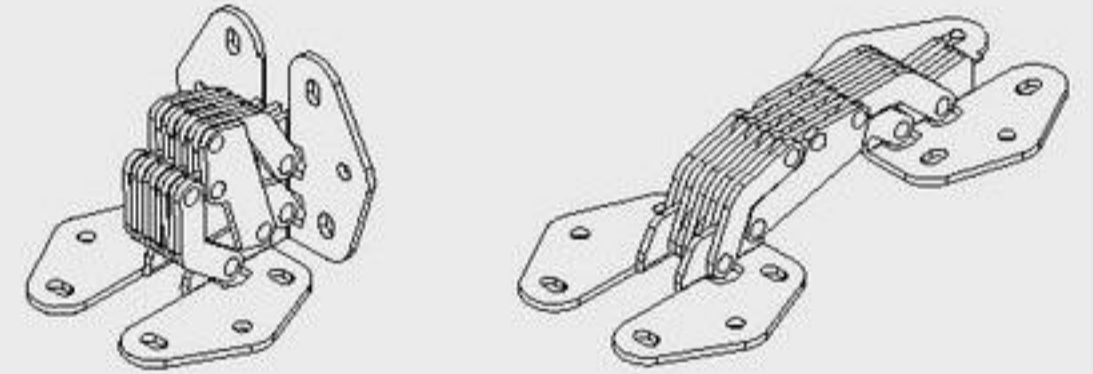
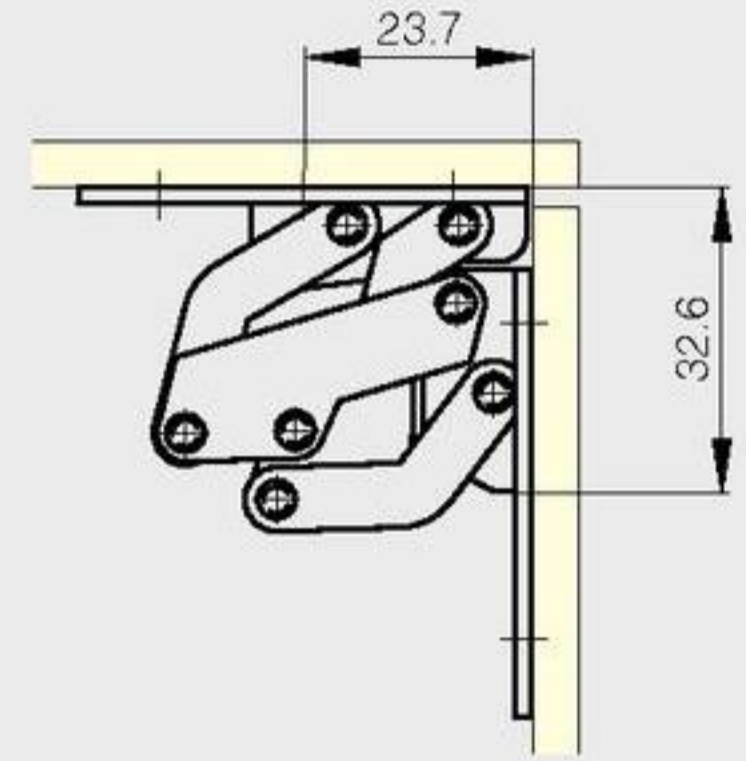
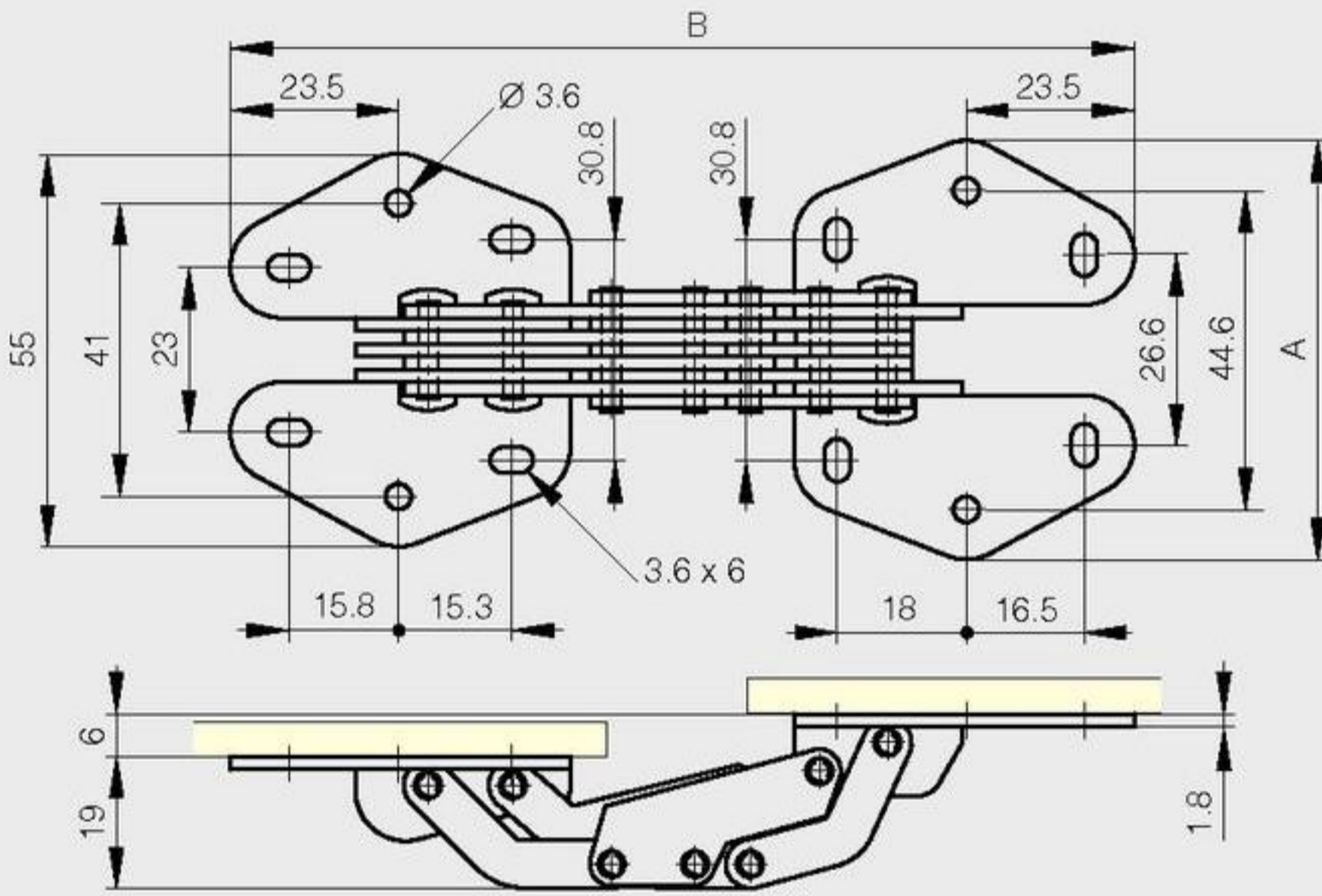
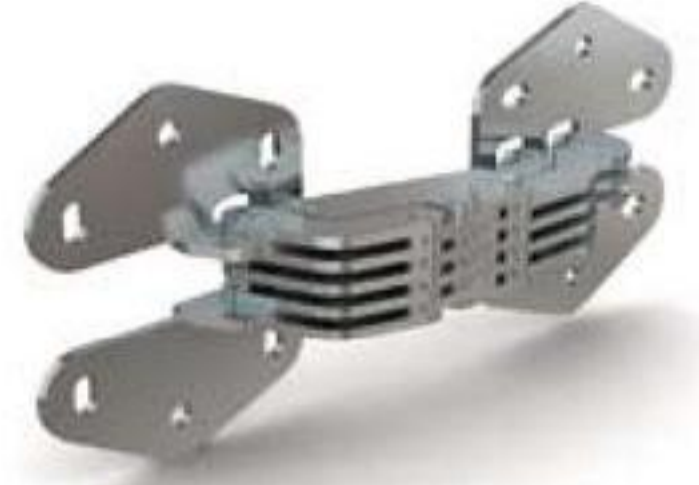


Concealed hinge 90° opening

A full product data sheet is available on our website.

A	B	part number	material	finish	weight
58.6	126.5	70-1-3303	steel	zinc plated	150g



Spring loaded concealed hinges 90° opening

A	B	C1	C2	D	E	F	G	H	J	S1	S2	part number	material	finish	weight
36	90	17	50	32.5	26.5	15.2	4.5	8.6	10.3	3	3x5	70-1-3551	steel	nickel plated	40g
42	106	23	57	38	32	18	5	8.7	10.8	3.9	3.9x6.4	70-1-3552	steel	nickel plated	60g

