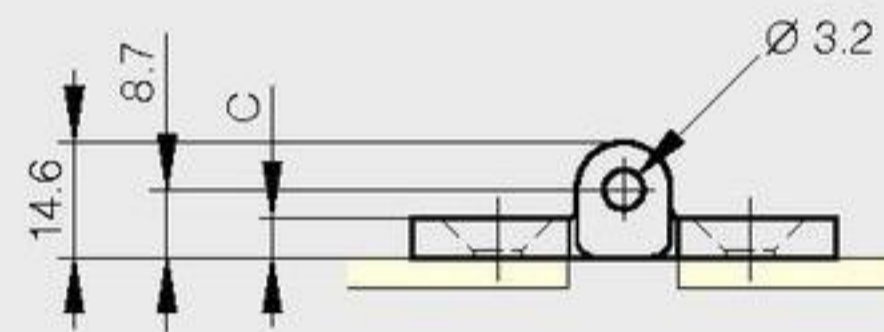
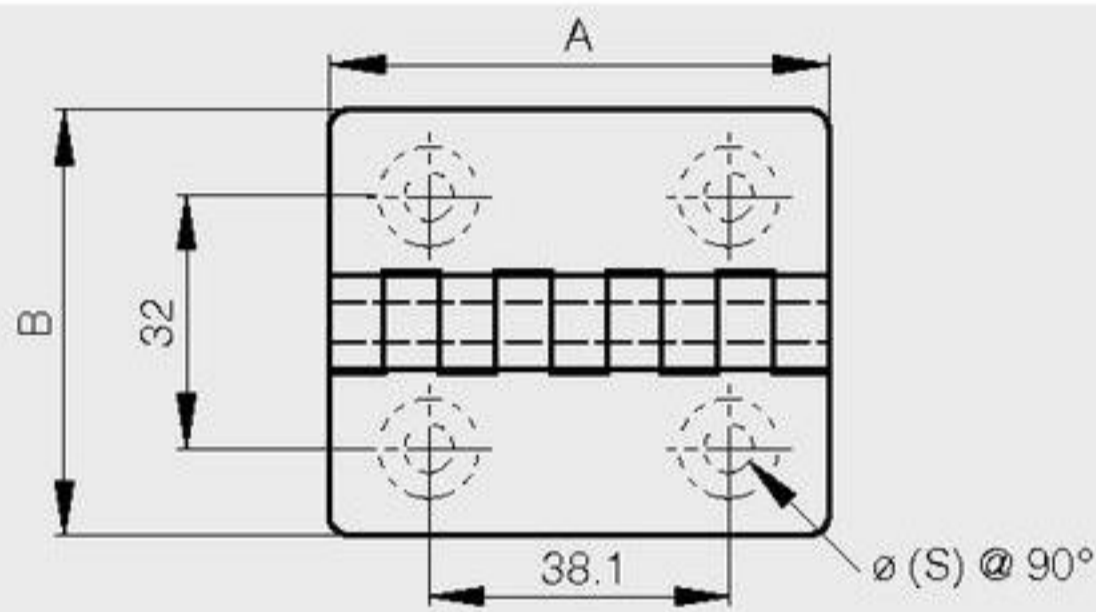


**Plastic hinges**

A	B	C	S	part number	material	finish	weight
63.5	54	5		54-7-3018	polypropylene	white	20g
63.5	54	5		54-7-3019	polypropylene	black	20g
63.5	54	5		54-7-3021	pvc	grey	20g
63.5	54	5		54-7-3022	polycarbonate	transparent	20g
63.5	54	5	6.2	54-7-3028	polyethylene	natural	20g



A	B	C	part number	material	finish	weight
63.5	54	5	54-7-3023	polypropylene	white	20g
63.5	54	5	54-7-3024	polypropylene	black	20g
63.5	54	5	54-7-3026	pvc	grey	20g
63.5	54	5	54-7-3027	polycarbonate	transparent	20g

