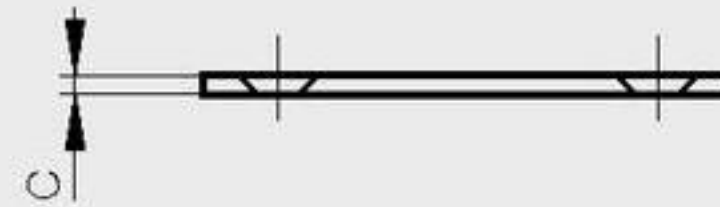
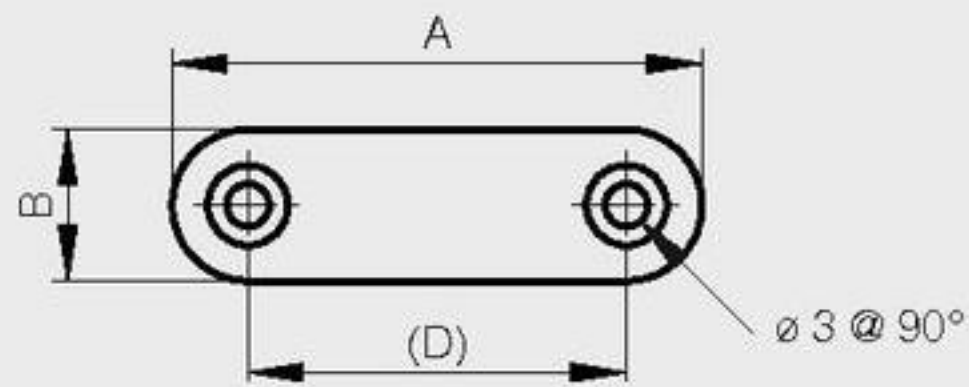


Counterplates for snap-in magnets

A	B	C	D	note	part number	material	finish	weight
41	14	1.5	31	for pt. nos. 16-7-4013 and 16-7-4014	16-7-3351	steel	zinc plated	6g
66	12	2	54	for pt. nos. 16-7-3674 and 16-7-4015	16-7-3673	steel	zinc plated	11g



Housing

Housing for part number 16-7-3674

A	B	C	D	part number	material	finish	weight
75.5	14.8	18.5	65	16-7-3675	plastic	black	8g

