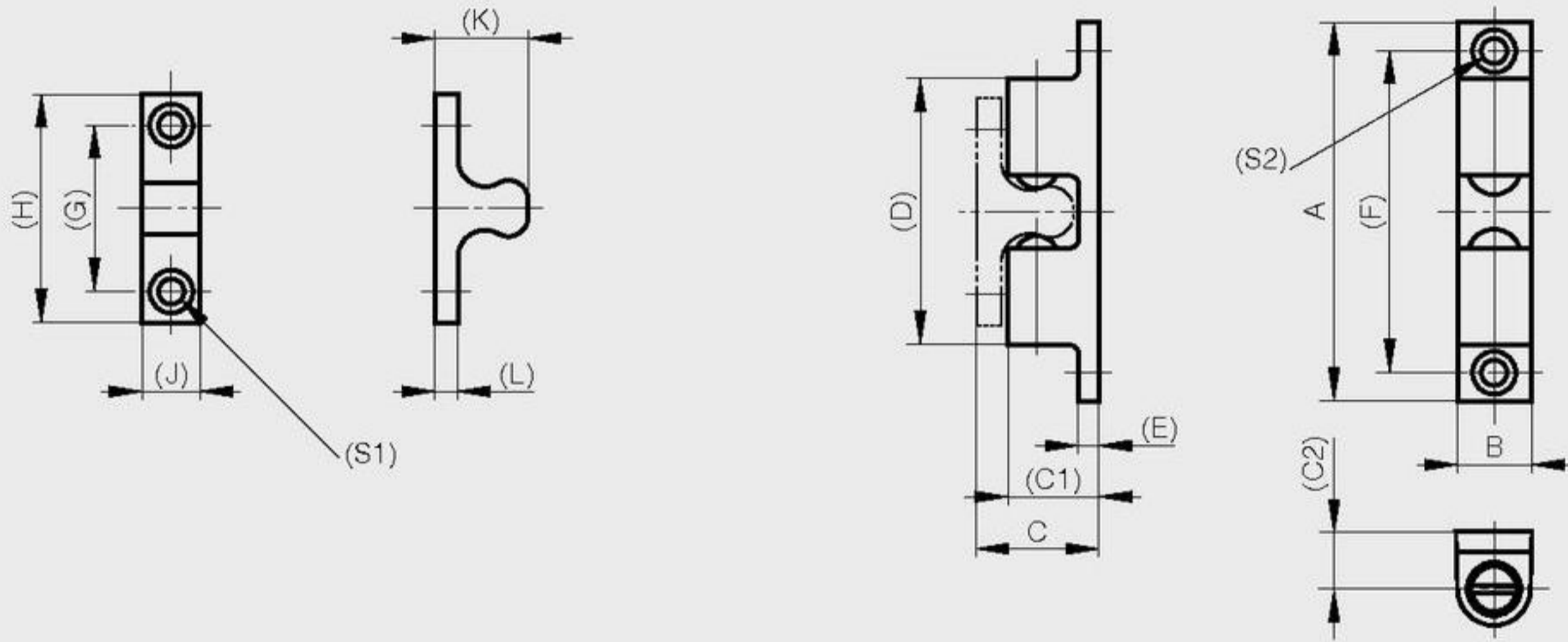


**Dual ball catches**

**new!**

A	B	C	C1	C2	D	E	F	G	H	J	K	L	S1	S2	force	part number	material	finish	weight
42.5	8	14	10	6.5	26.7	2.5	35	16	25	7.5	11.3	2.5	3.2	6.2	3kg	16-7-4211	zinc die-cast	chrome plated	16g
50	10	16	12.5	7.4	29.8	3	40	20	30	9	12.3	2.5	4.2	8.2	3.3kg	16-7-4212	zinc die-cast	chrome plated	26g
70	13.5	21.2	17	11	49	4	60	30	42	10.5	17.2	3	4.2	8.2	3.5kg	16-7-4213	zinc die-cast	chrome plated	70g



**Ball catches**

A	B	C	D	E	F	part number	material	finish	weight
8	7.4	4.5	6.5	9	16	16-7-3330	brass	raw	3.7g
10	8.5	6.5	8	11	16	16-7-3331	brass	raw	6.5g
12	9	7	10	13	19.5	16-7-3332	brass	raw	9.9g
13	10.5	7.2	10	14	19.5	16-7-3333	brass	raw	13.5g

