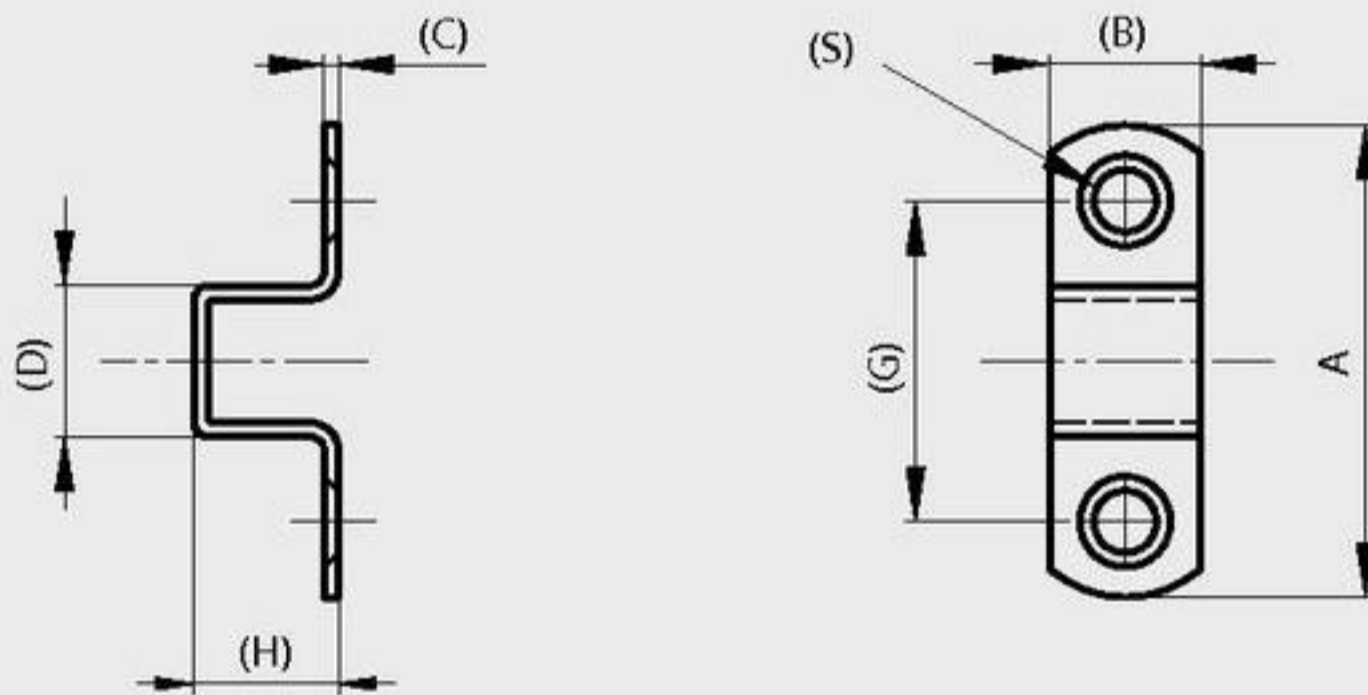


Strikes for latches with dimension A = 35, 50 and 70

A	B	C	D	G	H	S	part number	material	finish	weight
35	11	1.2	11.5	23	11.5	4.3	16-1-3633	steel	zinc plated	4.5g
35	11	1.2	11.5	23	11.5	4.3	16-1-3634	brass	chrome plated	5g
50	16	1.5	16	34	16	5.2	16-1-3636	steel	zinc plated	12g
50	16	1.5	16	34	16	5.2	16-1-3637	brass	chrome plated	13g
70	19	2	19	43.5	19	6.2	16-1-3639	steel	zinc plated	32g
70	19	2	19	43.5	19	6.2	16-1-3640	brass	chrome plated	33g



Latch

Stainless steel spring

A	B	H	S	part number	material	finish	weight
44	21	38	4.5	16-1-3266	steel	zinc plated	59g

