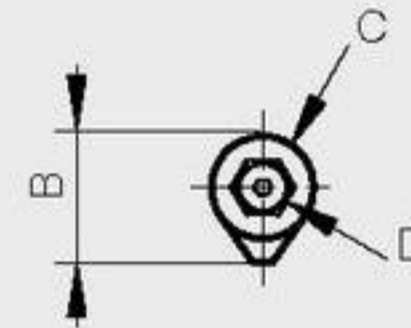
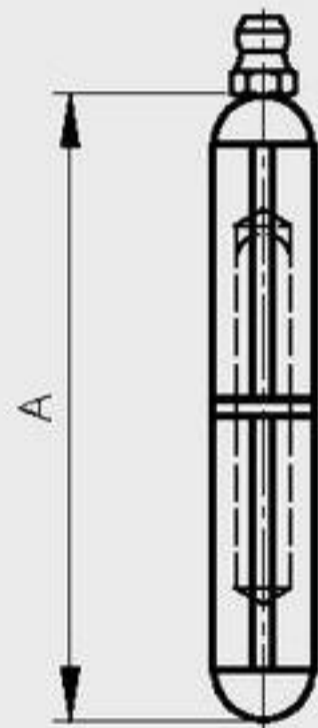


Round top weld-on steel hinges - steel pin - brass washer - with grease nipple

Fixed pin

A	B	C	D	part number	material	finish	weight
60	12	10	6	14-7-3796	steel	raw	36g
80	16	13	8	14-7-3786	steel	raw	84g
100	20	16	10	14-7-3787	steel	raw	160g
120	20	16	11	14-7-3788	steel	raw	195g
135	22.5	18	12	14-7-3793	steel	raw	270g
150	25.5	20	13	14-7-3789	steel	raw	390g
180	25.5	20	13	14-7-3790	steel	raw	465g
200	29	23	16	14-7-3791	steel	raw	660g



Round top weld-on aluminium hinges - stainless steel pin - stainless steel washer

A	B	C	D	part number	material	finish	weight
60	12	10	6	14-7-3815	alu	raw	20g
80	16	13	8	14-7-3816	alu	raw	40g
100	20	16	10	14-7-3817	alu	raw	75g
120	20	16	11	14-7-3818	alu	raw	93g

