

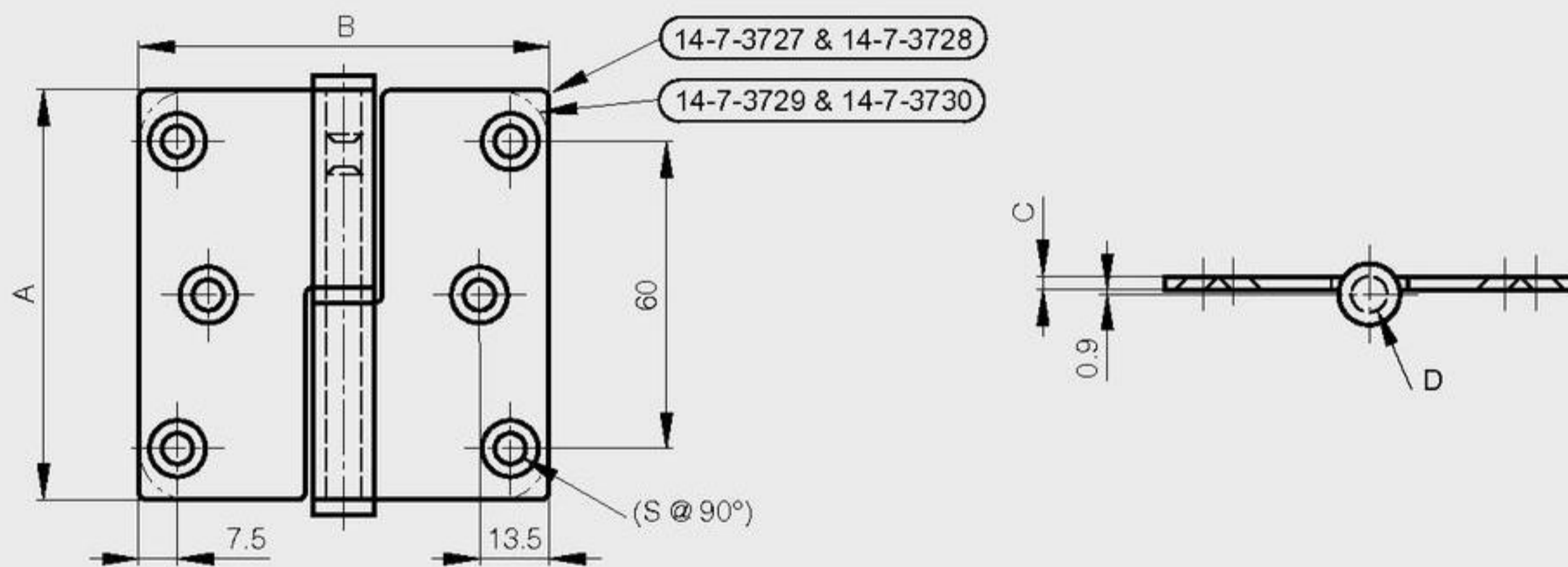
**Lift-off hinges 80 x 80 stainless steel with 6 holes**

2 shapes available :

- shape with square ends (14-7-3727 and 14-7-3728)
- shape with round ends (14-7-3729 and 14-7-3730)

Only the visible side has a brushed finish

A	B	C	D	S	note	part number	material	finish	weight
80	80	2.5	7	5.2	type 1 symmetric not shown / square corners	14-7-3727	304 stainless steel	brushed	175g
80	80	2.5	7	5.2	type 2 as shown below / square corners	14-7-3728	304 stainless steel	brushed	175g
80	80	2.5	7	5.2	type 1 symmetric not shown / round corners	14-7-3729	304 stainless steel	brushed	175g
80	80	2.5	7	5.2	type 2 as shown below / round corners	14-7-3730	304 stainless steel	brushed	175g



**Lift-off hinges 100 x 100 stainless steel 8 holes**

2 shapes available :

- shape with square ends (14-7-3675 and 14-7-3679)
- shape with round ends (14-7-3677 and 14-7-3681)

Only the visible side has a brushed finish

A	B	C	D	S	note	part number	material	finish	weight
100	82	2.5	7	4.7	type 1 symmetric not shown / square corners	14-7-3675	304 stainless steel	brushed	220g
100	82	2.5	7	4.7	type 1 symmetric not shown / round corners	14-7-3677	304 stainless steel	brushed	220g
100	82	2.5	7	4.7	type 2 as shown below / square corners	14-7-3679	304 stainless steel	brushed	220g
100	82	2.5	7	4.7	type 2 as shown below / round corners	14-7-3681	304 stainless steel	brushed	220g

