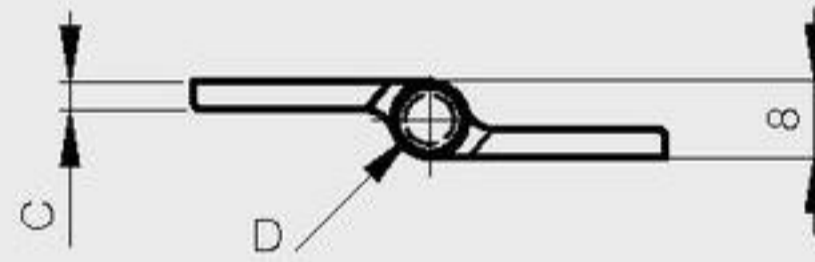
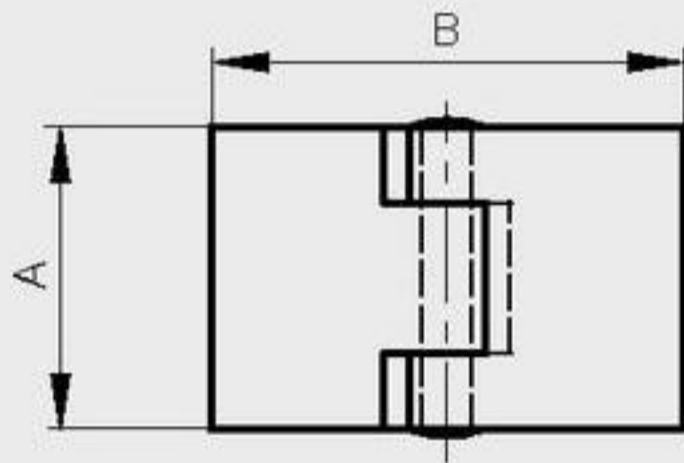


Aluminium hinges

Hinge with 304 stainless steel riveted pin

A	B	C	D	part number	material	finish	weight
32	50	3	5.2	72-1-3637	alu 6060 T5	raw	20g
50	50	3	5.2	72-1-3638	alu 6060 T5	raw	30g



Aluminium weld-on hinges 80 x 80mm

Zinc plated steel pin
 Nylon sleeve

A	B	C	D	S	note	part number	material	finish	weight
80	80	3.5	8	5.5	type 1 symmetric not shown	14-7-3624	alu	anodised silver	85g
80	80	3.5	8	5.5	type 2 as shown below	14-7-3625	alu	anodised silver	85g

