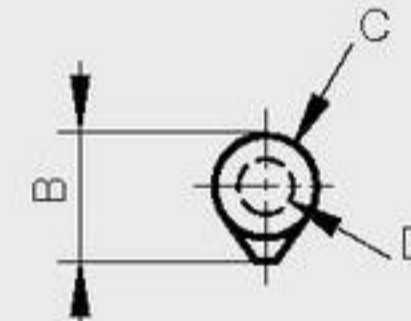
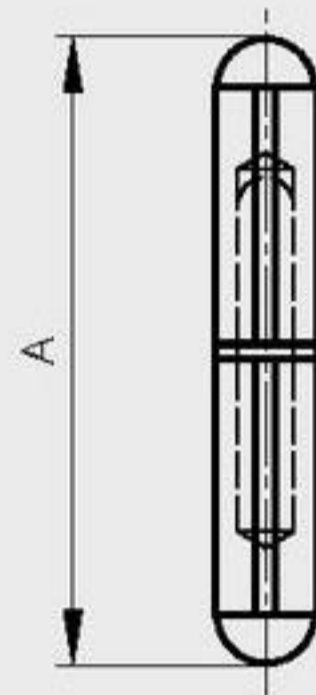


**Round top weld-on steel hinges - brass washer**

Fixed pin

A	B	C	D	material	finish	part number	pin material	weight
40	10	8	5	steel	raw	14-7-3585	steel	16g
60	12	10	6	steel	raw	14-7-3573	steel	36g
80	16	13	8	steel	raw	14-7-3574	steel	84g
100	20	16	10	steel	raw	14-7-3575	steel	160g
120	20	16	11	steel	raw	14-7-3586	steel	195g
135	22.5	18	12	steel	raw	14-7-3587	steel	270g
150	25.5	20	13	steel	raw	14-7-3576	steel	390g
180	25.5	20	13	steel	raw	14-7-3794	steel	465g
200	29	23	16	steel	raw	14-7-3588	steel	660g
40	10	8	5	steel	raw	14-7-3589	brass	16g
60	12	10	6	steel	raw	14-7-3590	brass	36g
80	16	13	8	steel	raw	14-7-3591	brass	84g
100	20	16	10	steel	raw	14-7-3592	brass	160g
120	20	16	11	steel	raw	14-7-3593	brass	195g
135	22.5	18	12	steel	raw	14-7-3594	brass	270g
150	25.5	20	13	steel	raw	14-7-3595	brass	390g
200	29	23	16	steel	raw	14-7-3596	brass	660g



**Round top weld-on steel hinges - steel pin - ball bearing**

Fixed pin

A	B	C	D	part number	material	finish	weight
104	20	16	10	14-7-3608	steel	raw	162g
124	20	16	11	14-7-3609	steel	raw	197g
141	22.5	18	12	14-7-3610	steel	raw	272g
155.5	25.5	20	13	14-7-3611	steel	raw	392g
206	29	23	16	14-7-3612	steel	raw	662g

