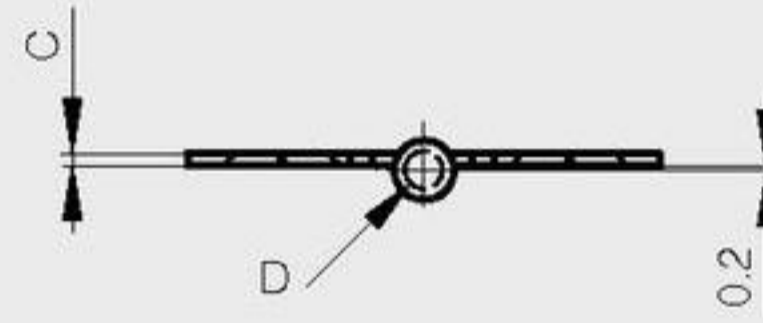
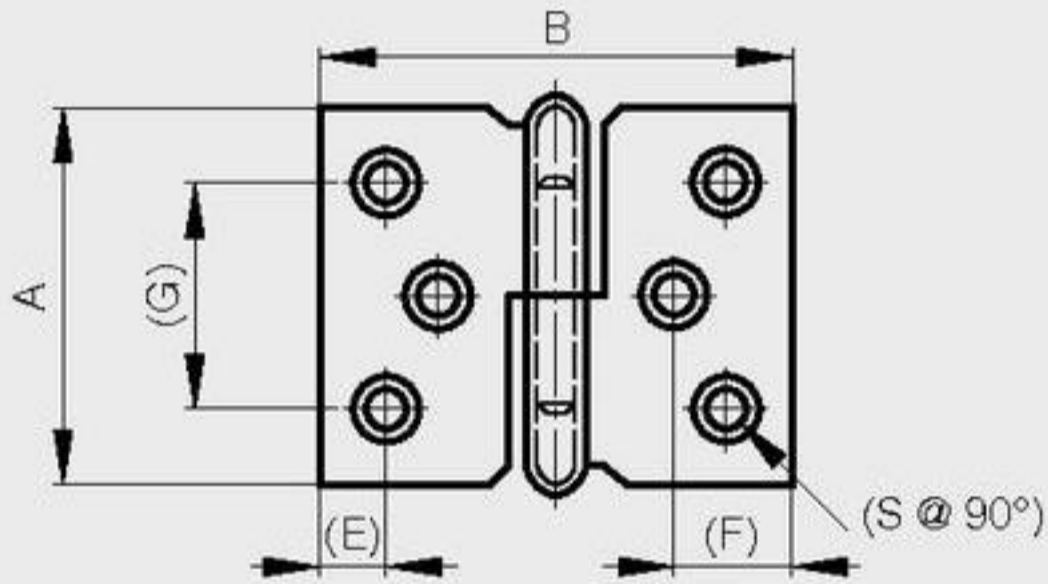


Lift-off hinges

A	B	C	D	E	F	G	S	note	part number	material	finish	weight
40	50	1.5	4	7.5	13	24	3	type 1 symmetric not shown	14-7-3392	steel	nickel plated	28g
40	50	1.5	4	7.5	13	24	3	type 2 as shown below	14-7-3393	steel	nickel plated	28g



A	B	C	D	E	F	G	S	note	part number	material	finish	weight
60	40	1.5	4	5.5	7	46	3	type 1 symmetric not shown	14-7-3396	steel	nickel plated	35g
60	40	1.5	4	5.5	7	46	3	type 2 as shown below	14-7-3397	steel	nickel plated	35g
70	45	1.5	4.5	5.7	7.5	54	4	type 1 symmetric not shown	14-7-3398	steel	nickel plated	46g
70	45	1.5	4.5	5.7	7.5	54	4	type 2 as shown below	14-7-3399	steel	nickel plated	46g
80	50	1.5	5	7.2	9.2	62	4	type 1 symmetric not shown	14-7-3400	steel	nickel plated	59g
80	50	1.5	5	7.2	9.2	62	4	type 2 as shown below	14-7-3401	steel	nickel plated	59g

