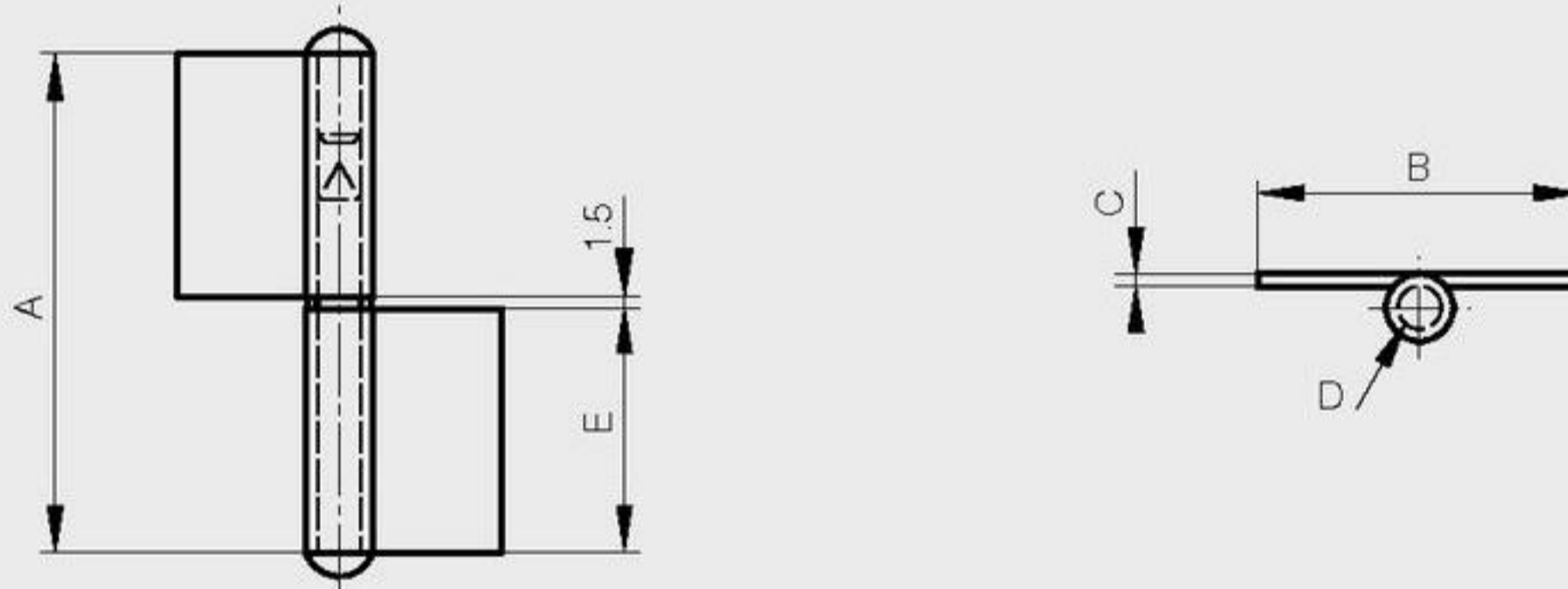


Flag hinge with washer

Flag hinge with brass washer, included separately

A	B	C	D	E	note	part number	material	finish	weight
61.5	40	1.5	5.3	30	type 2 as shown below	12-1-3311	steel	raw	40g
61.5	40	1.5	5.3	30	type 1 symmetric not shown	12-1-3312	steel	raw	40g
81.5	48	2	6	40	type 2 as shown below	12-1-3313	steel	raw	77g
81.5	48	2	6	40	type 1 symmetric not shown	12-1-3314	steel	raw	77g



Flag hinge without washer

A	B	C	D	E	note	part number	material	finish	weight
82	47	2	6	41	type 2 as shown below	12-1-3315	steel	raw	77g
82	47	2	6	41	type 1 symmetric not shown	12-1-3316	steel	raw	77g

