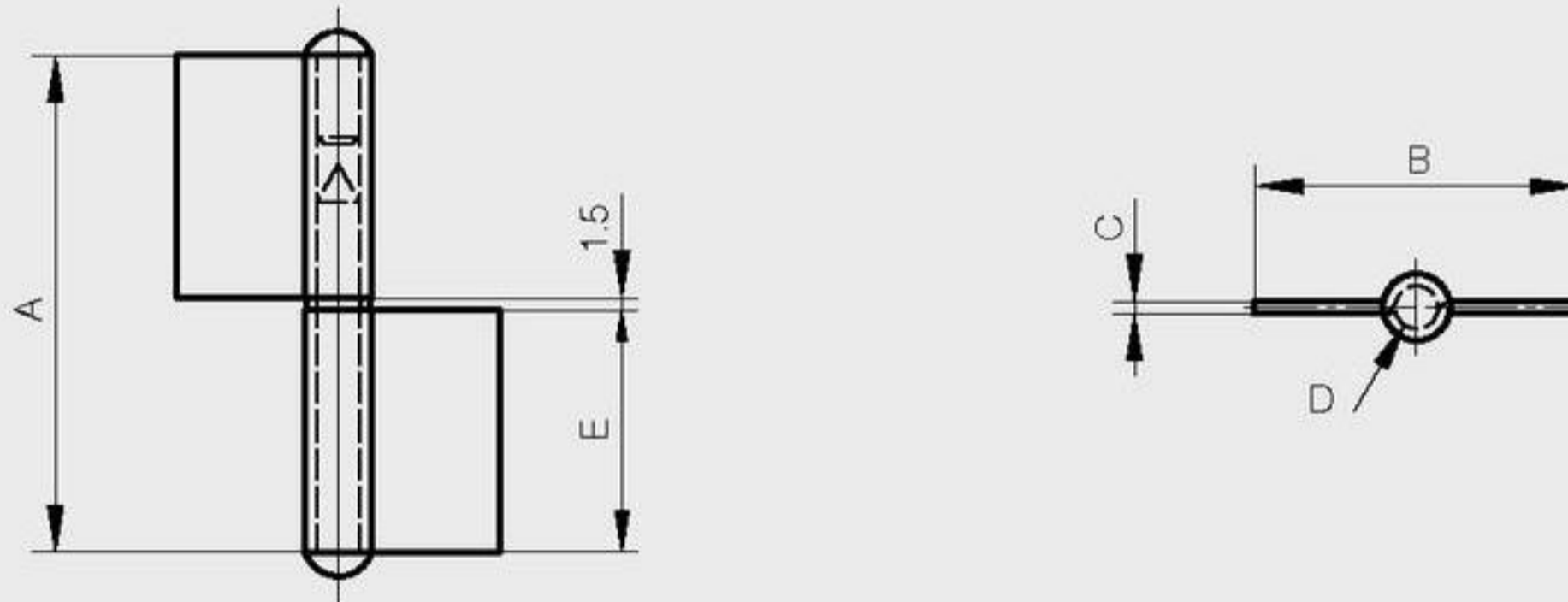


Flag hinge with washer

Flag hinge with brass washer, included separately

A	B	C	D	E	part number	material	finish	weight
61.5	40	1.5	5.3	30	12-1-3305	steel	raw	39g
81.5	50	2	6	40	12-1-3306	steel	raw	75g
61.5	40	1.5	5.3	30	12-1-3771	304 stainless steel	raw	39g
81.5	50	2	6	40	12-1-3772	304 stainless steel	raw	75g



Flag hinge without washer

A	B	C	D	E	note	part number	material	finish	weight
60	40	1.5	5.3	30	type 2 as shown below	12-1-3307	steel	raw	39g
60	40	1.5	5.3	30	type 1 symmetric not shown	12-1-3308	steel	raw	39g
80	48	2	6	40	type 2 as shown below	12-1-3309	steel	raw	76g
80	48	2	6	40	type 1 symmetric not shown	12-1-3310	steel	raw	76g

