

## 4-703 Torque Hinge Pr01 270°

for nested door

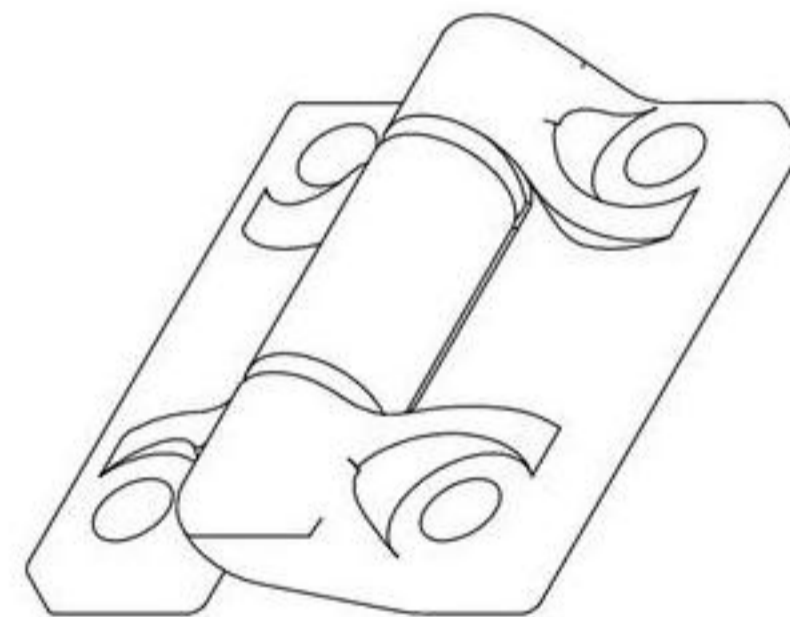
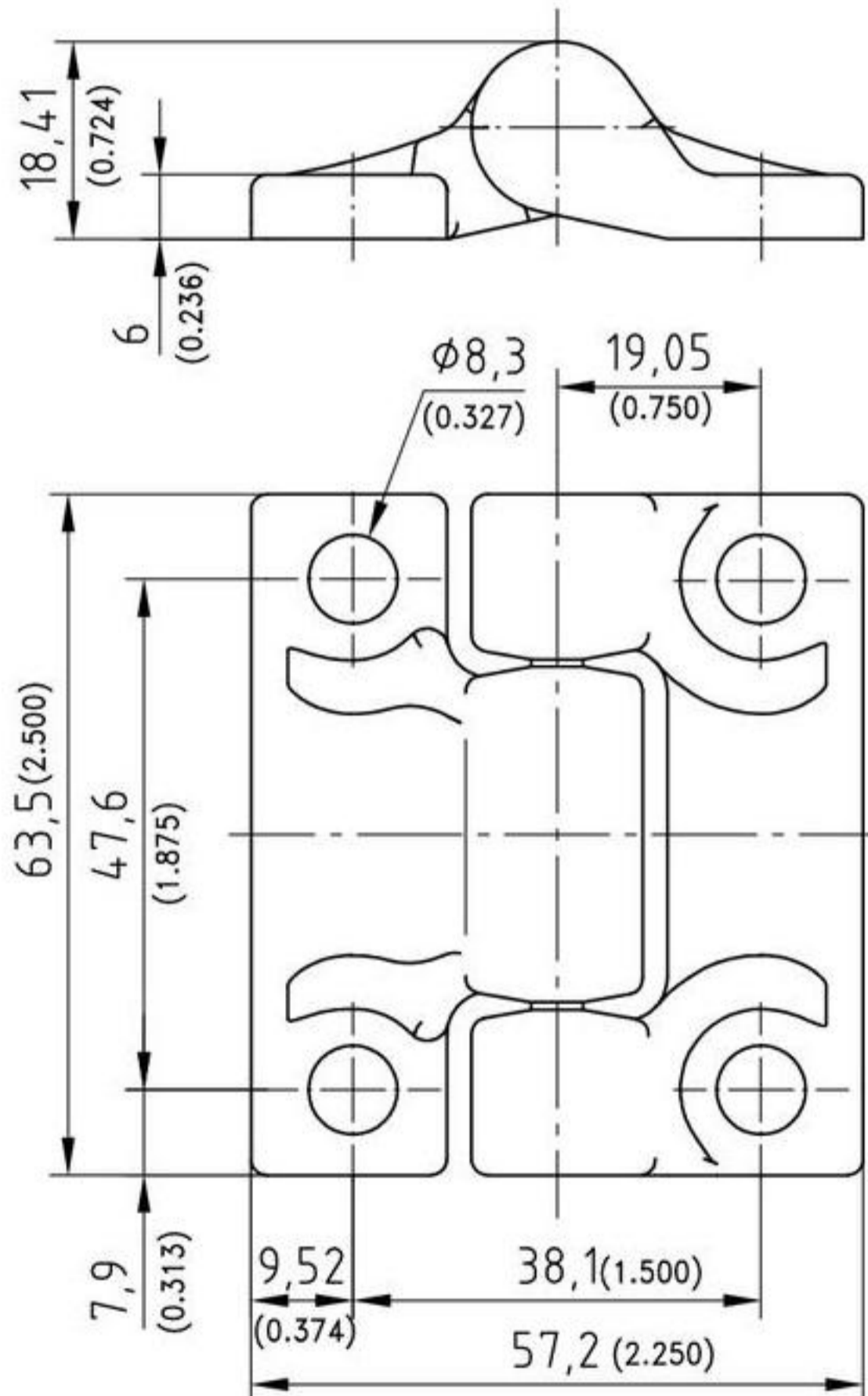


270° Hinge with constant torque throughout its full range of motion. The object (door, monitor) may be moved into any position and will remain.

- Without any engagement.
- Springback typically < 1°
- Constant torque throughout its fully range of motion
- Life of > 10.000 cycles
- RH and LH application.
- Applications: Office Equipment, Medical Devices, Computer Peripherals, Flat Panel Monitors, Acces Panels, Industrial Enclosures, Equipment Guards.
- Fastening: for example with M8 screw DIN-EN-ISO 4762

**Material:**

- **Housing:** PA
- **Shaft and torque clips:** hardened steel



with **RELLTORQ** technology

Version	Nm	Part No.
Torque Hinge	1,38	703-9003.00-00140*
Torque Hinge	2,16	703-9003.00-00220*

Other Nm, surfaces and special solutions on request.

\* Price and delivery time on request