

## 4-182.07SL Hinge Pr05 SNAP-LINE 180°

Bending 25mm for surface mounted door, frame part: screw-on, door part with D-SNAP-technology



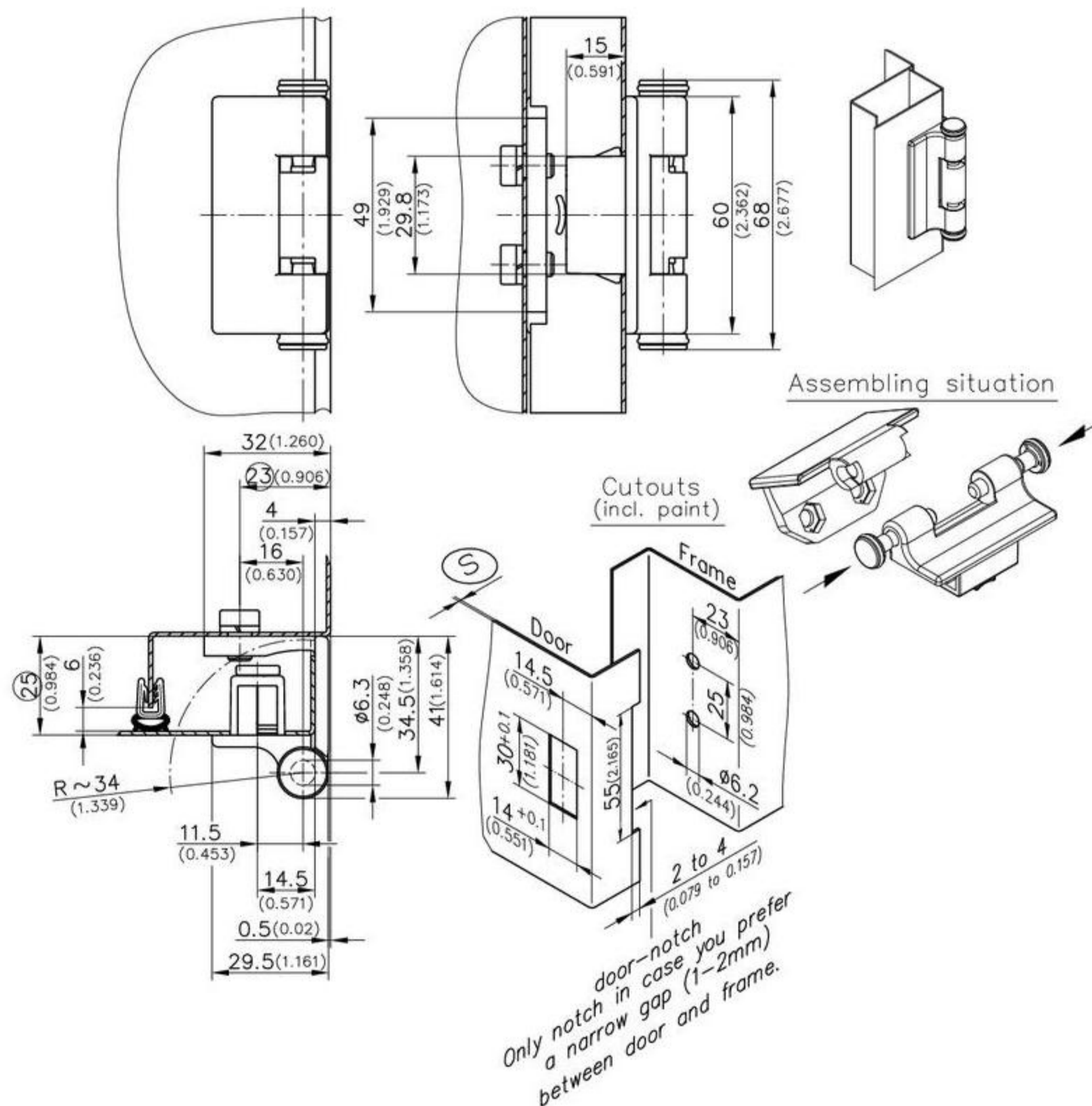
### 180° SNAP-LINE hinge.

- Door is lift-off.
- Frame-part screw-in, door part with D-SNAP technology.
- RH or LH application.
- The frame part can be fitted from outside and from inside.
- The installation of the door part, with already pre-fitted pin-halves, is achieved by a simple push into the appropriate cutout.
- To merge the door part and the frame part: at about 30° door opening, enter the door part into the matching openings in the frame part.

- Close the door and fully push the pin-halves towards each other.
- After retracting the pin-halves, the door can be pulled out horizontally at about 30° door opening.
- Special wire springs, fitted into the door part, make the pin-halves captive and the pin-halves have a detent in both positions.

### Material:

- **Frame part, door part and pin:** zinc die, black
- **Snap wedge:** sintered metal, plated
- **Detent spring:** spring steel



Hinge, snap-in	clamping range ©	Part No.	see page
	1,2 - 1,7	412-9006.00-00015	
	1,7 - 2,2	412-9006.00-00020	
	2,2 - 2,7	412-9006.00-00025	
	2,7 - 3,2	412-9006.00-00030	
	3,2 - 3,7	412-9006.00-00035	
Cover for cutout 30x14		292-0402.00-03014	01.106
Reinforcement plate for thin-walled sheets and for higher loads:		292-0701.15-01530	01.108
Tool for uninstallation		292-0306.80-02530	01.109
or		292-0301.15-00000	01.109