

## 4-182.03SL Hinge Pr05 SNAP-LINE 180°

Adjacent cabinets, door bending 25mm, surface mounted door, frame screw-on, door snap-in



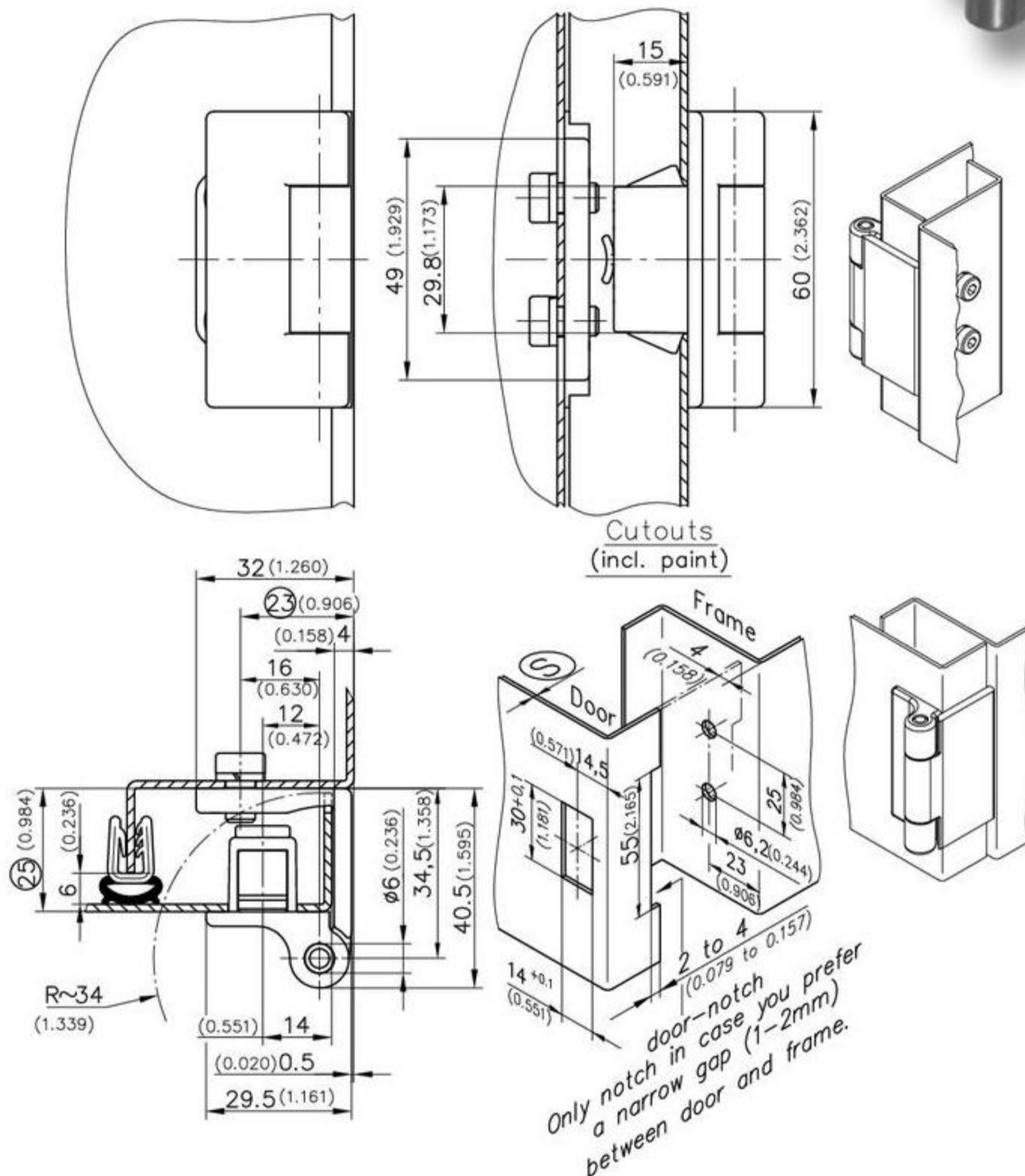
180° SNAP-LINE hinge.

- Frame-part screw-on.
- Door-part Snap-in.
- Dual hook with system dimension  $\textcircled{23}$  : see page 04.40 and 04.30.
- For uninstallation see page 01.79.

**Material:**

- **Frame part:**  
zinc die, black
- **door part:**  
zinc die, black
- **Snap wedges:**  
sintered metal, plated

- **Pin  $\text{\O}6\times60$ :**  
stainless steel
- **Washers:**  
brass, nickel plated
- **Socket cylinder screws:**  
steel, zinc plated
- **Nuts:**  
steel, zinc plated
- **Spring washers**  
steel, zinc plated



	clamping range $\textcircled{S}$ - Door	Part No.	see page
Frame part screw-on, door part snap-in.	1,2 - 1,7	412-9004.00-00015	
	1,7 - 2,2	412-9004.00-00020	
	2,2 - 2,7	412-9004.00-00025	
	2,7 - 3,2	412-9004.00-00030	
	3,2 - 3,7	412-9004.00-00035	
2 socket cylinder screws M6x10 DIN7984, 2 spring washers DIN7980 and 2 nuts M6 DIN 439 are included.			
Cover for cutout 30x14		292-0402.00-03014	01.106
Reinforcement plate for thin-walled sheets and for higher loads:		292-0701.15-01530	01.108
Tool for uninstallation		292-0306.80-02530	01.109
or		292-0301.15-00000	01.109