

1-035SL Captive SNAP-Joiner 9.5



Captive SNAP-Joiner with two installation systems.

- Leaf spring for pre-assembly into the front sheet.
- 2. D-SNAP technology for final assembly into the rear sheet.
- Joins doors, covers, rack drawers etc. with the frame/housing.
- The Captive SNAP-Joiner is captive in the front sheet.
- It is no longer possible to either loose, to drop or to mislay the Captive SNAP-Joiner.
- In case there are several Captive SNAP-Joiners, you can release them one after the other without them dropping out.
- Installation without use of tools.
- Completely pre-assembled, one-piece.
- Vibration-proof.

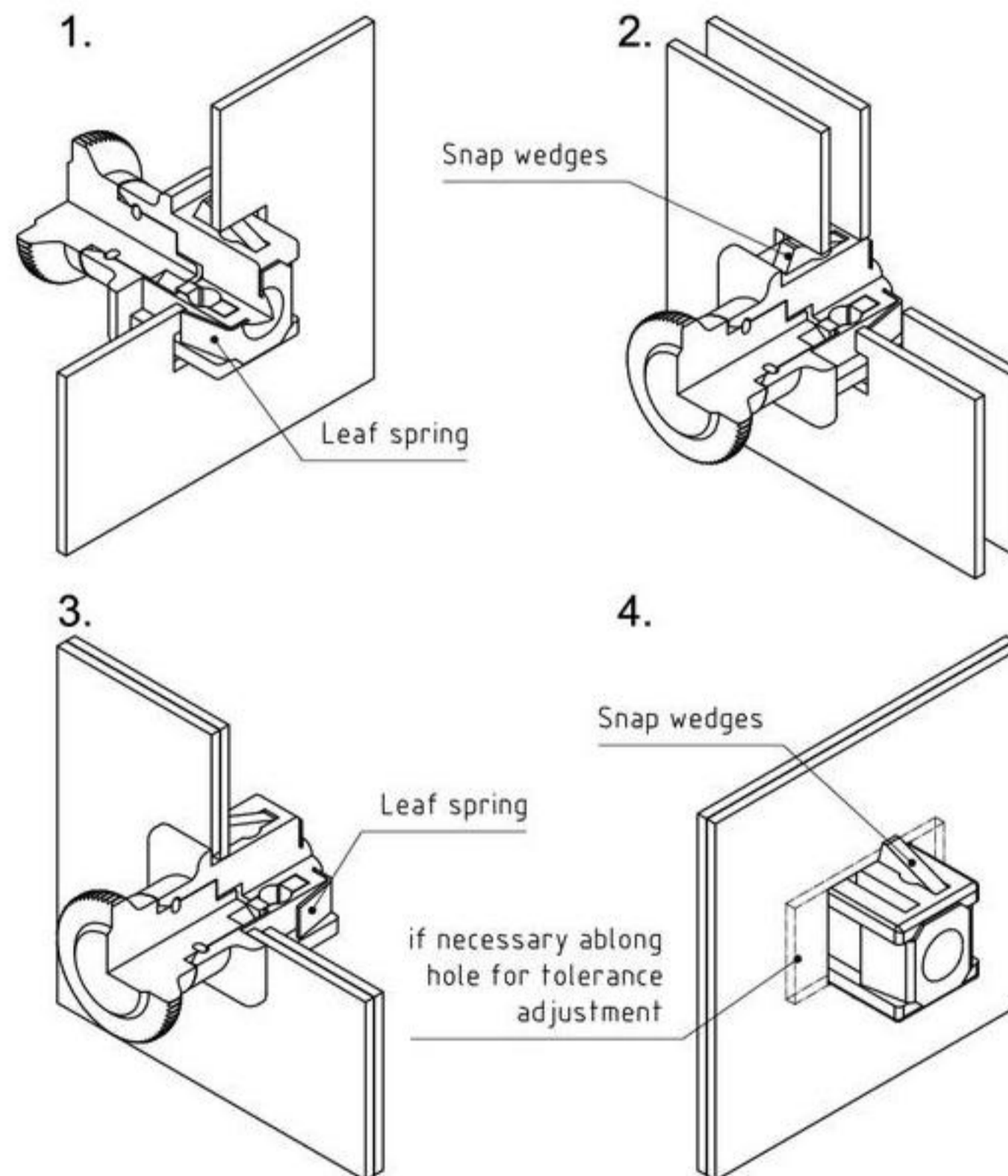
- Save of up to 90% assembly time.

- Two kinds of inserts are available:
 1. Turning Knob
 2. Slotted insert for screw-driver (1.2 x 5.5mm).

Material:

- **Housing:** zinc die, chrome plated or black coated
- **Insert:** steel, zinc plated
- **Leaf spring:** stainless steel
- **Snap wedges:** sintered steel

- **Attention: The insert supplied with the black housing is steel, zinc plated.**



Install:

Image 1: The Captive SNAP-Joiner is pushed into the front panel (e.g. 19" drawer, cover panel). The riveted leaf spring widens to prevent the Captive SNAP-Joiner from falling out of the panel. This keeps it secure and makes it captive. The cutout can be made larger to allow for tolerance adjustment.

Image 2: The Captive SNAP-Joiner, pre-assembled in the front panel, is inserted into the Cutout of the rear panel (Image 3) and kept in position by the D-SNAP wedges. This ensures alignment of the two panels.

Images 3 and 4: Full insertion of the Captive SNAP-Joiner into the second panel securely joins the two panels for a vibration-proof connection.

Disengage Panels:

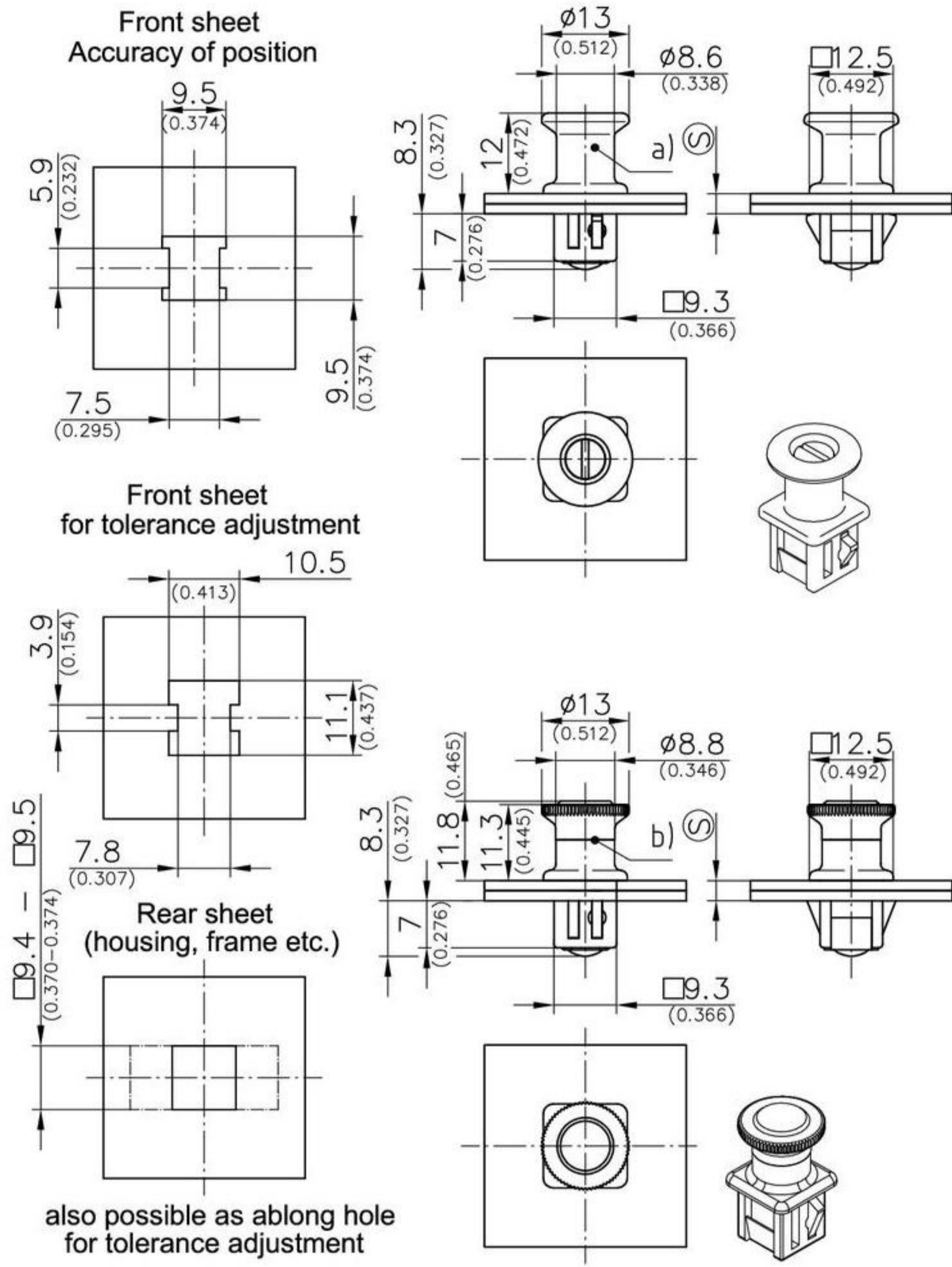
1. By turning the insert (Turning Knob or Screwdriver) the snap-wedges are pulled backwards and the front panel can be disengaged from the back panel.

2. The Captive SNAP-Joiner is held in position and remains held in the front panel by the leaf spring.

Applications which require more than one Captive SNAP-Joiner:

In applications using more than one Captive SNAP-Joiner, the Captive SNAP-Joiners can be pre-released, one-by-one, by turning the insert (Turning Knob or Screwdriver) and pulling the Captive SNAP-Joiner until the leaf spring touches the front panel. When all the Captive SNAP-Joiners have been pre-released, the front panel can be removed from the back panel. The Captive SNAP-Joiners stay assembled and held in the front panel by the leaf spring.

1-035SL Captive SNAP-Joiner 9.5



also possible as ablong hole for tolerance adjustment

a) Housing with Slotted insert			
	clamping range ©	matt chrome plated	black
	1,5 - 2,2	294-9202.00-00020	294-9203.00-00020
	2,3 - 2,8	294-9202.00-00025	294-9203.00-00025
	2,9 - 3,4	294-9202.00-00030	294-9203.00-00030
	3,5 - 4,0	294-9202.00-00038	294-9203.00-00038
	4,1 - 4,6	294-9202.00-00045	294-9203.00-00045
	4,7 - 5,2	294-9202.00-00050	294-9203.00-00050
b) Housing with Turning knob			
	clamping range ©	matt chrome plated	black
	1,5 - 2,2	294-9205.00-00020	294-9206.00-00020
	2,3 - 2,8	294-9205.00-00025	294-9206.00-00025
	2,9 - 3,4	294-9205.00-00030	294-9206.00-00030
	3,5 - 4,0	294-9205.00-00038	294-9206.00-00038
	4,1 - 4,6	294-9205.00-00045	294-9206.00-00045
	4,7 - 5,2	294-9205.00-00050	294-9206.00-00050