

## 1-085 Safety Quarter-Turn Pr20.1 L18

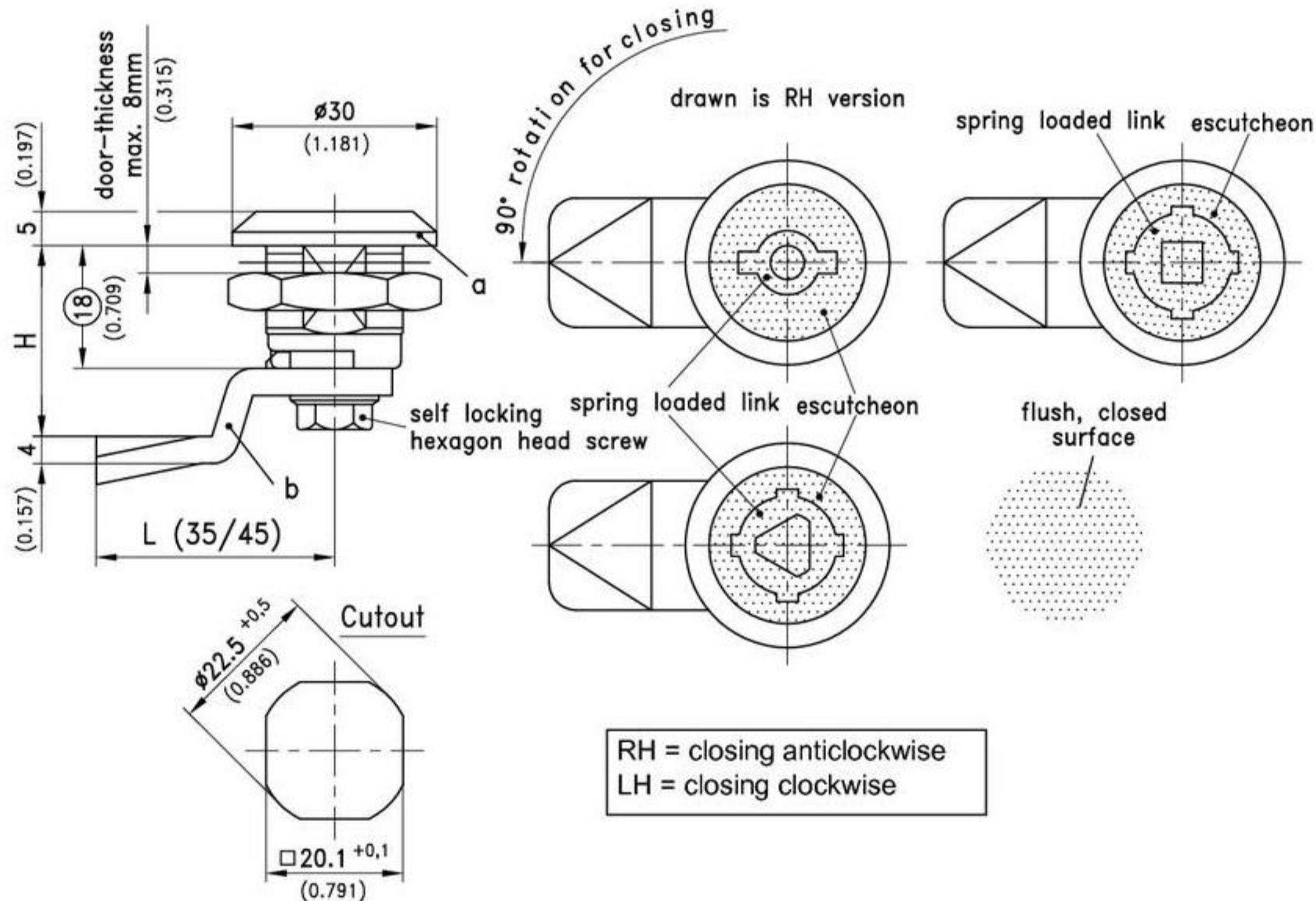


Safety Quarter-Turn, vibration-proof also at high sealing pressure.

- With the double bit versions the key is captive in the open position, according to DIN 43668.
- Water- and dust-tight according to IP65 DIN EN 60529.
- On request parts can be assembled by DIRAK.
- **An additional advantage:** completely closed housing surface
- **Note:** Also the black coated version always has the insert, escutcheon and link in chrome plating.

**Material:**

- a) **Housing:** zinc die, black or chrome plated
- Spring loaded link and Escutcheon:** zinc die, chrome plated
- Insert:** zinc die, chrome plated
- b) **Cam:** steel, zinc plated or b1)
- Cam:** PA, black



RH = closing anticlockwise  
LH = closing clockwise

a) Control Unit completely assembled and sealed (IP65), but without cam			see page
Insert		Housing, chrome plated	Housing black
Square 6	RH / LH	255-9801	255-9851
Square 7	RH / LH	255-9802	255-9852
Square 8	RH / LH	255-9803	255-9853
Triangular 6,5 CNOMO	RH / LH	255-9806	255-9856
Triangular 7	RH / LH	255-9804	255-9854
Triangular 8	RH / LH	255-9805	255-9855
Double bit 3 pin	RH*	255-9807	255-9857
Double bit 3 pin	LH	255-9808	255-9858
Double bit 5 pin	RH*	255-9809	255-9859
Double bit 5 pin	LH	255-9810	255-9860
Keys for inserts			09.8
b) Cam steel (zinc plated)			02.58
b1) Cam PA (black)			02.30
Special cams			02.61
Optional:			
c) Assembling without O-ring		200-0001	200-0001
Stainless steel version			10.9

\*as drawn

# 1-085SL Quarter-Turn Pr32x20 L18 SNAP-LINE

vibration-proof insert



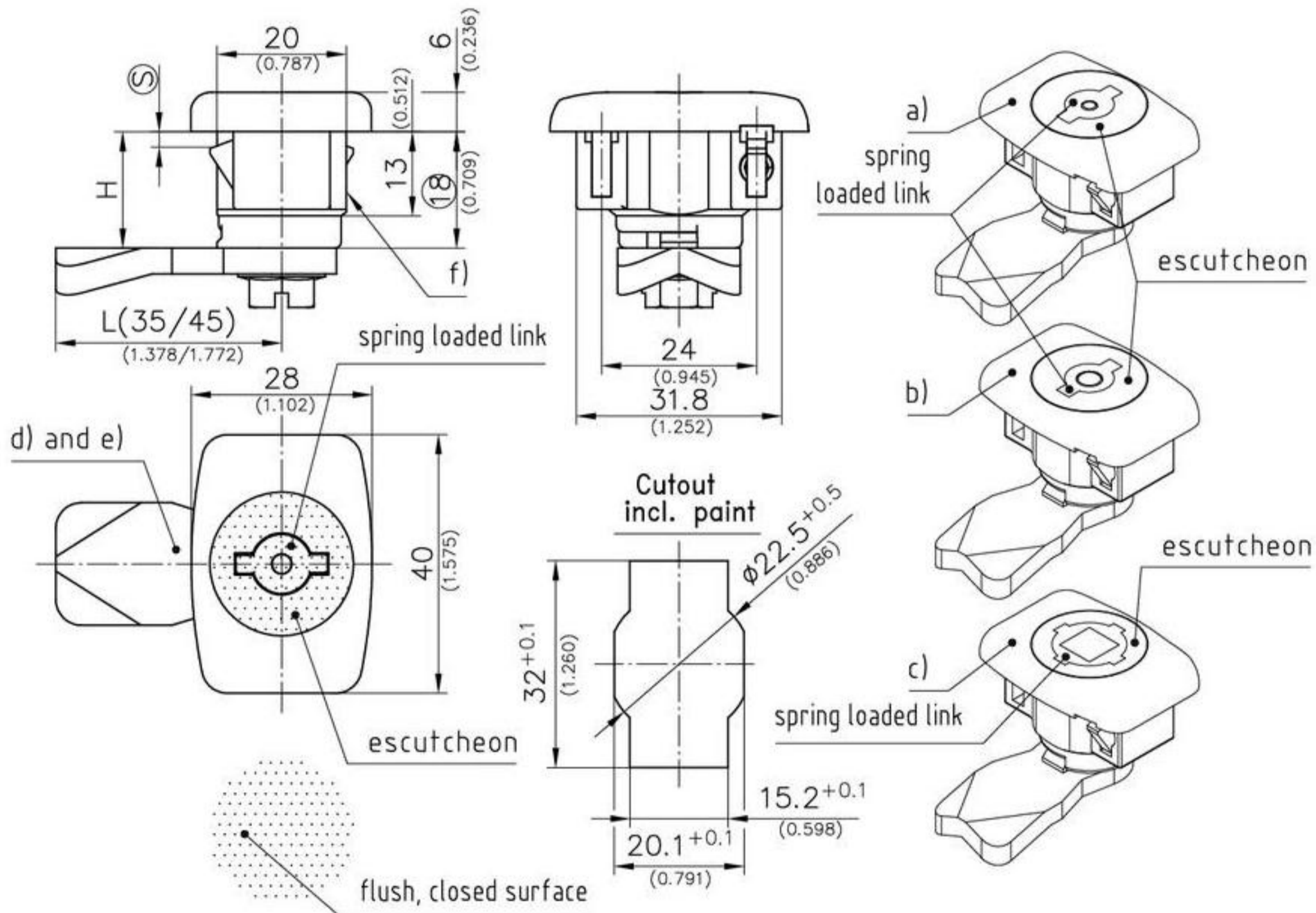
Elegant, low-profile Quarter-Turn vibration-proof also at high sealing pressure through an integrated latch.

- Especially narrow design, cutout 32x20,1mm.
- Not possible without an appropriate key.
- The key is captive in open position according to DIN 43668.
- Additional advantage: complete closed surface.
- Pre-assembled Quarter-Turn can easily be snapped-in.
- No tools needed.
- Vibration-proofed fixing.
- Blind installation.
- Rectangular cutout guarantees a perfect alignment.

- LH and RH application.
- On request parts can be assembled by DIRAK.
- Water- and dust-tight according to IP65 DIN EN 60529.
- Earthing/ Grounding see f).
- The pull-off force for double bit version is max. 300N.
- **Attention:** H-dimension of the cam  $\geq 12\text{mm}$  (0.472)!

**Material:**

- **Housing, insert, spring loaded link and escutcheon:** zinc die, chrome plated
- **Snap wedges:** sintered steel
- **O-Ring:** NBR, black
- **Serrated screw:** steel, zinc plated



	clamping range <sup>Ⓢ</sup>	Part No.	see page
a) Safety Quarter-Turn with insert double bit 3mm pin	1,0 - 1,7	455-9001.00-00013	
	1,5 - 2,2	455-9001.00-00018	
	2,3 - 3,0	455-9001.00-00026	
b) Safety Quarter-Turn with insert double bit 5mm pin	1,0 - 1,7	455-9002.00-00013	
	1,5 - 2,2	455-9002.00-00018	
	2,3 - 3,0	455-9002.00-00026	
c) Safety Quarter-Turn with insert square 8	1,0 - 1,7	455-9004.00-00013	
	1,5 - 2,2	455-9004.00-00018	
	2,3 - 3,0	455-9004.00-00026	
<b>Other <sup>Ⓢ</sup> - dimension on request!</b>			
d) Cam			02.30, 02.58, 10.10, 10.12, 02.61
e) 3-point cam			02.58, 03.38, 02.26
f) Grounding/Earthing clip:		200-1101.04-00000	
g) Please contact DIRAK for part no. of a completely pre-assembled SNAP-LINE Quarter-Turn.			