

4-123 Concealed Hinge Pr03 120°

Door Part Product system 4-124 and 4-125.

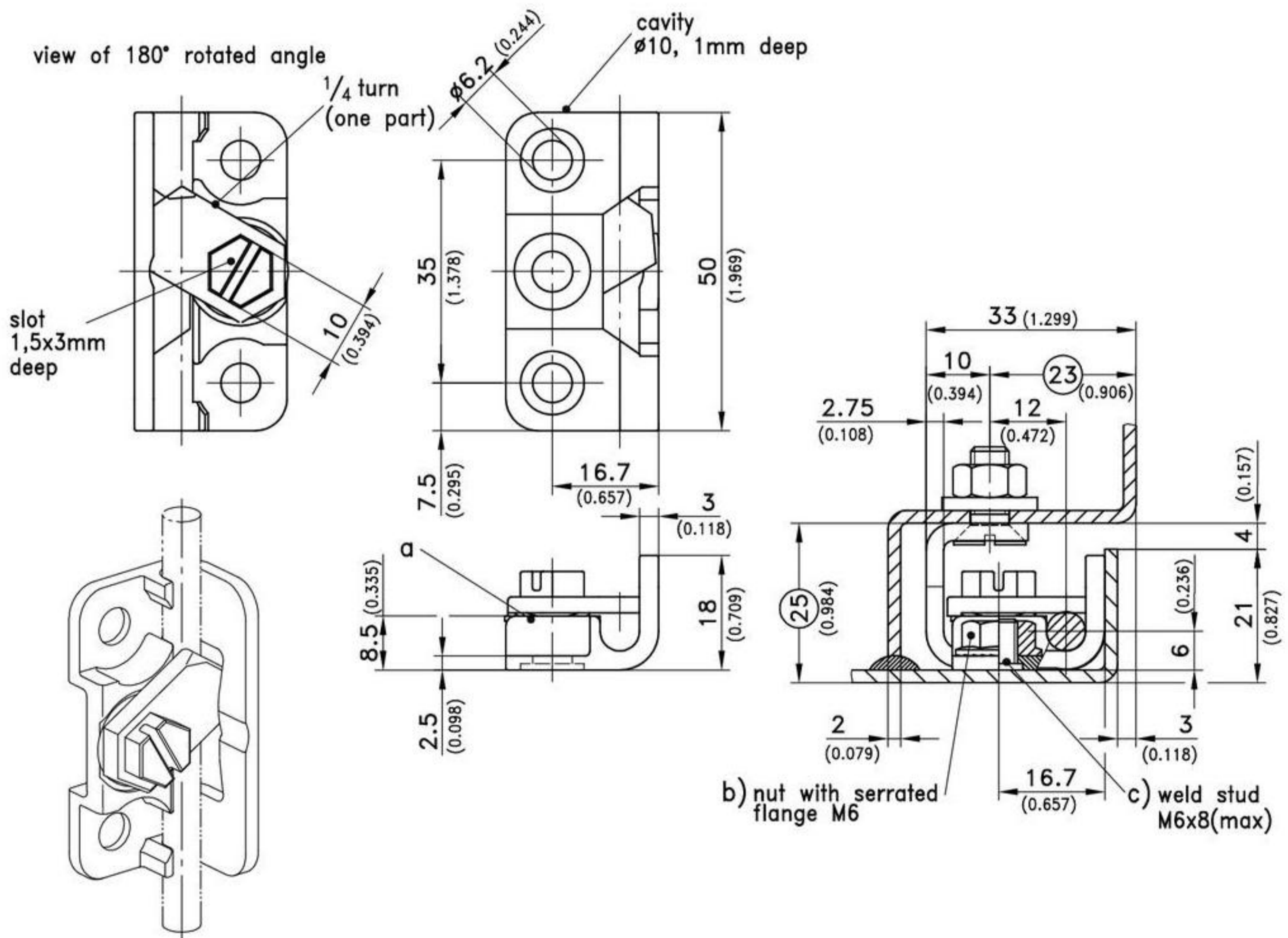
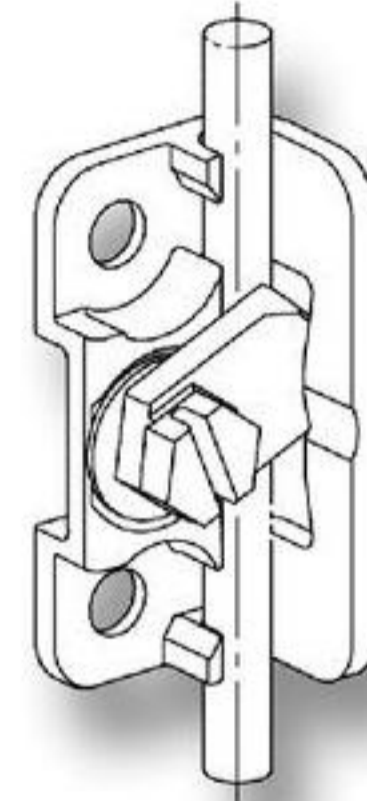


120° Concealed hinge

- RH or LH application.
- By rotating the 1/4 turn, the pivot pin is released and the door can be removed by pulling it to the front.

Material:

- a)
- **Door part and 1/4 turn:**
zinc die, zinc plated
 - **Washer and bowed washer:**
stainless steel
- b)
- **Nut with serrated flange:**
steel, zinc plated



Version	Part No.	see page
a) Screw-on unit	243-9008	
Please order separately:		
b) Nut with serrated flange M6 (2 pieces per screw-on unit)	860-B193.00-00006	
c) Weld stud M6x8 (2 pieces per screw-on unit)	800-1105	
Part No. of the complete hinge		06.57
This screw-on unit allows also an application with the stainless steel version		10.60
Countersunk machine screws and nuts		09.5