

1-415 Rod Latch

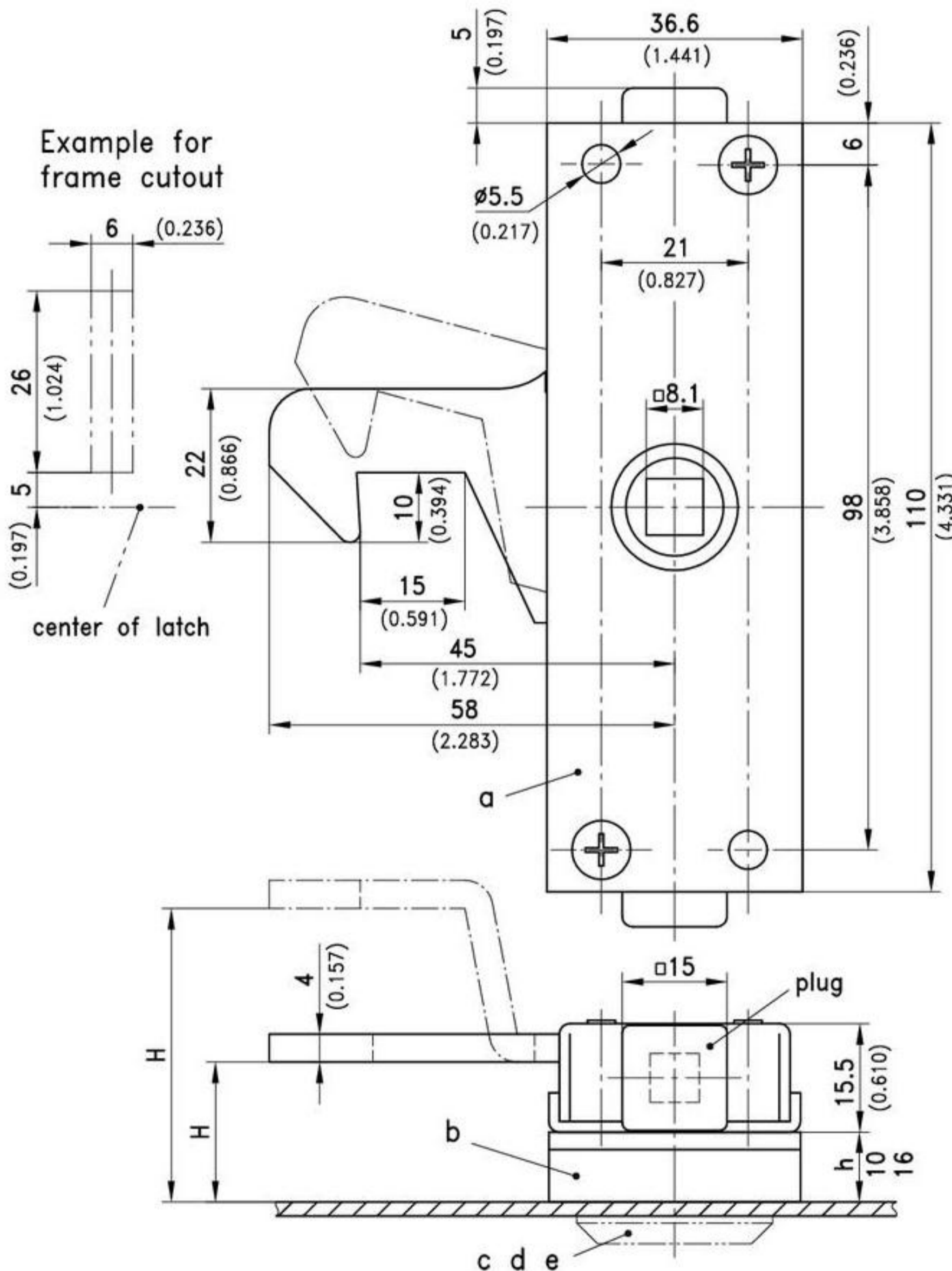
for sliding doors



Hooked cam latch for sliding doors.
• The cam has a slam feature.

Material:

- a)
 - **Latch:**
steel, zinc plated
 - **Cam:**
steel, zinc plated
 - **Plug:**
PE, black
- b)
- **Lock support:**
steel, zinc plated



a) Hooked Cam Latch		Hook straight	Hook curved	see page
RH		235-9015	235-9017	
LH		235-9016	235-9018	
b) Latch support	h in mm / inch	H in mm / inch		
	10 / 0.394	20 / 0.787	235-1001	-
	16 / 0.630	26 / 1.024	235-1002	-
	10 / 0.394	42 / 1.654	-	235-1001
	16 / 0.630	48 / 1.890	-	235-1002
c) Insert and escutcheon				02.64
d) T- and L-Handle				02.74
e) Swinghandle				03.21