

4-249.01SL Hinge Pr01 SNAP-LINE 180°

nested door

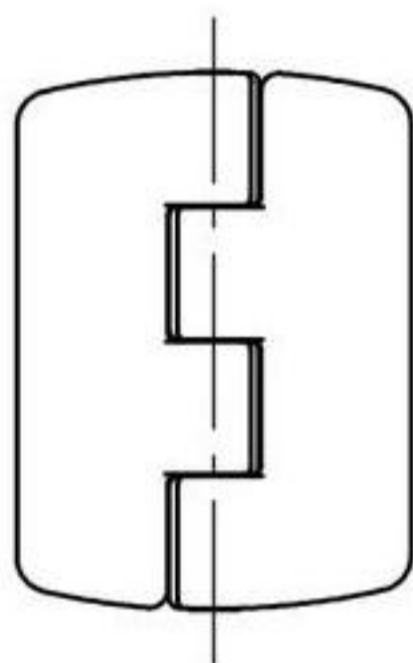
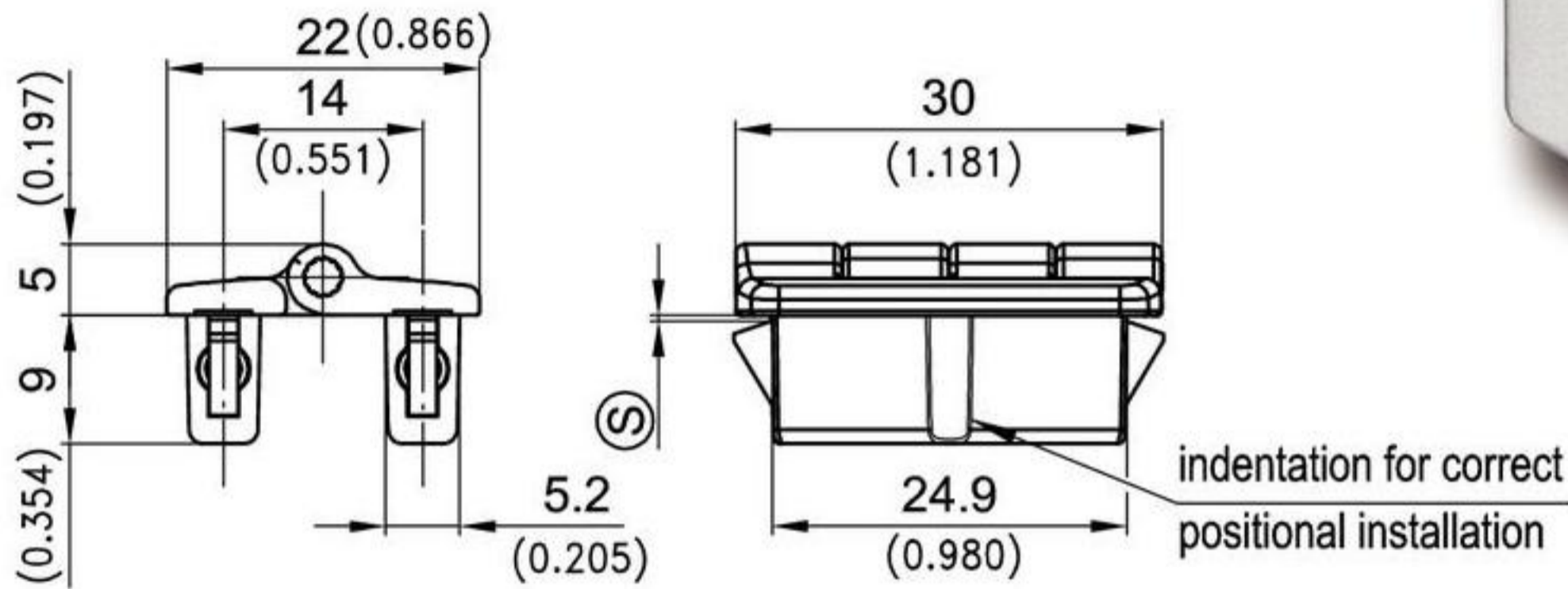


Small elegant hinge.

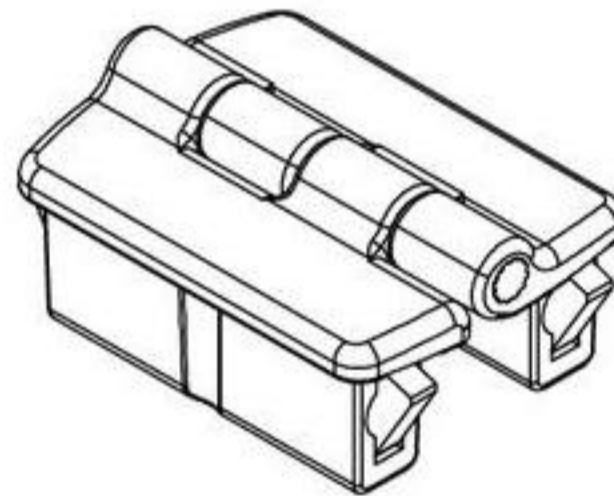
- 180° Opening.
- Installation by a simple push into the cutout.
- To guarantee a correct positional installation, the cutouts can have indentations.

Material:

- **Hinge Parts:**
zinc die, matt chrome plated, or zinc die, matt black.
- **Pin:**
stainless steel
- **Snap wedges:**
sintered steel

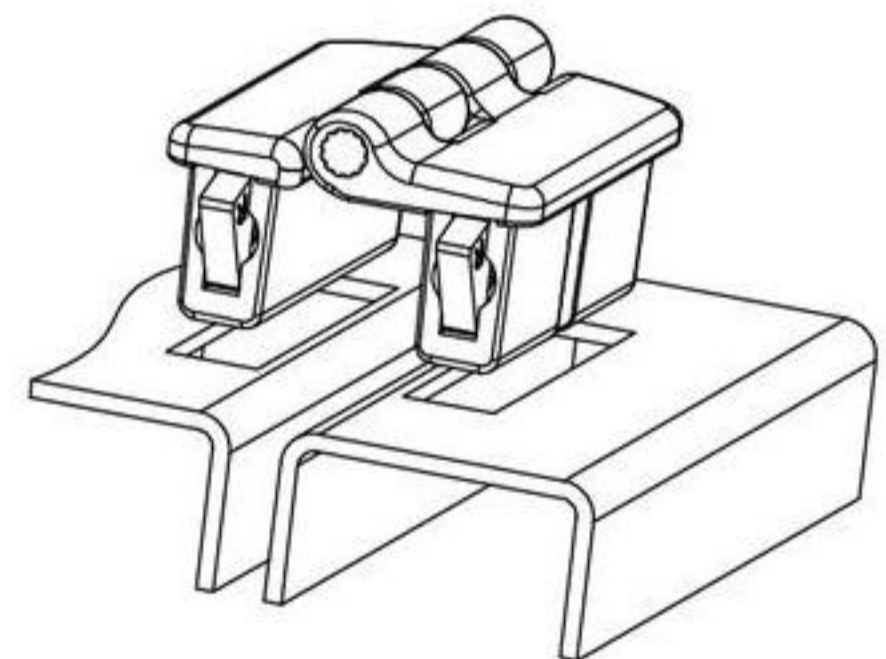
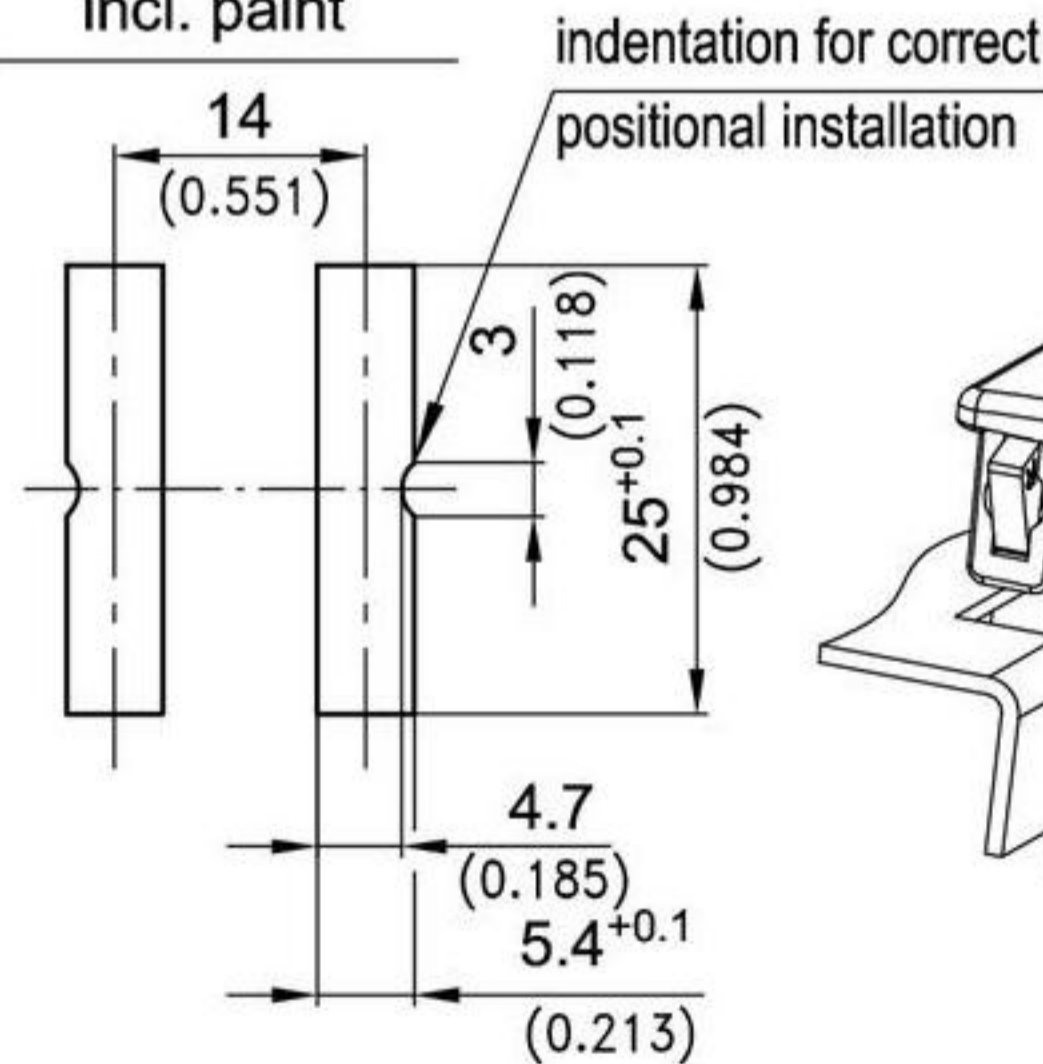
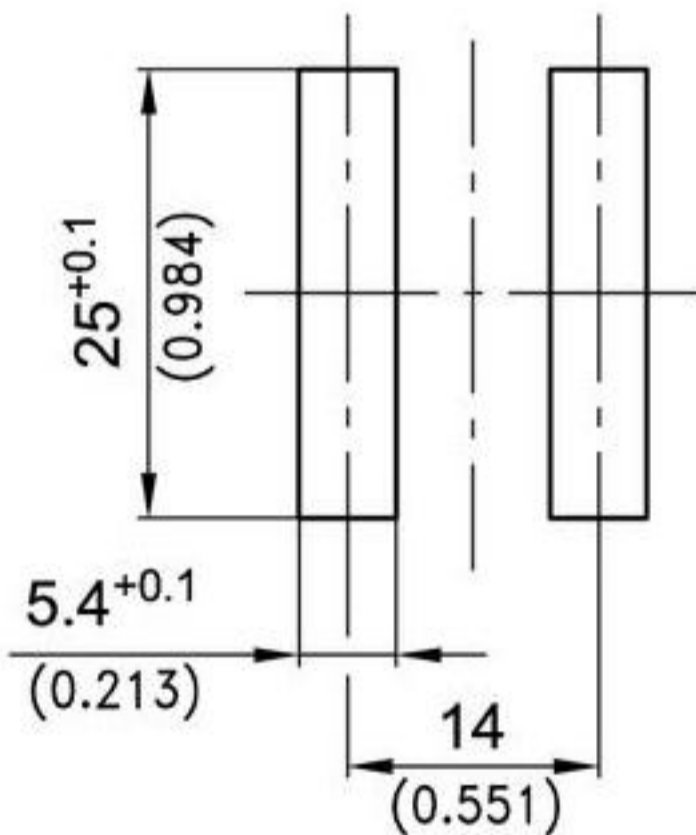
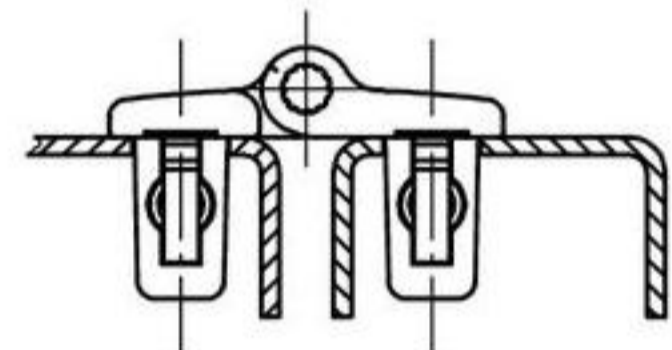


Cutout incl. paint



alternative Cutout with fitting indication incl. paint

Example of application



	clamping range [Ⓢ]	zinc die, matt black	zinc die, matt chrome plated	see page
180° hinge	0,6 - 0,9	418-9301.33-00008	418-9301.40-00008	
	0,8 - 1,1	418-9301.33-00010	418-9301.40-00010	
	1,2 - 1,5	418-9301.33-00014	418-9301.40-00014	
	1,8 - 2,1	418-9301.33-00020	418-9301.40-00020	
	2,2 - 2,5	418-9301.33-00024	418-9301.40-00024	
Other [Ⓢ] - dimension on request!				
Tool for uninstallation		292-0306.80-02530	292-0306.80-02530	01.109

4-249.02SL Hinge Pr01 SNAP-LINE 180°

nested door

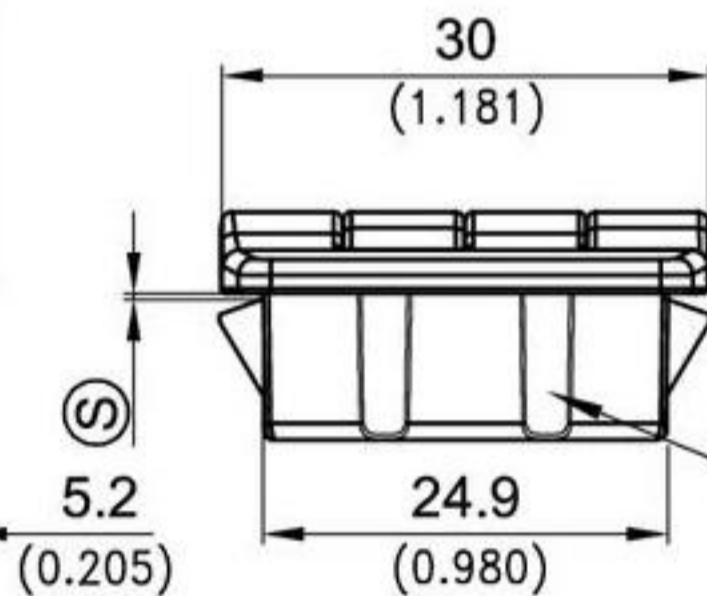
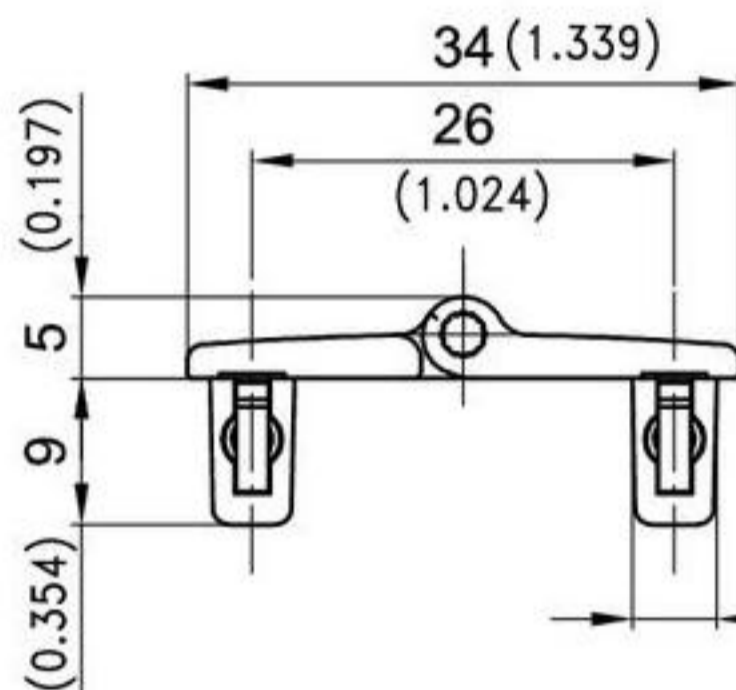


Small elegant hinge.

- 180° Opening.
- Installation by a simple push into the cutout.
- To guarantee a correct positional installation, the cutouts can have indentations.

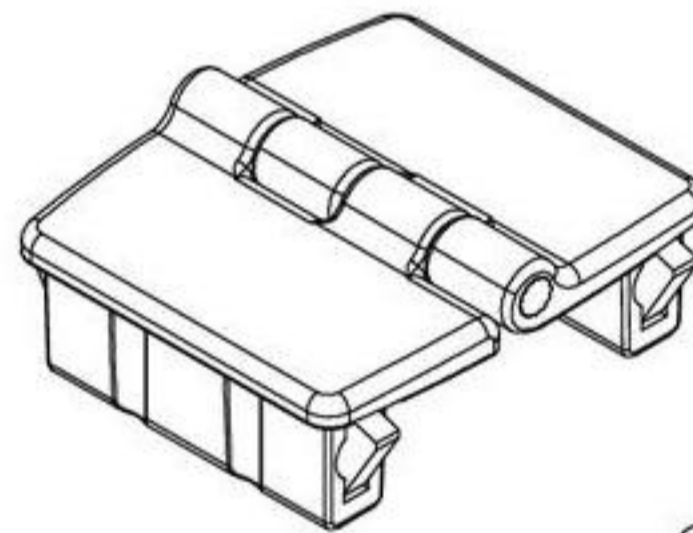
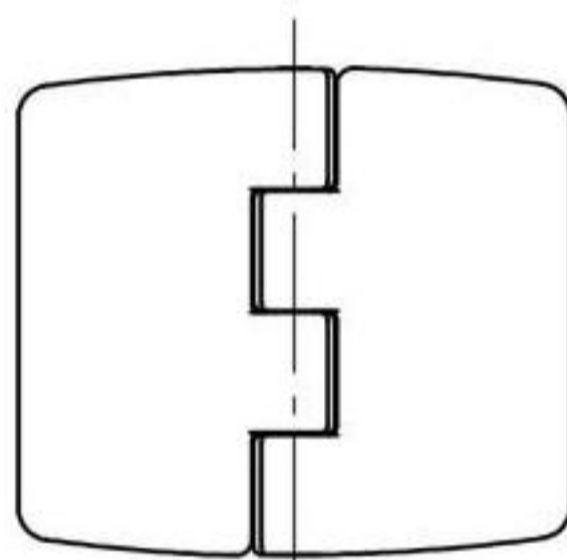
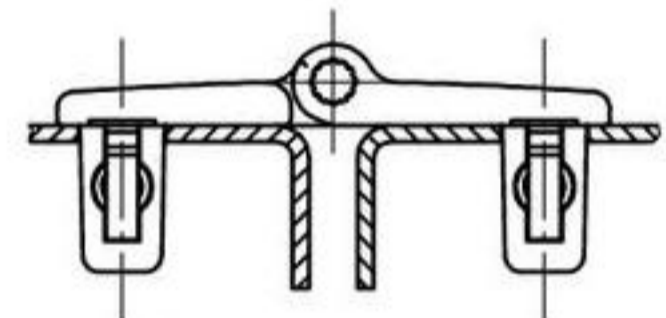
Material:

- **Hinge Parts:**
zinc die, matt chrome plated, or zinc die, matt black.
- **Pin:**
stainless steel
- **Snap wedges:**
sintered steel



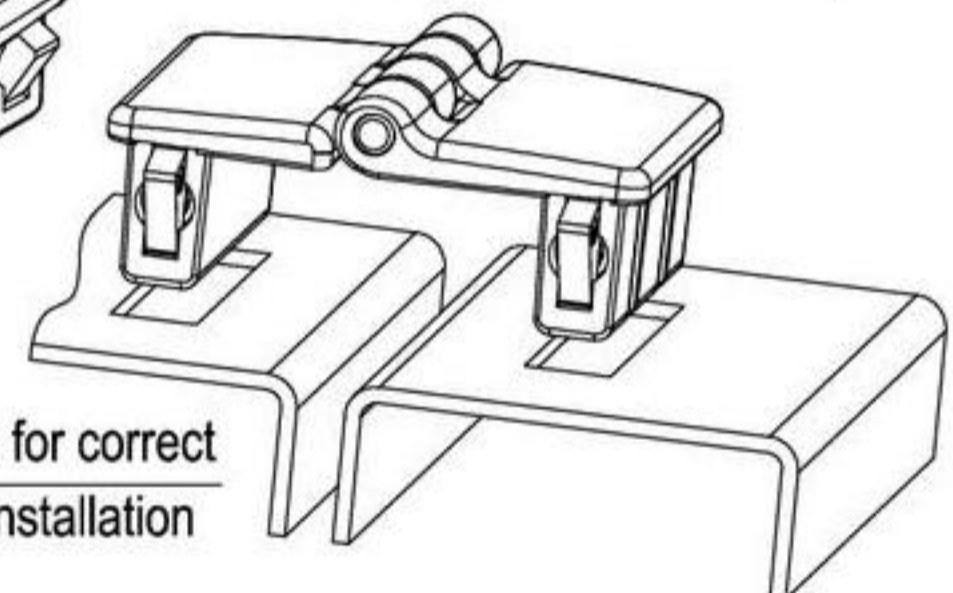
indentation for correct positional installation

Example of application

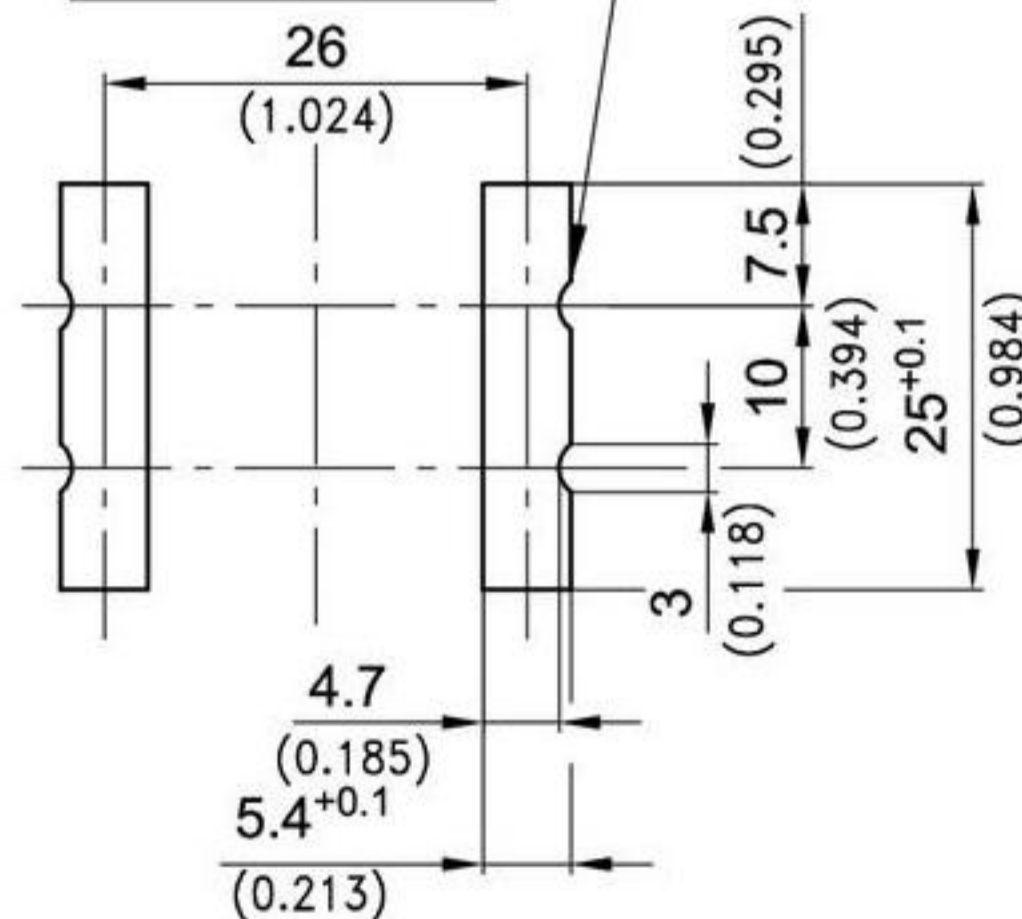
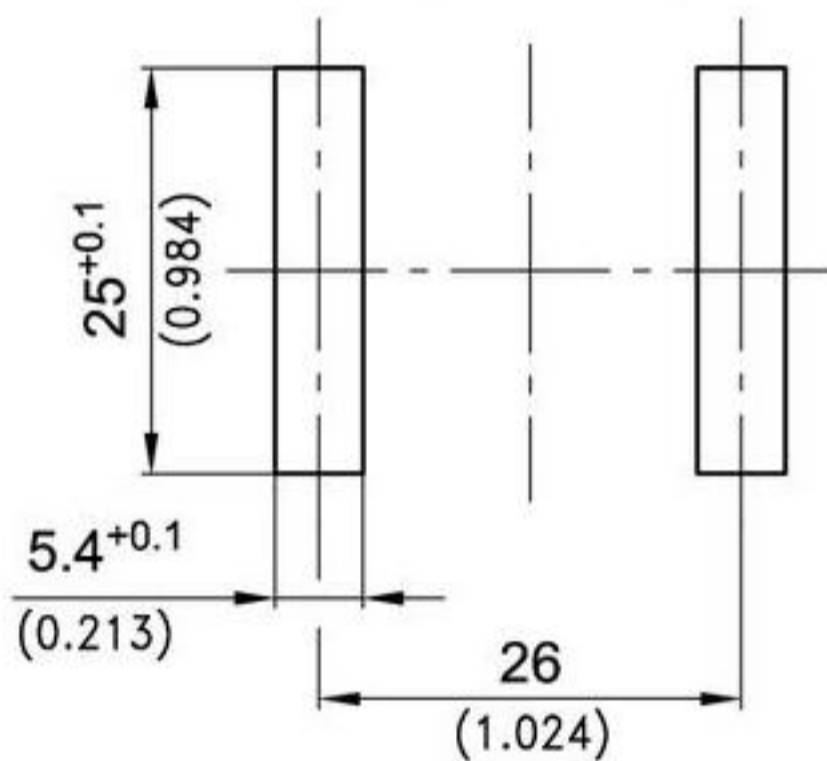


alternative Cutout with fitting indication incl. paint

indentation for correct positional installation



Cutout incl. paint



	clamping range [Ⓢ]	zinc die, matt black	zinc die, matt chrome plated	see page
180° hinge	0,6 - 0,9	418-9302.33-00008	418-9302.40-00008	
	0,8 - 1,1	418-9302.33-00010	418-9302.40-00010	
	1,2 - 1,5	418-9302.33-00014	418-9302.40-00014	
	1,8 - 2,1	418-9302.33-00020	418-9302.40-00020	
	2,2 - 2,5	418-9302.33-00024	418-9302.40-00024	
Other [Ⓢ] - dimension on request!				
Tool for uninstallation		292-0306.80-02530	292-0306.80-02530	01.109

4-249.03SL Hinge Pr01 SNAP-LINE 180°

nested door

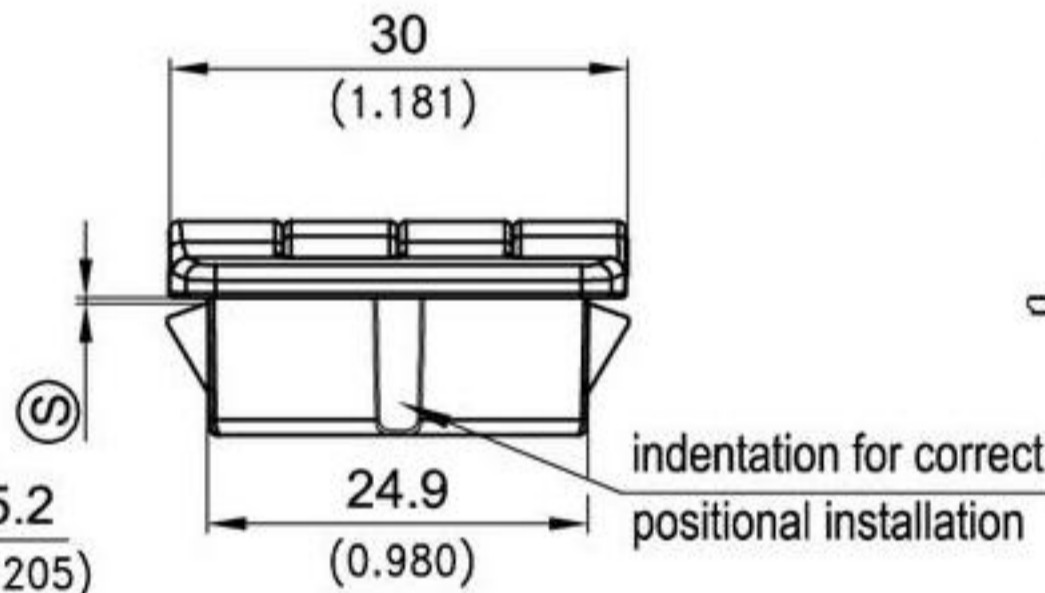
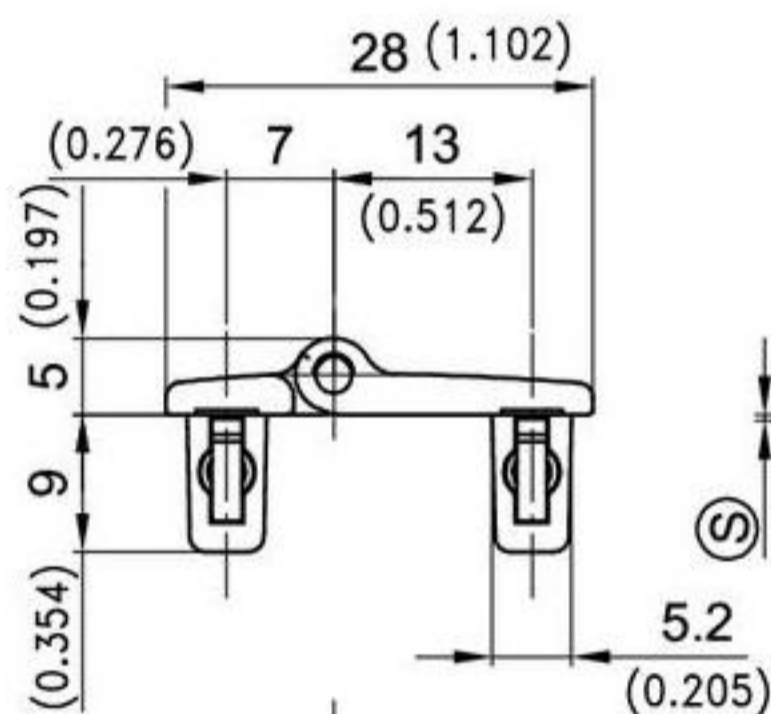


Small elegant hinge.

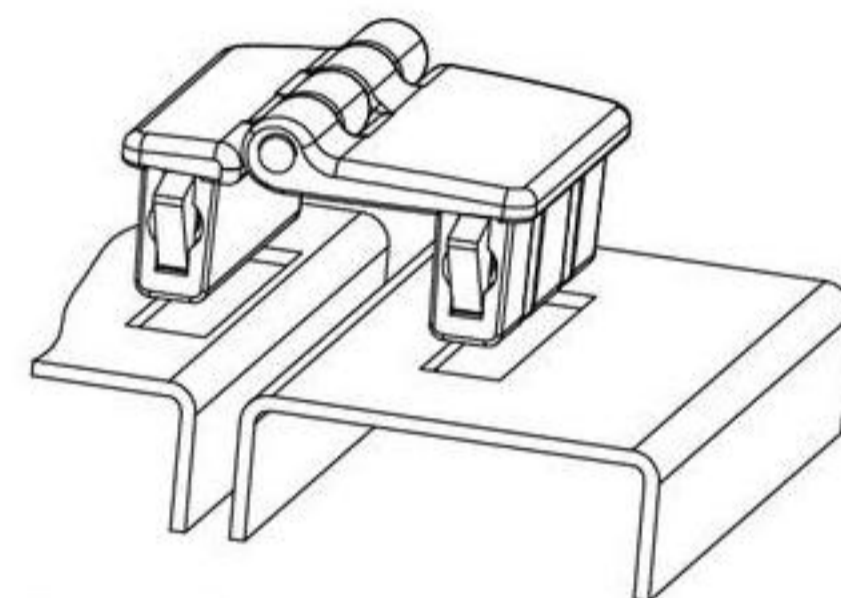
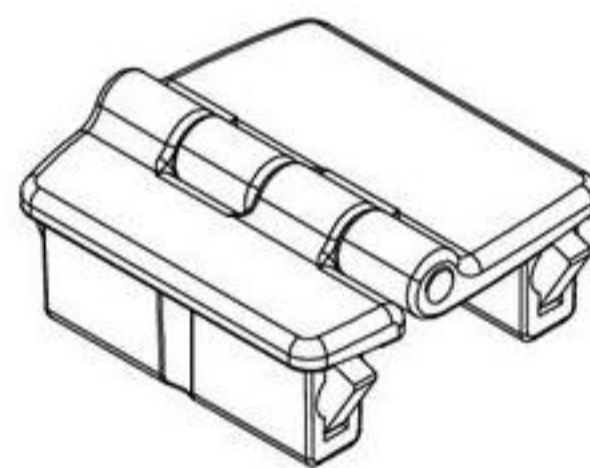
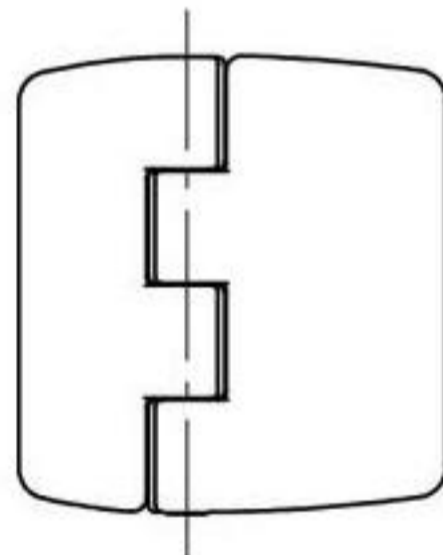
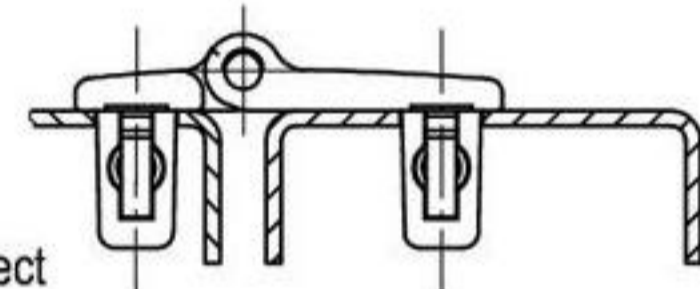
- 180° Opening.
- Installation by a simple push into the cutout.
- To guarantee a correct positional installation, the cutouts can have indentations.

Material:

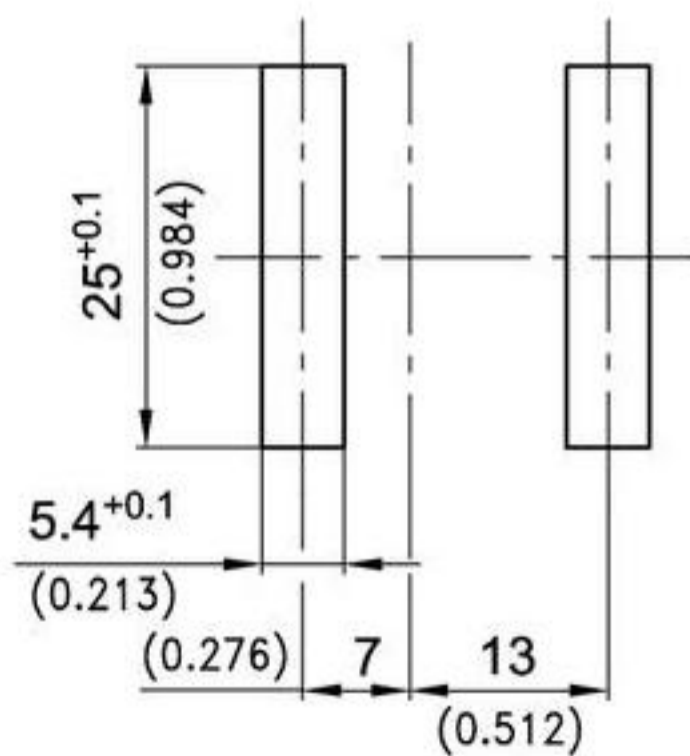
- **Hinge Parts:**
zinc die, matt chrome plated, or zinc die, matt black.
- **Pin:**
stainless steel
- **Snap wedges:**
sintered steel



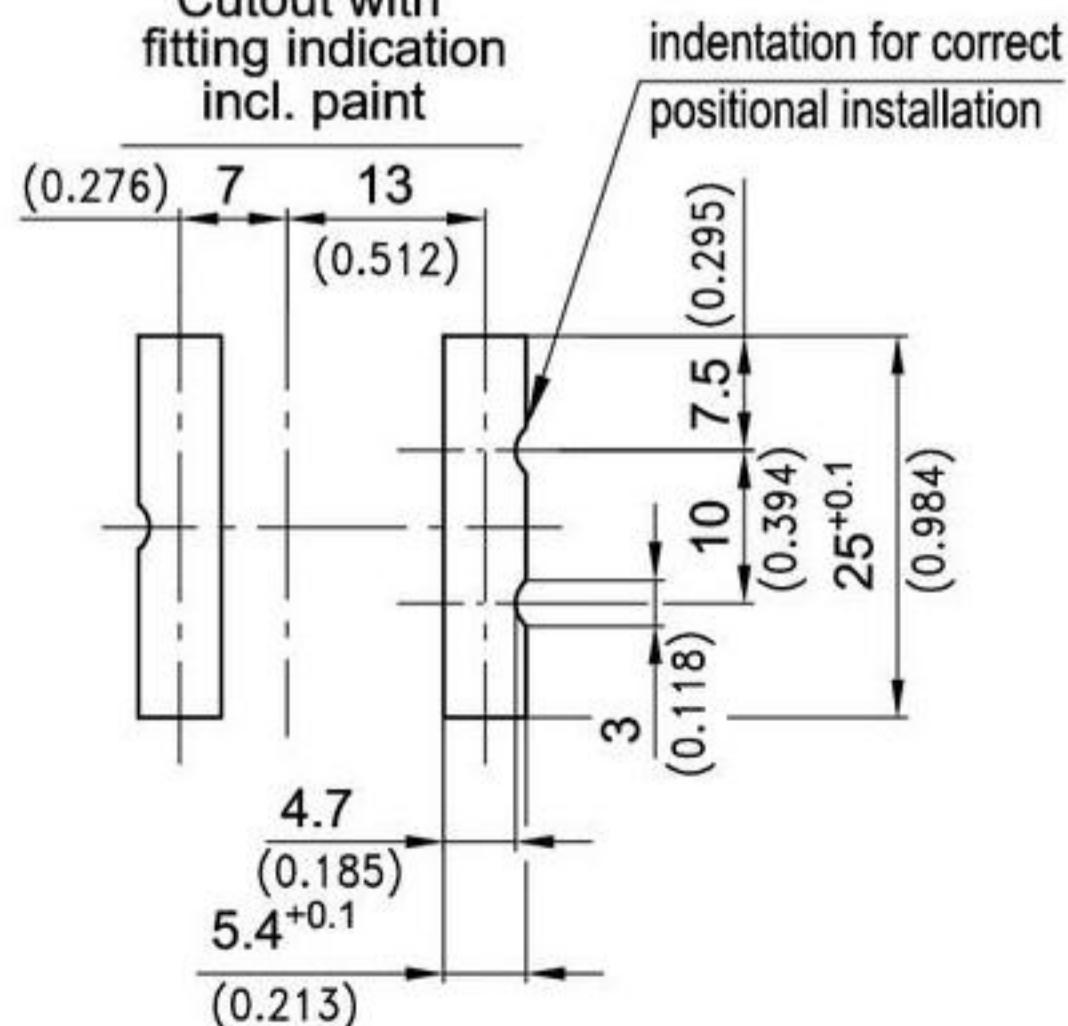
Example of application



Cutout incl. paint



alternative Cutout with fitting indication incl. paint



	clamping range ©	zinc die, matt black	zinc die, matt chrome plated	see page
180° hinge	0,6 - 0,9	418-9303.33-00008	418-9303.40-00008	
	0,8 - 1,1	418-9303.33-00010	418-9303.40-00010	
	1,2 - 1,5	418-9303.33-00014	418-9303.40-00014	
	1,8 - 2,1	418-9303.33-00020	418-9303.40-00020	
	2,2 - 2,5	418-9303.33-00024	418-9303.40-00024	
Other © - dimension on request!				
Tool for uninstallation		292-0306.80-02530	292-0306.80-02530	01.109

4-249.04SL Hinge Pr01 SNAP-LINE 180°

nested door

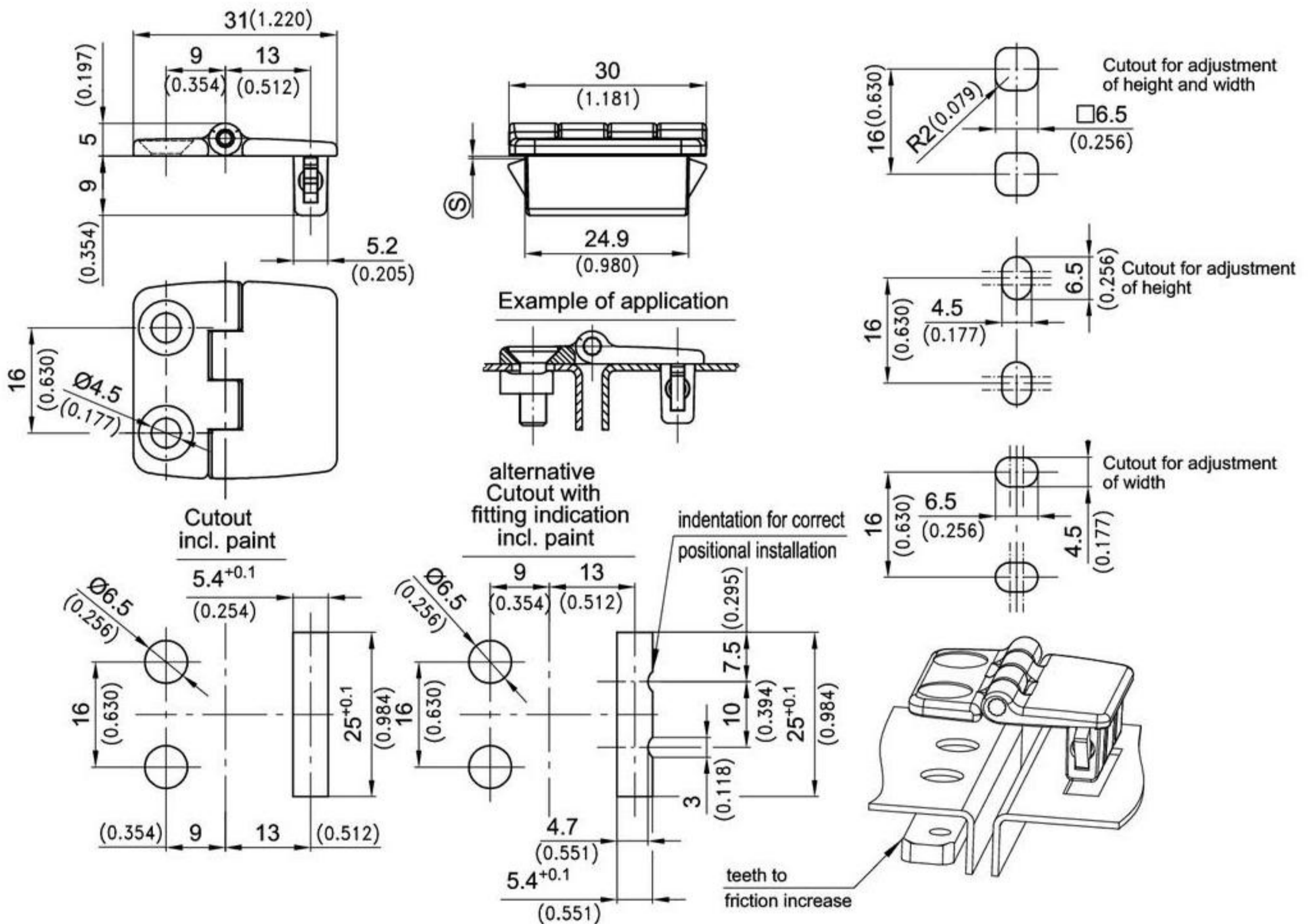


Small elegant hinge.

- 180° Opening.
- To be mounted by simple pushing into appropriate cutouts and by screws.
- With the screw fastened versions countersunk screws according DIN 7991 or according DIN EN ISO 10642 can be used.
- To guarantee a correct positional installation, the cutouts can have indentations.
- Adjustments are possible with respective bores provided.
- The nut plate can be mounted in different ways, according to the application.
- Countersunk screws are not included!

Material:

- **Hinge Parts:**
zinc die, matt chrome plated, or zinc die, matt black.
- **Pin:**
stainless steel
- **Snap wedges:**
sintered steel
- **Nut plate:**
steel, zinc plated



	clamping range ©	zinc die, matt black	zinc die, matt chrome plated	see page
180° hinge	0,6 - 0,9	418-9304.33-00008	418-9304.40-00008	
	0,8 - 1,1	418-9304.33-00010	418-9304.40-00010	
	1,2 - 1,5	418-9304.33-00014	418-9304.40-00014	
	1,8 - 2,1	418-9304.33-00020	418-9304.40-00020	
	2,2 - 2,5	418-9304.33-00024	418-9304.40-00024	
Please order nut plate separately		218-0907.15-00000	218-0907.15-00000	
Other © - dimension on request!				
Tool for uninstallation		292-0306.80-02530	292-0306.80-02530	01.109

4-249.05SL Hinge Pr01 SNAP-LINE 180°

nested door

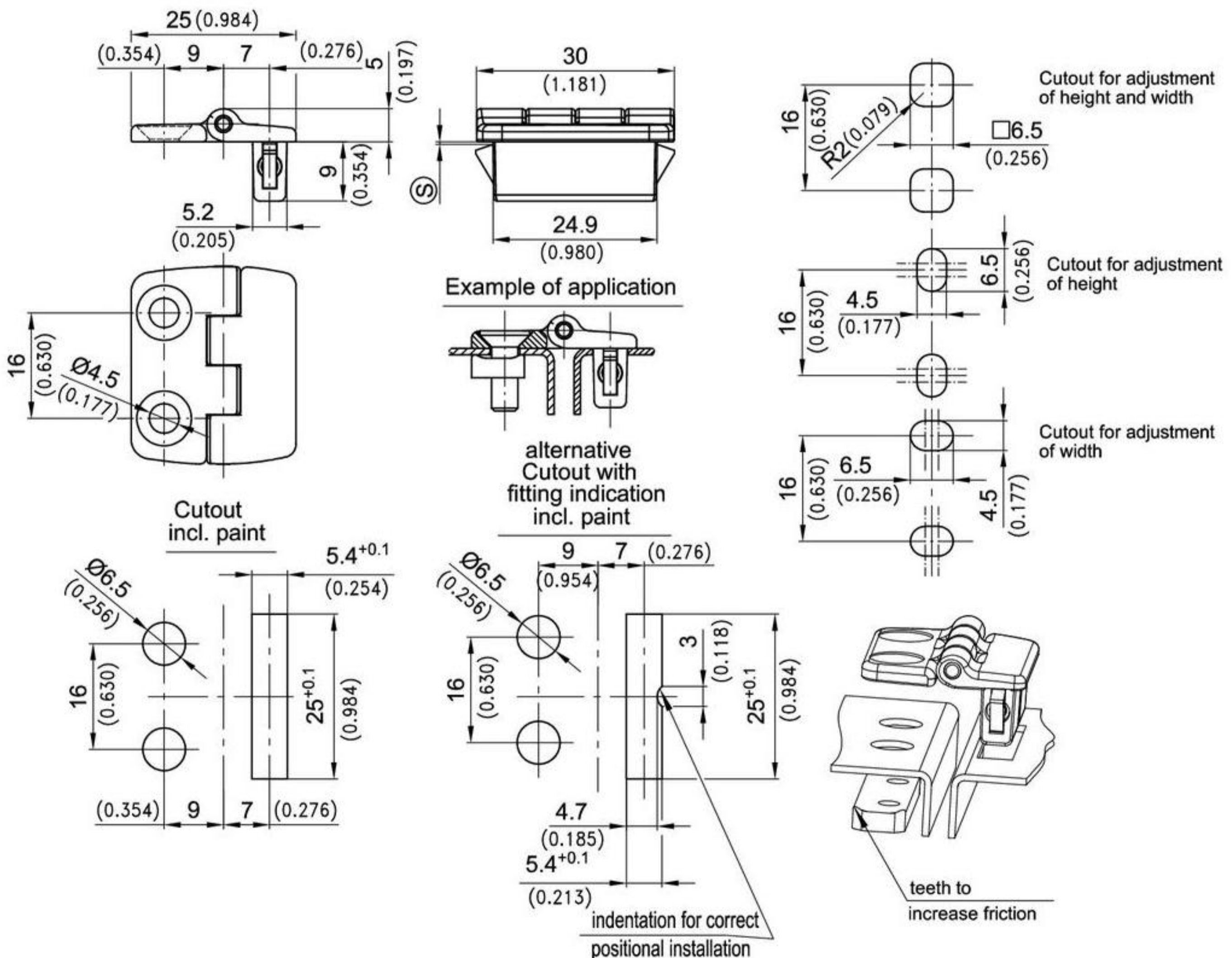


Small elegant hinge.

- 180° Opening.
- To be mounted by simple pushing into appropriate cutouts and by screws.
- With the screw fastened versions countersunk screws according DIN 7991 or according DIN EN ISO 10642 can be used.
- To guarantee a correct positional installation, the cutouts can have indentations.
- Adjustments are possible with respective bores provided.
- The nut plate can be mounted in different ways, according to the application.
- Countersunk screws are not included!

Material:

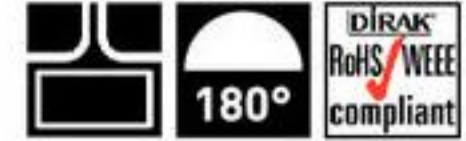
- **Hinge Parts:**
zinc die, matt chrome plated, or zinc die, matt black.
- **Pin:**
stainless steel
- **Snap wedges:**
sintered steel
- **Nut plate:**
steel, zinc plated



	clamping range ©	zinc die, matt black	zinc die, matt chrome plated	see page
180° Hinge	0,6 - 0,9	418-9305.33-00008	418-9305.40-00008	
	0,8 - 1,1	418-9305.33-00010	418-9305.40-00010	
	1,2 - 1,5	418-9305.33-00014	418-9305.40-00014	
	1,8 - 2,1	418-9305.33-00020	418-9305.40-00020	
	2,2 - 2,5	418-9305.33-00024	418-9305.40-00024	
Please order nut plate separately		218-0907.15-00000	218-0907.15-00000	
Other © - dimension on request!				
Tool for uninstallation		292-0306.80-02530	292-0306.80-02530	01.109

4-249 Hinge Pr01 180°

for nested door

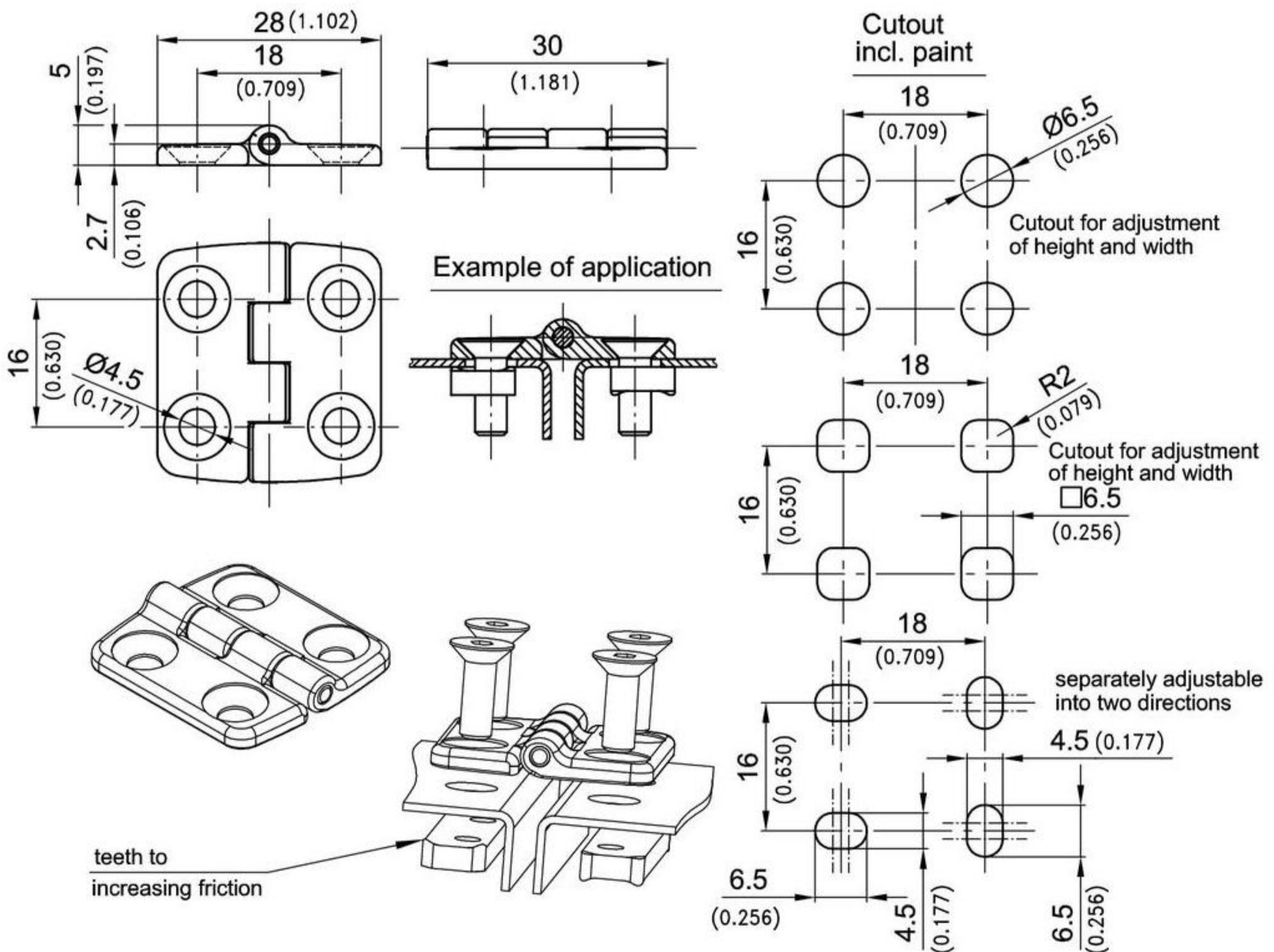


Small elegant hinge.

- 180° Opening.
- Adjustments are possible with respective bores provided.
- The nut plate can be mounted in different ways, according to the application.

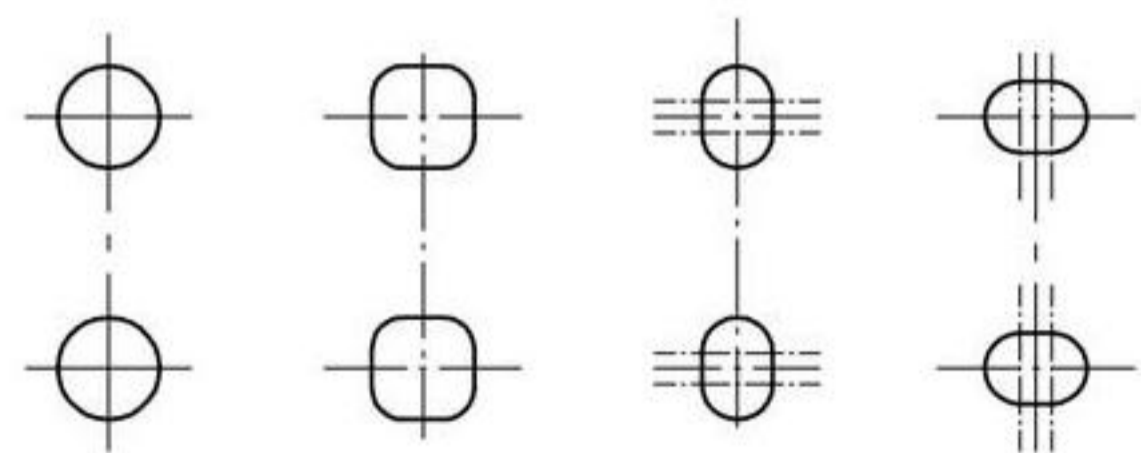
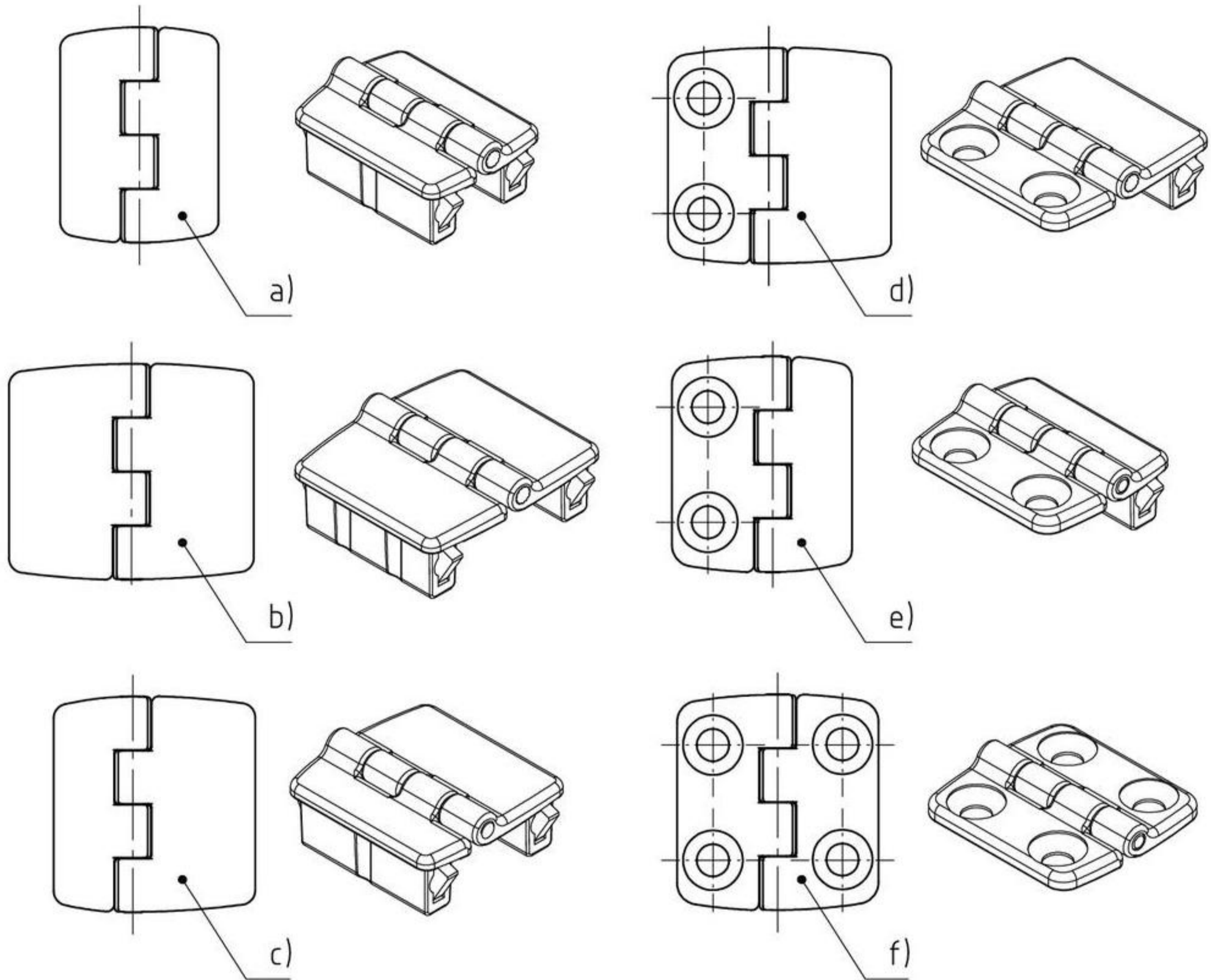
Material:

- **Hinge Parts:**
zinc die, matt chrome plated, or zinc die, matt black.
- **Pin:**
stainless steel
- **Nut plate:**
steel, zinc plated



Version	zinc die, matt chrome plated	zinc die, matt black	see page
180° hinge	218-9502	218-9501	
Countersunk screws are not included!			
Please order nut plate separately:			218-0907.15-00000
Further types with D-SNAP fastening			01.49

4-249SL Hinge combinations SNAP-LINE 180°



Six different combinations are available.

Different Cutouts for adjustment at height and width

	see page
a)	01.50
b)	01.51
c)	01.52
d)	01.53
e)	01.54
f)	06.9