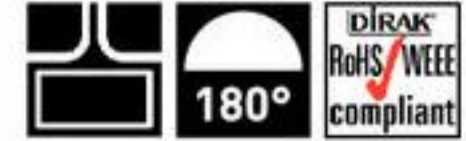


4-330 Hinge Pr01 180°

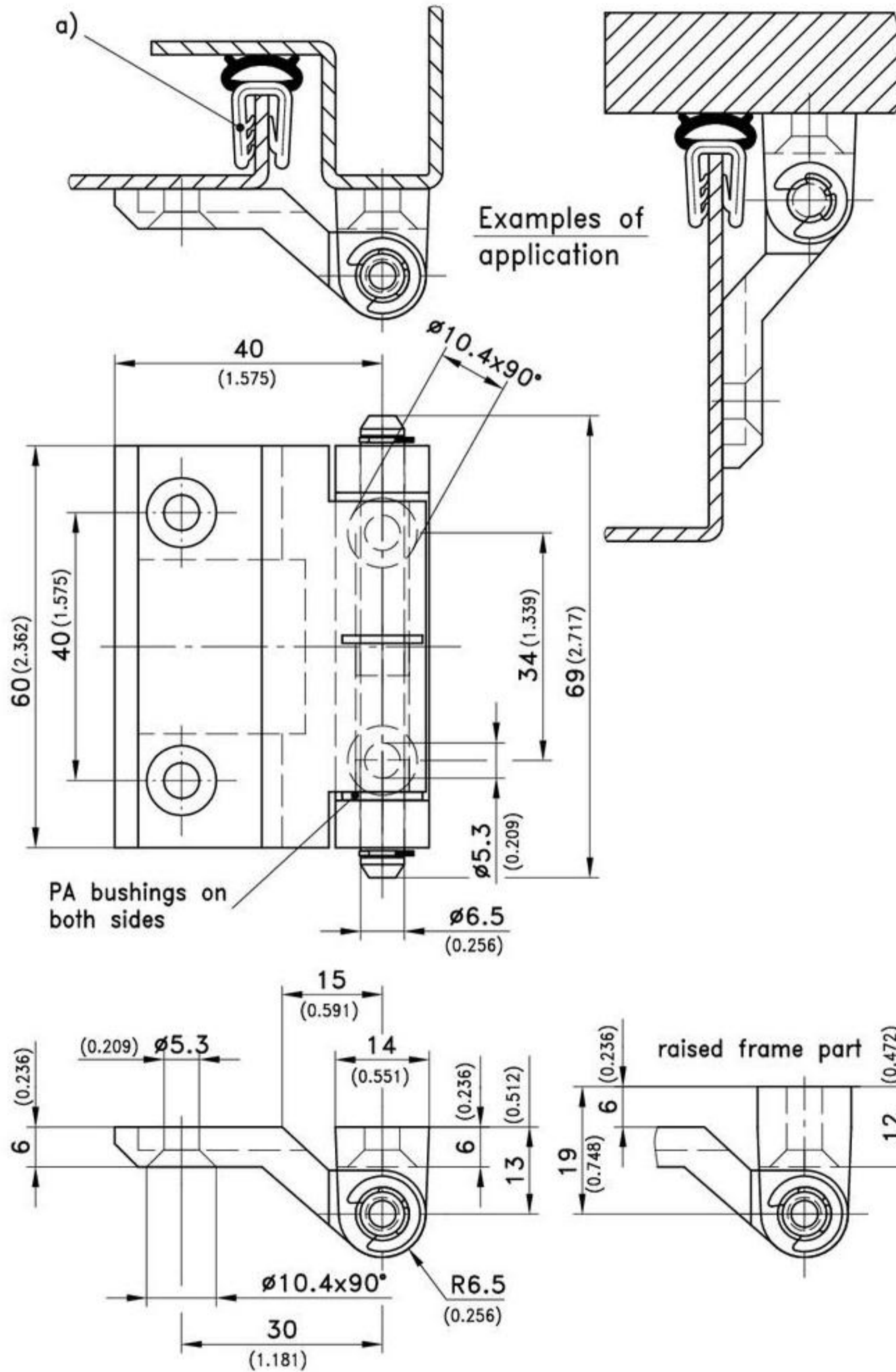
for nested door



180° Hinge with PA bushings.
• Opening angle max. 180°.

Material:

- **Hinge Parts:**
zinc die, black or chrome plated
- **Pin:**
stainless steel or steel, zinc plated
- **Bushings:**
PA, natural



Version	standard frame part chrome plated	standard frame part black	raised frame part chrome plated	raised frame part black	see page
Hinge with PA bushings					
Pin: steel, zinc plated	217-9109	217-9101	217-9116	217-9103	
Pin: stainless steel	217-9110	217-9102	217-9117	217-9104	
Countersunk machine screws, zinc plated					09.5
a) i.e. Clip-on Profiles				209-0201	07.19

4-330SL Hinge Pr01 SNAP-LINE

nested door

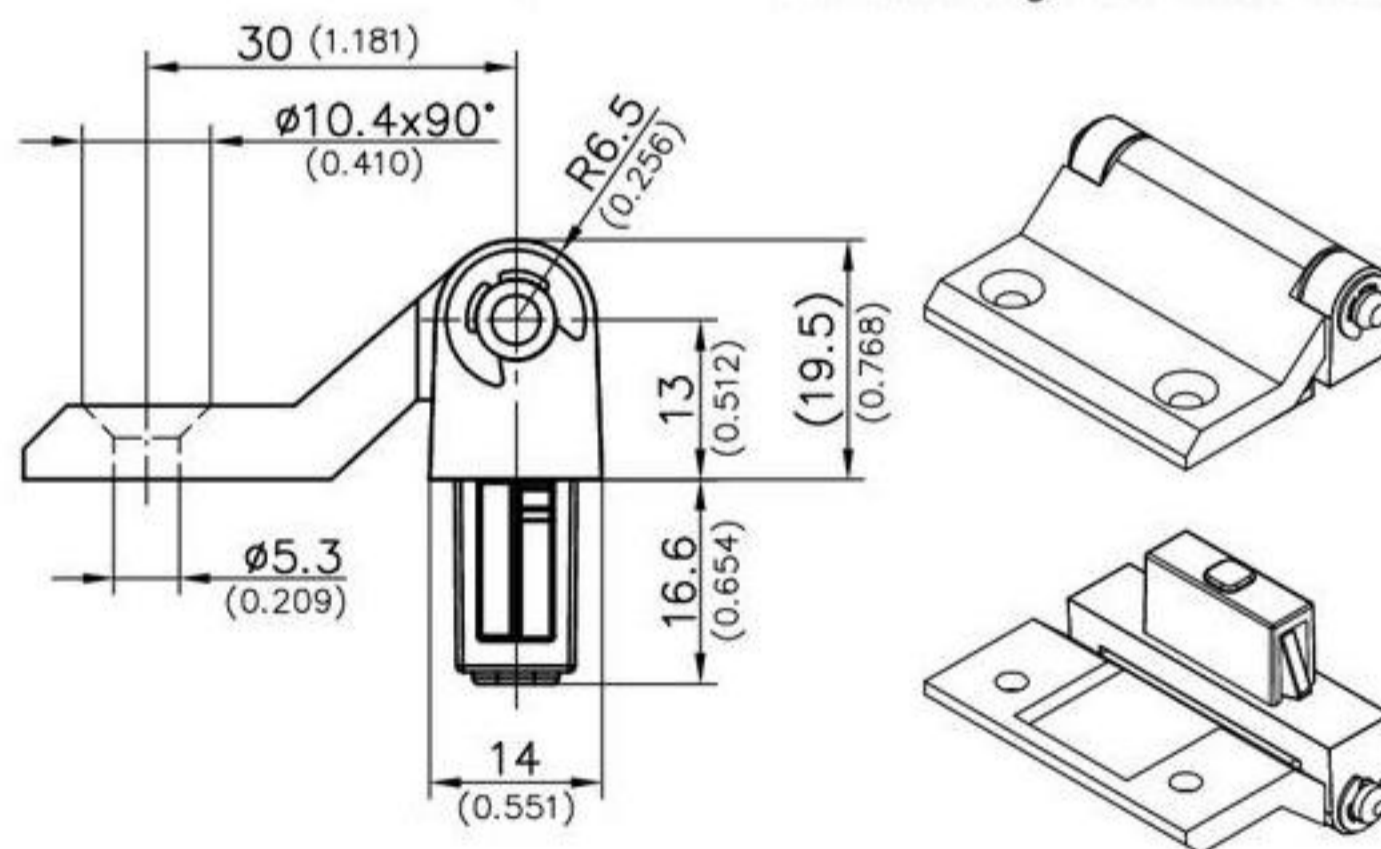
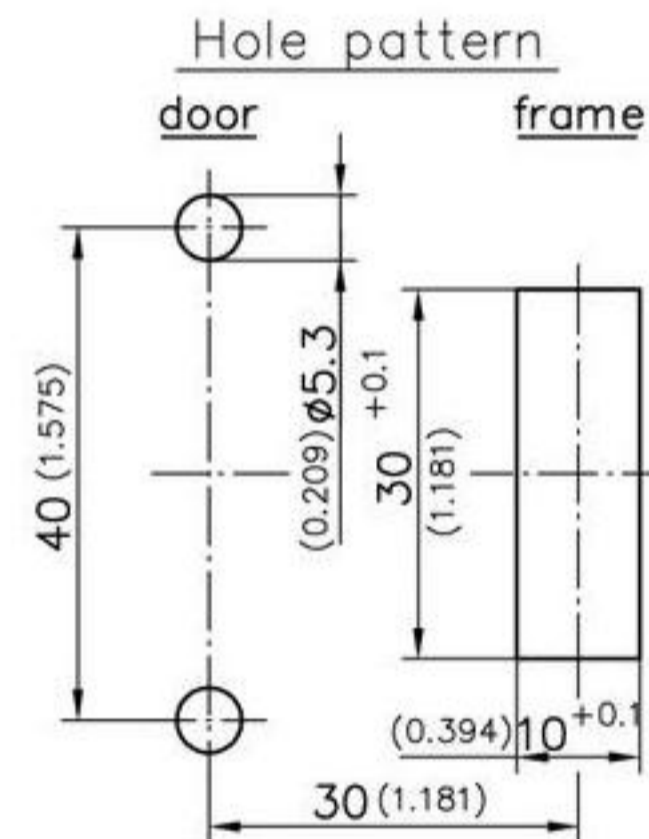
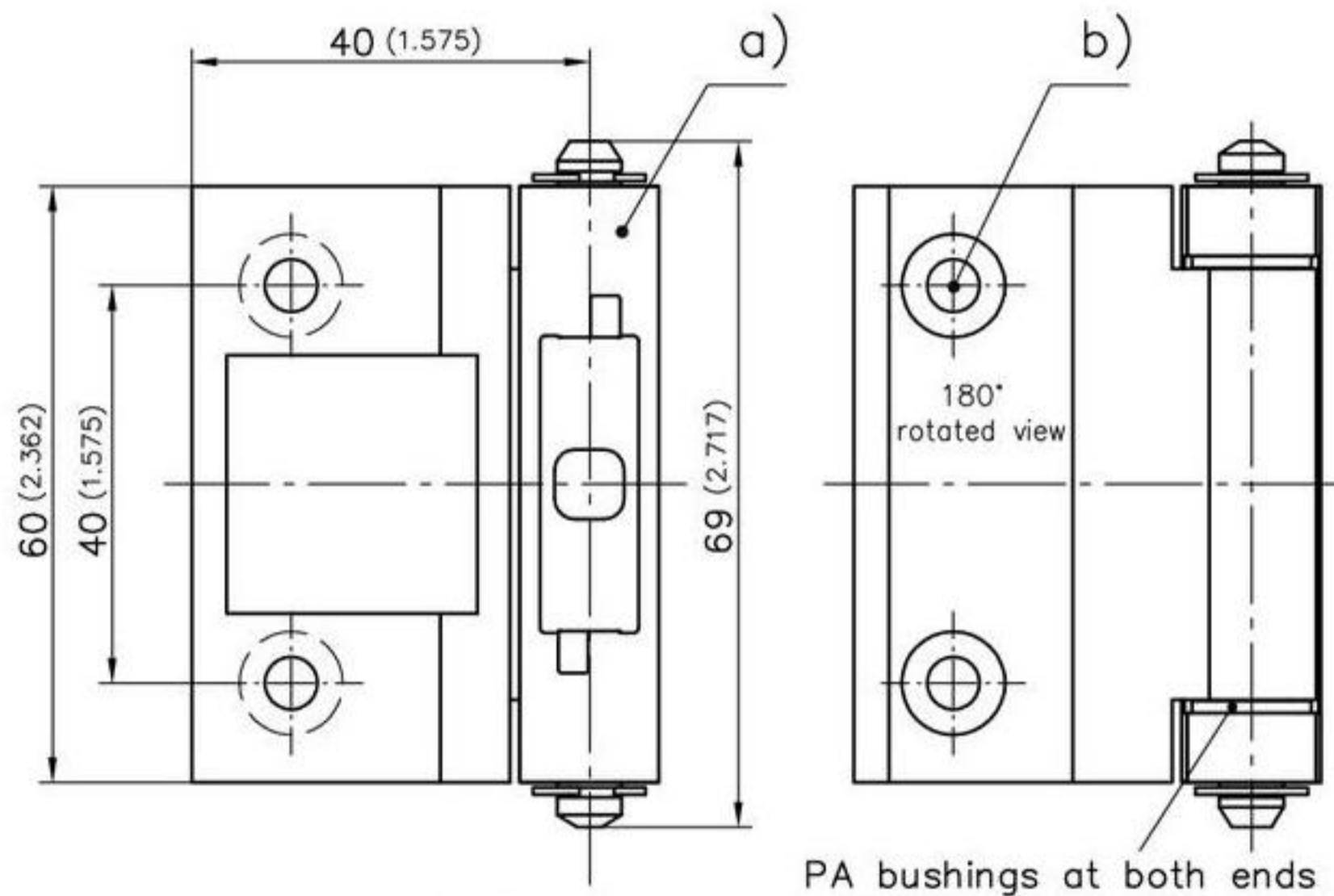


180° hinge SNAP-LINE frame part snap-in.
• Opening 180°
• Further details and dimensions see page 06.28.

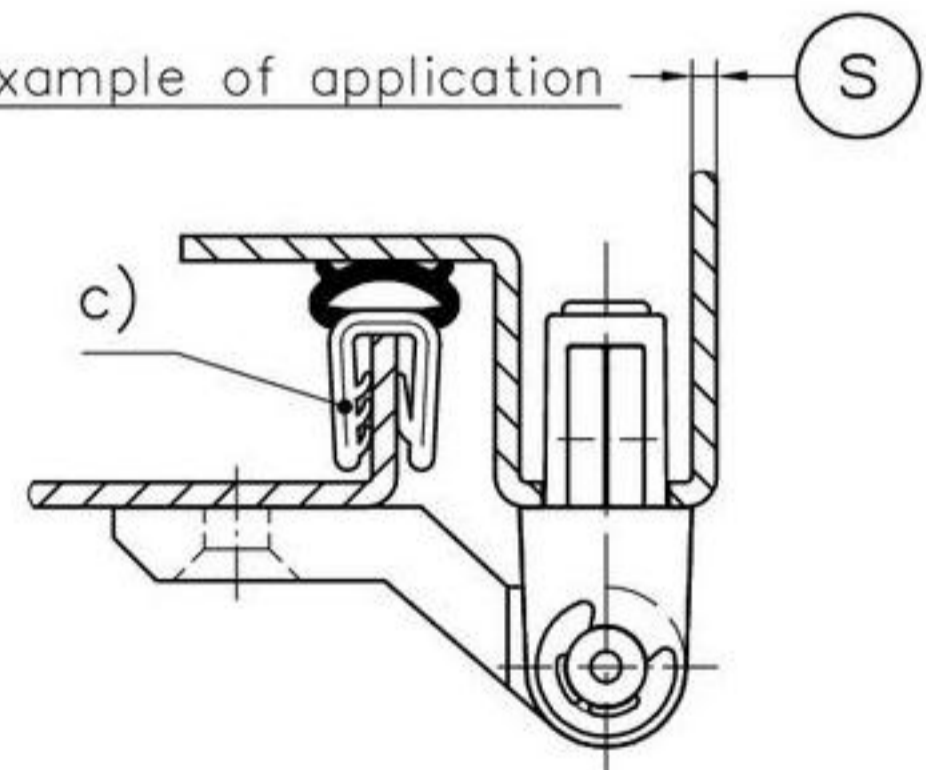
Material:

- **Frame part and Door part:** zinc die, black
- **loose pin:** steel, zinc plated
- **fixed pin:** stainless steel

- **Bushings:** PA
- **Washers:** steel, zinc plated
- **Snap wedges:** sintered metal, plated



Example of application



a) Hinge, snap-in	clamping range ©	loose pin (steel, zinc plated)	fixed pin (stainless steel)	see page
	1,2 - 1,7	417-9001.00-00015	417-9101.00-00015	
	1,7 - 2,2	417-9001.00-00020	417-9101.00-00020	
	2,2 - 2,7	417-9001.00-00025	417-9101.00-00025	
	2,7 - 3,2	417-9001.00-00030	417-9101.00-00030	
b) Countersunk machine screws				09.5
c) e.g. Clip-on profile		209-0201.00-00000	209-0201.00-00000	07.19
d) Cover for cutout 30x10		292-0401.00-03010	292-0401.00-03010	01.107
e) Reinforcement plate for thin-walled sheets and for higher loads:		292-0702.15-01030	292-0702.15-01030	01.108
f) Tool for uninstallation		292-0306.80-02530	292-0306.80-02530	01.109