

7-160 Concealed Hinge Pr03 120°

stainless steel AISI 304, door bending 26mm for surface mounted door

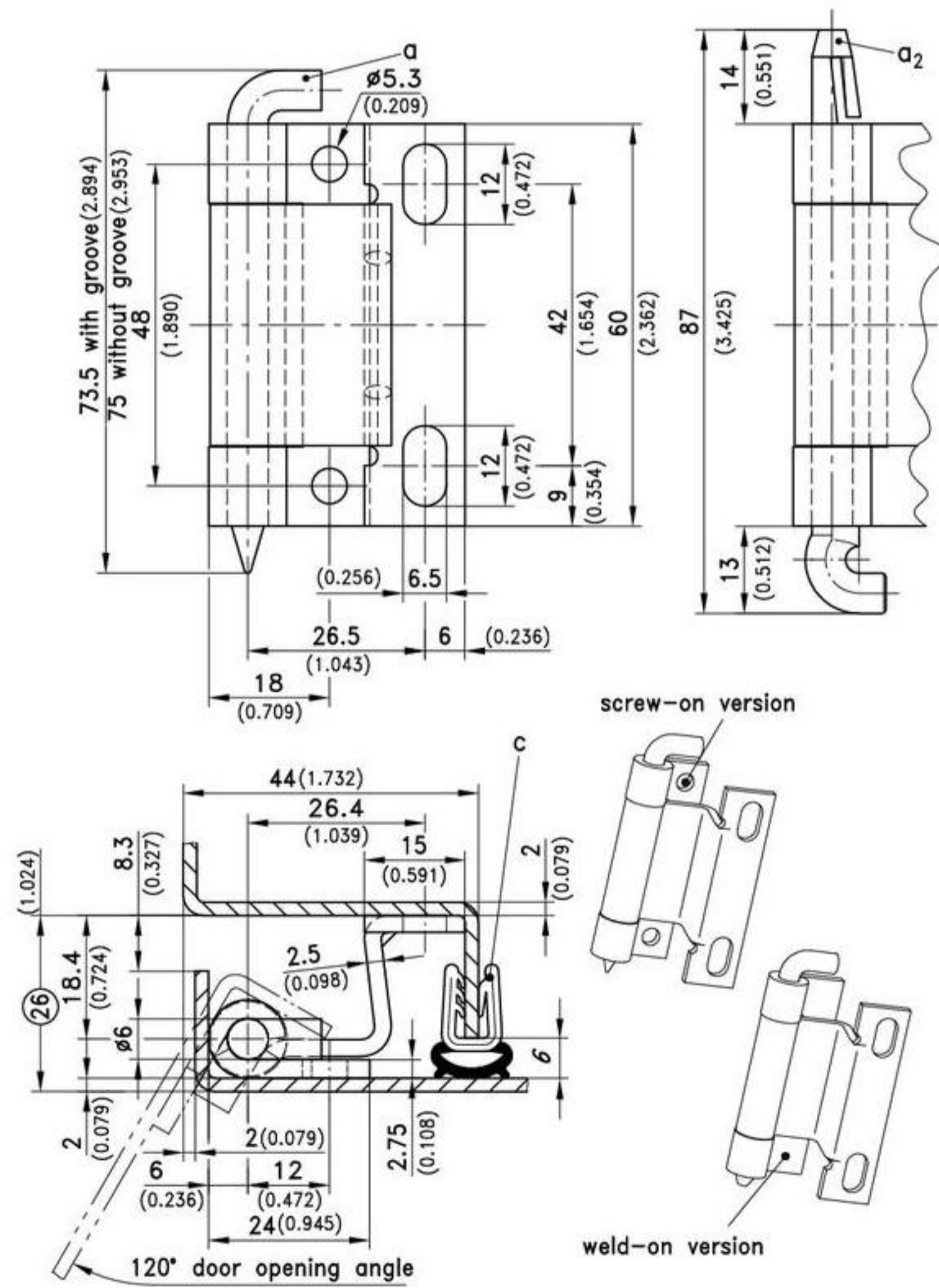


120° concealed hinge for surface mounted door

- RH or LH application.
- Frame part: Screw-on. Door part: weld-on.
- The POM pin is self-securing.

Material:

- **Hinge parts and pin:** stainless steel a2)
- **Pin:** POM natural



120° Concealed Hinge	door part screw-on	door part weld-on	see page
a) Pin without groove, stainless steel	216-9104	216-9122	
a1) Pin with groove for retaining ring, stainless steel	216-9112	216-9126	
a2) Pin, POM	216-9106	216-9124	
Optional:			
b) Retaining ring DIN 6799 RS4 for versions a1)	800-0138	800-0138	
c) e.g. Clip-on profile	209-0201	209-0201	