

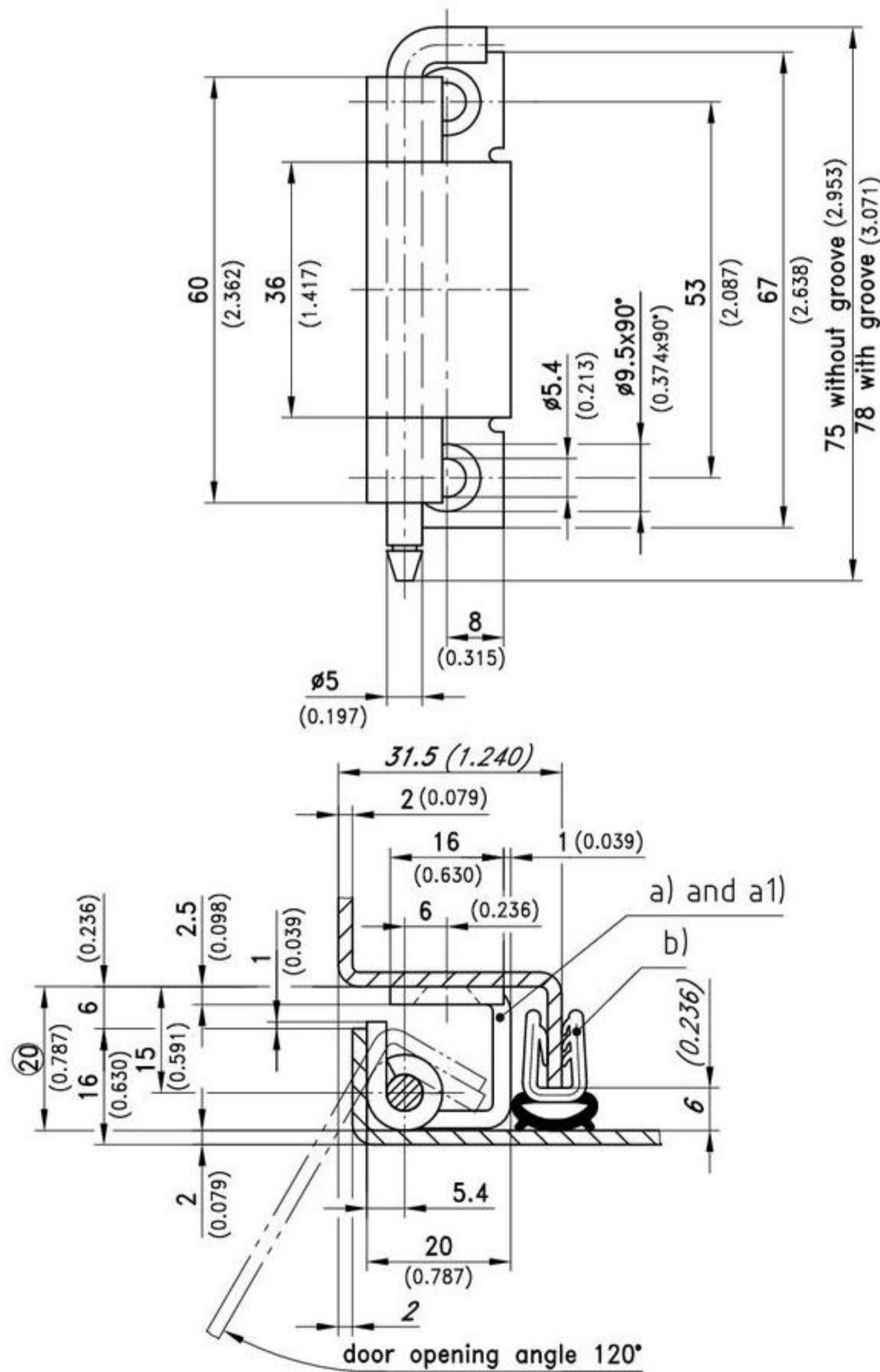
### 7-145 Concealed Hinge Pr03 120°

stainless steel AISI 304, door bending 20mm for surface mounted door



120° concealed hinge for surface mounted door  
 • RH or LH application.

**Material:**  
 • Hinge-parts and pin:  
 stainless steel



120° Concealed Hinge	Part No.	see page
a) pin without groove	216-9115	
a1) pin with groove (incl. C-clip)	216-9116	
b) e.g. Clip-on profile	209-0201	07.19