

4-119 Concealed Hinge Pr03 120°

Door bending 20mm, for surface mounted door

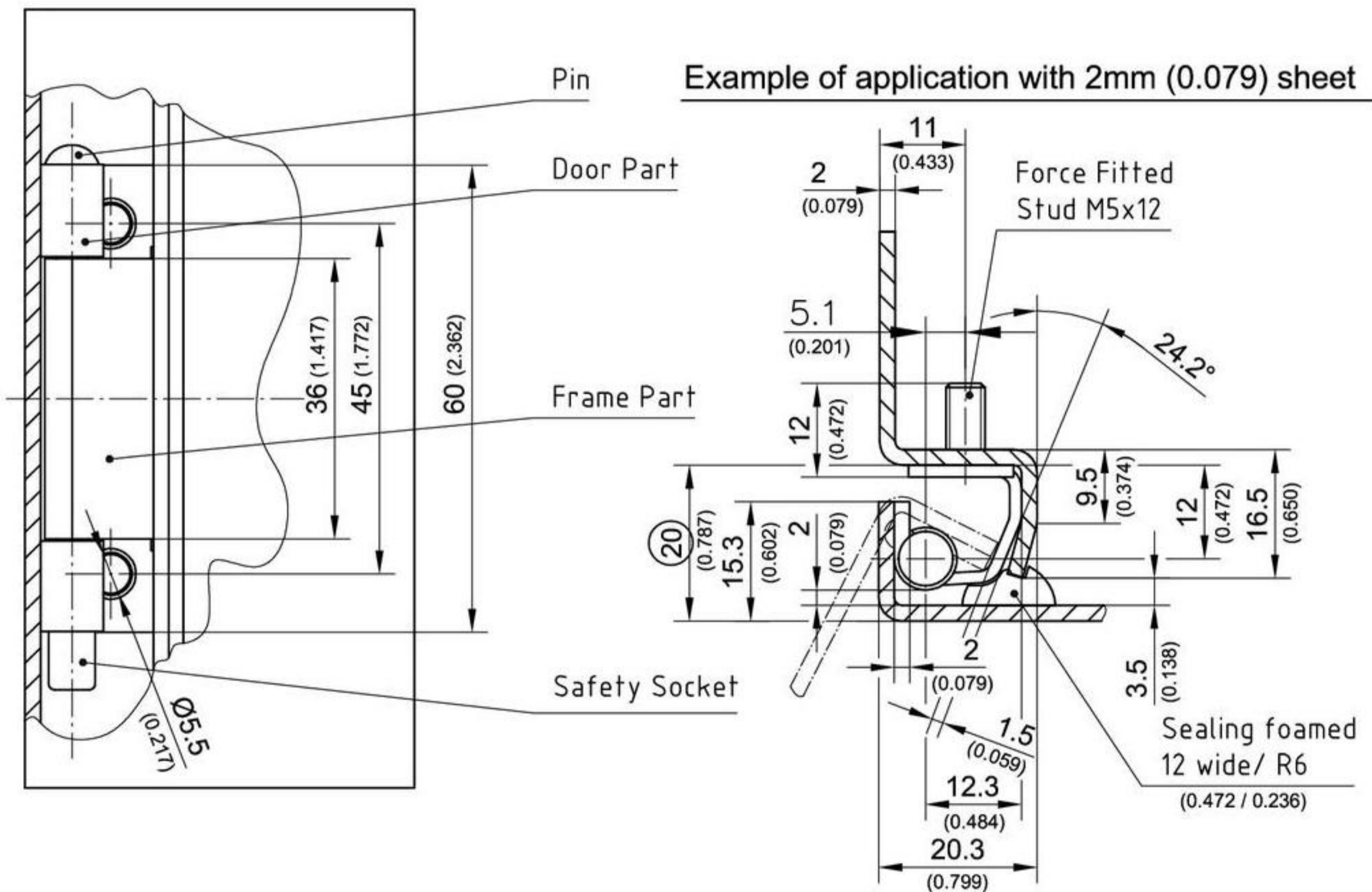


Concealed hinge for cabinets for surface mounted doors.

- Solid design.
- ~120° opening angle.
- For 20mm bending.
- RH or LH application.
- Frame part with force fitted stud M5.
- Door part weld on with prepared welding spots.
- Pin with PE safety socket.
- Attention: when 1.5mm sheets are used the assembly dimension change. For drawing on request.

Material:

- **Frame part:**
steel, zinc plated
- **door part:**
steel, not plated
- **Pin:**
AISI 304
- **Safety socket:**
PE



Concealed Hinge	Part No.	see page
Stainless steel version	216-9032	10.55