

4-122 Concealed Hinge Pr03 120°

Door bending 20mm for surface mounted door

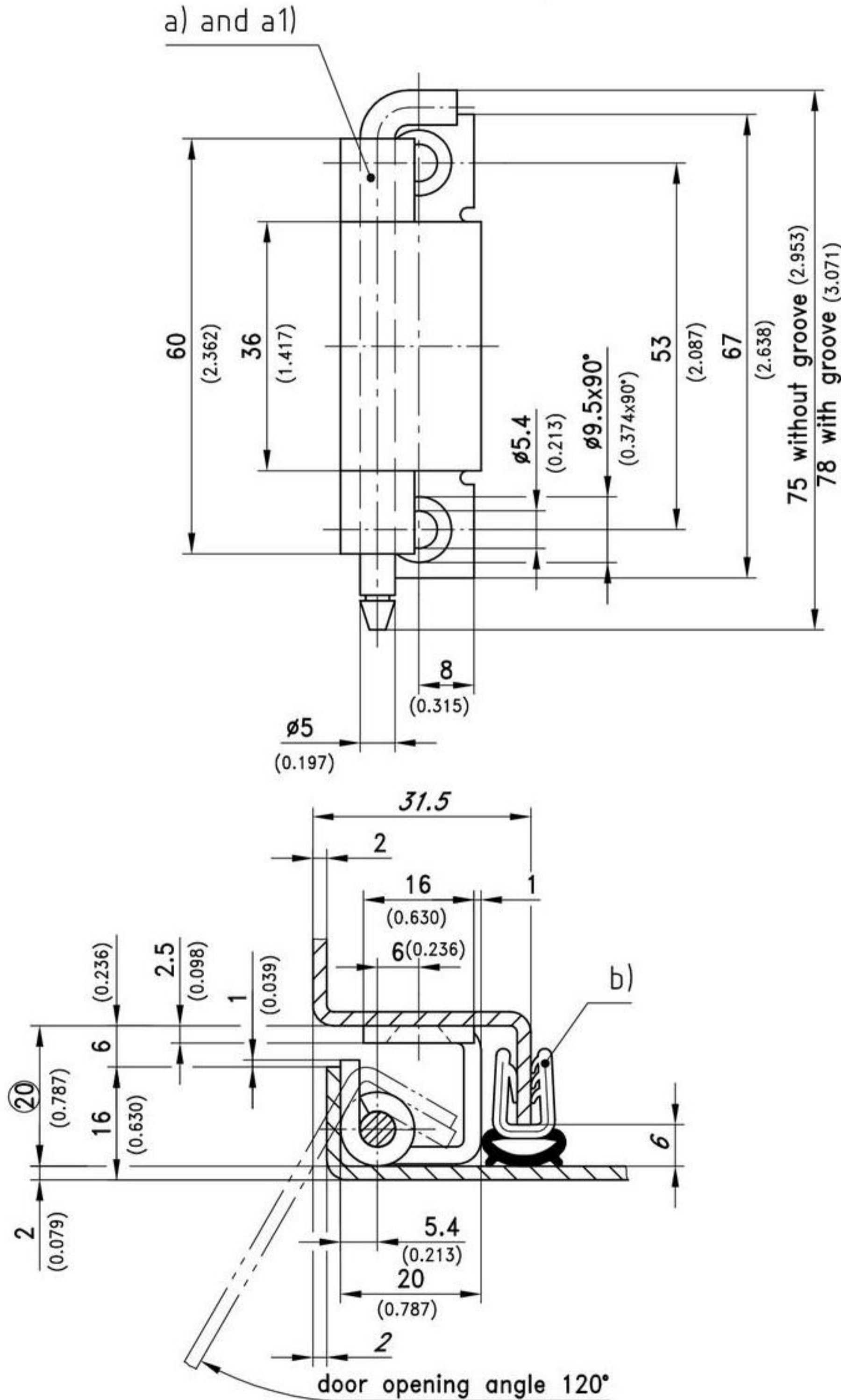


120° concealed hinge for surface mounted door

- RH or LH application.

Material:

- **Frame part:**
steel, zinc plated
- **door part:**
steel, not plated
- **Pin:**
steel, zinc plated



120° Concealed Hinge	Part No.	see page
a) Pin without groove	216-9005	
a1) Pin with groove (incl. C-clip)	216-9022	
Stainless steel version		10.57
b) e.g. Clip-on profile	209-0201	07.19