

6-1104 Bridge Handle

aluminium

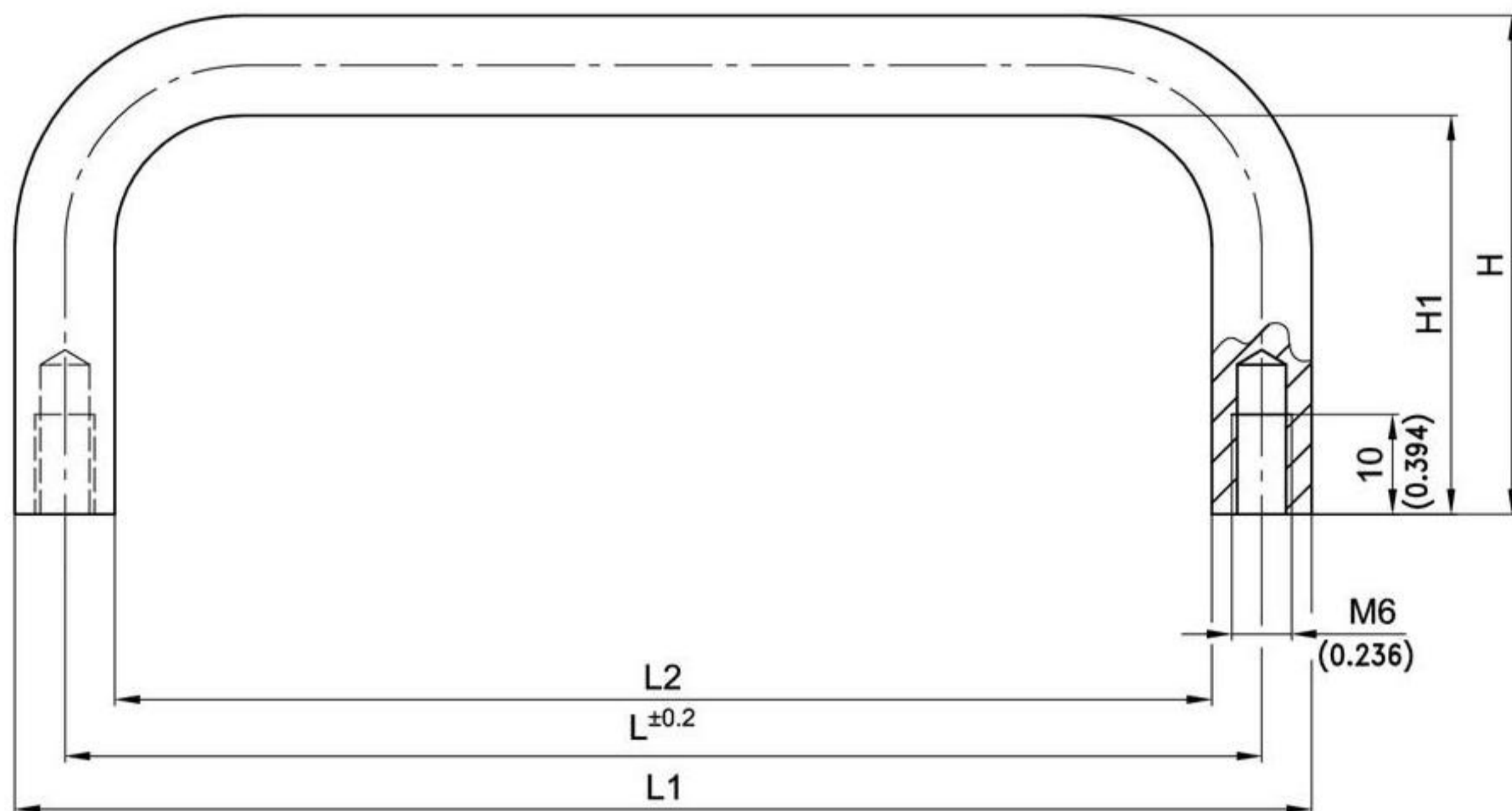
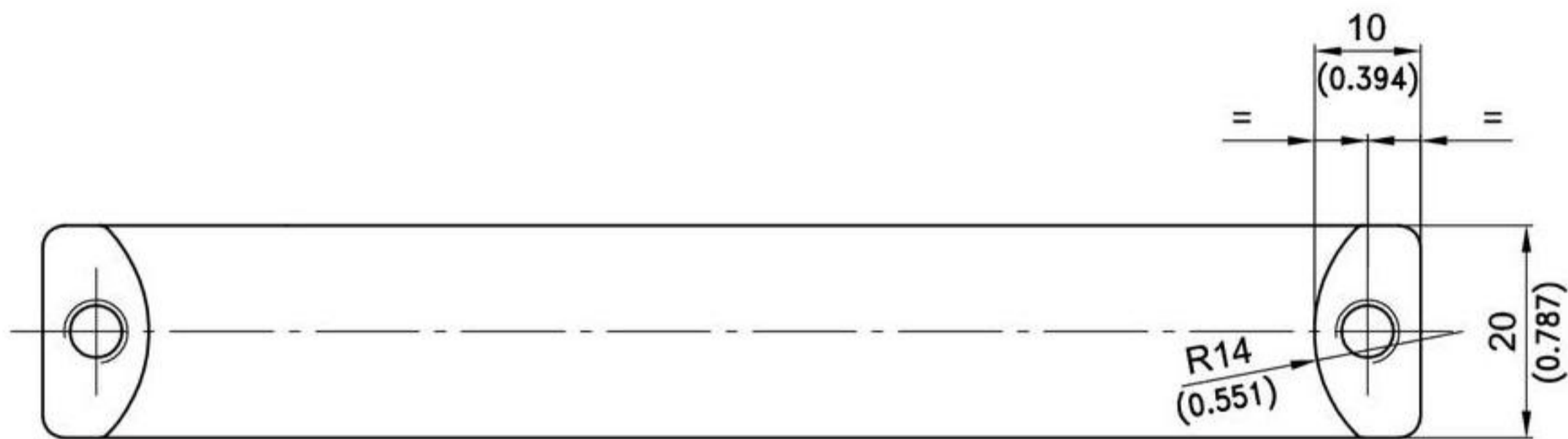


Solid aluminium handle, modern industrial design.

- Handles for machine building, tool building, electrical industry, hospital equipment, medical and food processing technology.
- Designed for vertical or horizontal uses.
- For screws M6.

Material:

- aluminium, anodized natural (silver)
- Other surfaces: on request



Machine Handle, half round	L	L1	L2	H	H1	Aluminium anodized
mm / inch	112 / 4.409	122 / 4.803	102 / 4.016	50 / 1.969	40 / 1.575	213-0513.96-00112
	128 / 5.039	138 / 5.433	118 / 4.646	50 / 1.969	40 / 1.575	213-0513.96-00128
	160 / 6.229	170 / 6.693	150 / 5.906	50 / 1.969	40 / 1.575	213-0513.96-00160