

### 4-183 Hinge Pr05 180°

Lift-off, Adjacent cabinets, door bending 25mm for surface mounted door

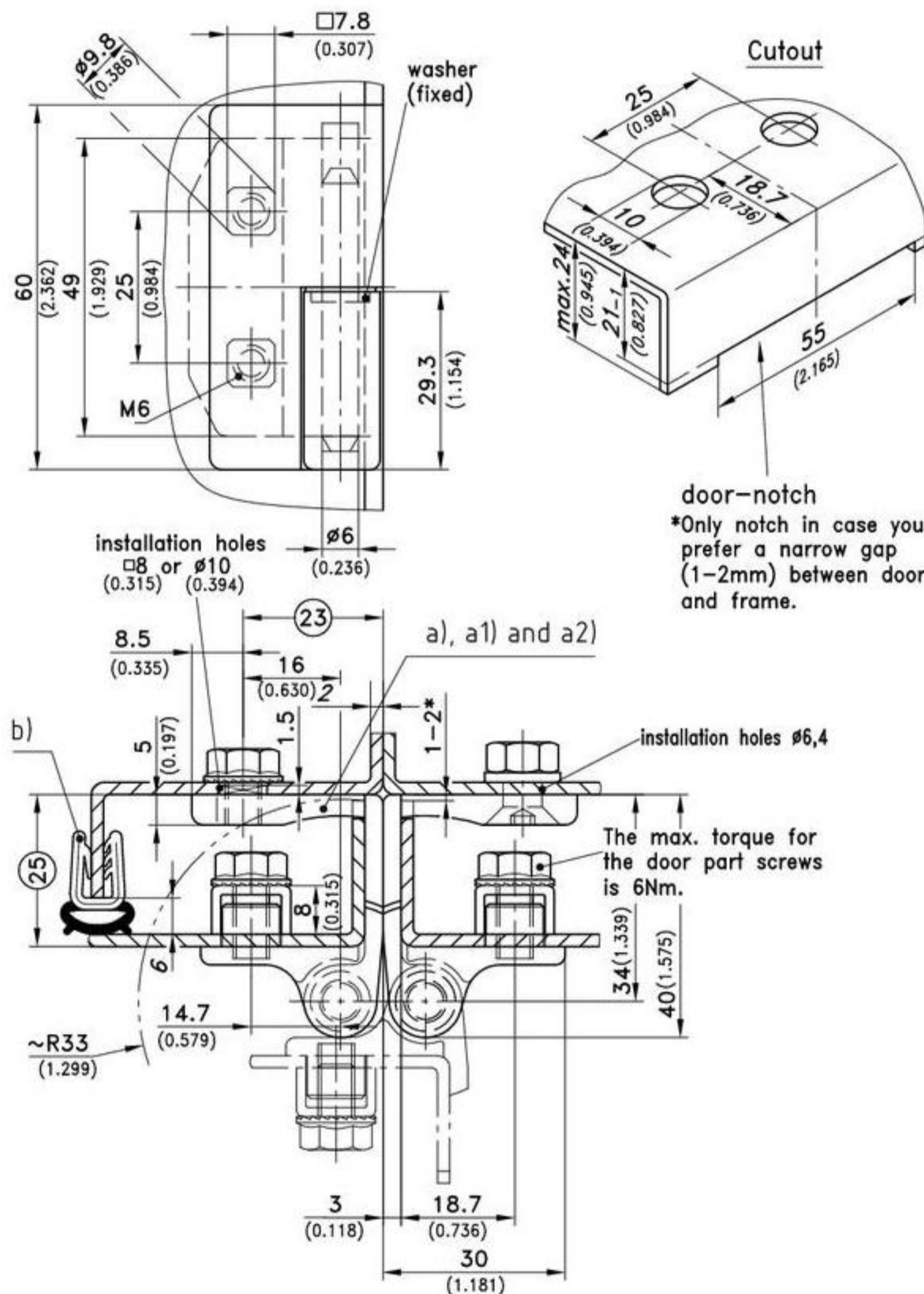


180° Hinge for surface mounted door.

- Door is lift-off.
- Opening angle 180°.
- With M6 threaded stubs for fastening from inside, or 6mm screws from outside.
- The optional notch in the bending (dimension 55) is being concealed by the 60mm wide frame-part.
- Door thickness 4mm.

**Material:**

- a) and a1)
- **Frame part and door part:** zinc die, black or chrome plated
- **Pin:** stainless steel
- **Washer:** brass a2)
- **Door part:** zinc die, black coated
- **Frame part:** steel, black coated
- **Pin:** stainless steel
- **Washer:** stainless steel



| Version  | chrome plated RH | chrome plated LH | black RH | black LH | see page |
|--|------------------|------------------|----------|----------|----------|
| a) Frame part (zinc die) with M6 threaded stubs      | 212-9042         | 212-9044         | 212-9046 | 212-9048 |          |
| a1) Frame part (zinc die) with 6mm countersunk holes | 212-9043         | 212-9045         | 212-9047 | 212-9049 |          |
| a2) as a), but with steel frame part                 | -                | -                | 212-9082 | 212-9083 |          |
| b) i.e. Clip-On Profiles                             |                  |                  | 209-0201 |          | 07.19    |