

## 1-450 Explosion-Tight Door Furniture

for medium and high voltage distribution boards



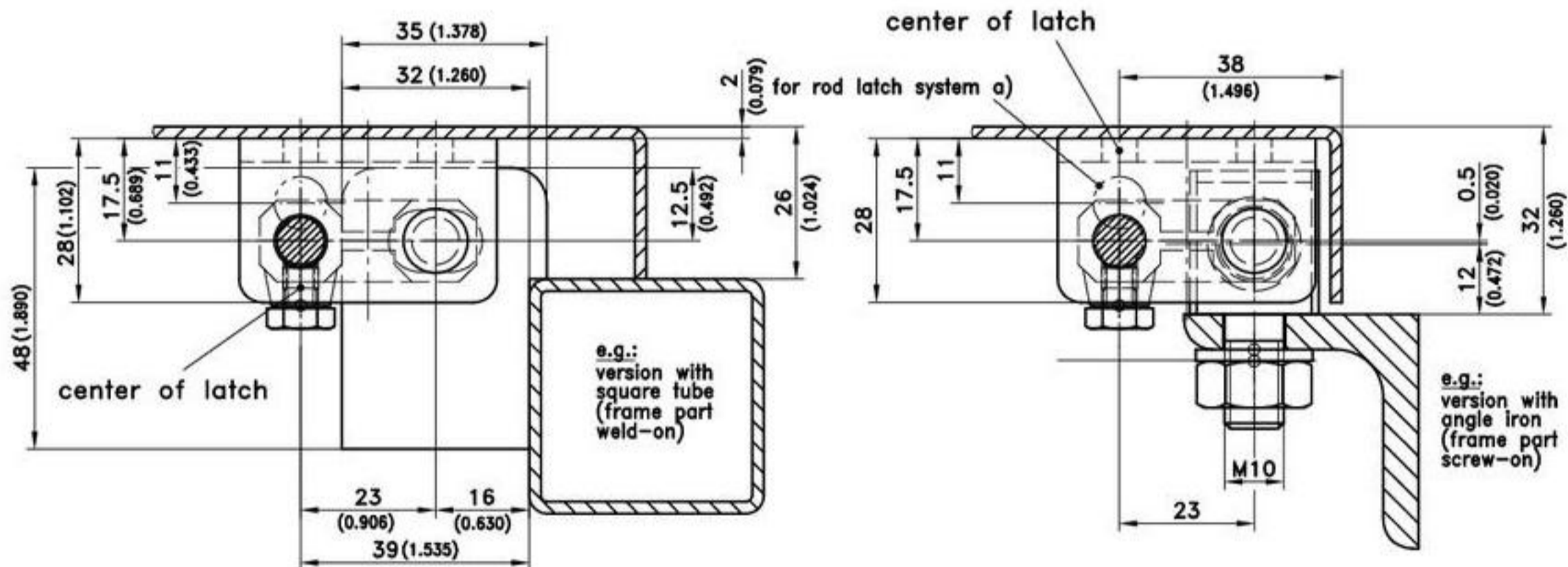
Unit for explosion tight doors.

- This system can also be controlled by a Swing-handle with a Profile Cylinder.

### Material:

- a)
- **Rod Latch:**  
steel, zinc plated or zinc die
- **Escutcheon:**  
PA, black
- **Insert:**  
zinc die, chrome plated  
a1)
- **Rod:**  
steel, zinc plated  
b)
- **Rod Latch:**  
steel, zinc plated or zinc die
- **Lock support:**  
steel, zinc plated
- **Insert:**  
zinc die, chrome plated

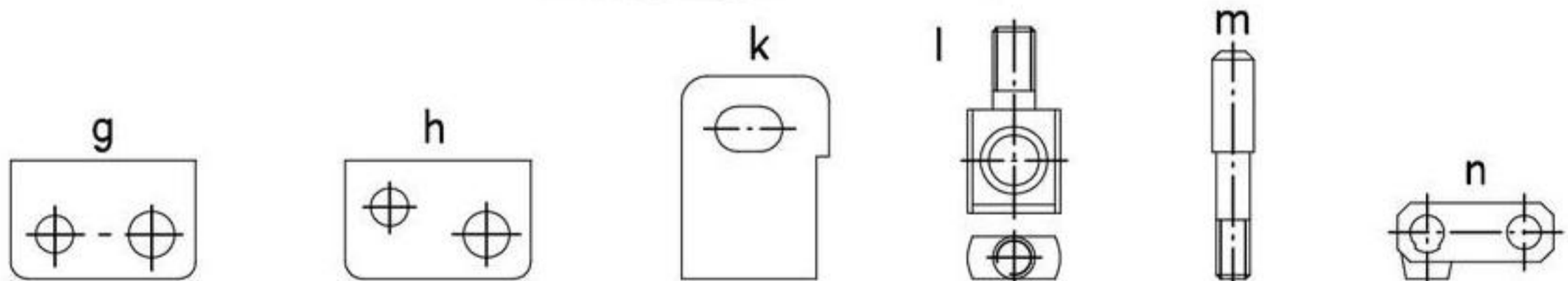
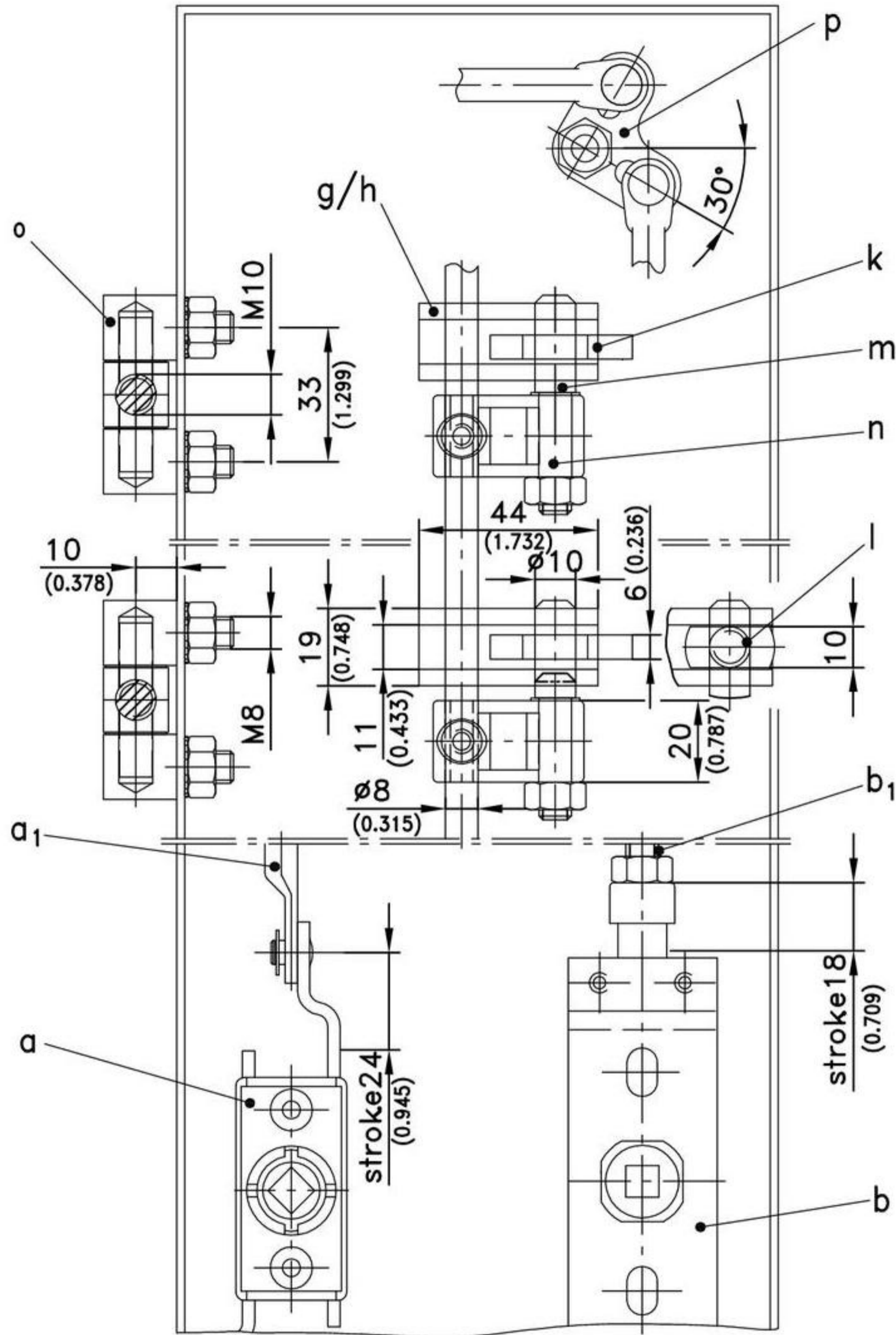
- **Escutcheon:**  
zinc die, chrome plated  
b1)
- **Round rods:**  
steel, zinc plated  
g) and h)
- **Weld-on U-bracket 215-0101 and 215-0101.00-00001:**  
steel, untreated  
k)
- **Frame part eye 215-0201:**  
steel, untreated  
l)
- **Screw-on eye 215-0401:**  
steel, zinc plated  
m)
- **Connecting pin 215-0501 and fixing pieces:**  
steel, zinc plated  
n)
- **Link 215-9101:**  
zinc die
- \* **Special version on request.**



	Part No.	see page
a) Rod latch RH/LH	208-9001	
Escutcheon	208-9302	
Insert double bit 5	208-9207	
a1) Rod with eye length L		
400 / 15.748	201-0102	
600 / 23.622	201-0104	
800 / 31.496	201-0106	
1000 / 39.370	201-0108	
1200 / 47.244	201-0110	
e) Set of explosion tight-fittings (frame part weld-on)	215-9003	
f) Set of explosion tight-fittings (frame part screw-on)	215-9004	
b) Latch system		02.64
Rod-latch for round rod threaded M8, without cam (stroke 18)		
RH	235-9013	
LH	235-9014	
Lock support	235-1001	
Double bit 5 pin	235-9108	
Escutcheon:	235-9201	
b1) Round rods Ø8 with threaded M8		
Length L=1000 / 39.370	201-0801-1000	
c) Set of explosion tight-fittings (frame part weld-on)	215-9001	
d) Set of explosion tight-fittings (frame part screw-on)	215-9002	
o) Srew-on hinge		06.62
p) Redirection		02.69

# 1-450 Explosion-Tight Door Furniture

for medium and high voltage distribution boards



	U-bracket, series 235	U-bracket, series 208	frame part eye	screw-on eye	connecting pin	link
	215-0101	215-0101.00-00001	215-0201*	215-0401	215-0501	215-9101
c)	215-9001	X	X		X	X
d)	215-9002	X		X	X	X
e)	215-9003		X		X	X
f)	215-9004		X	X	X	X