

## 1-205 Compression-Latch



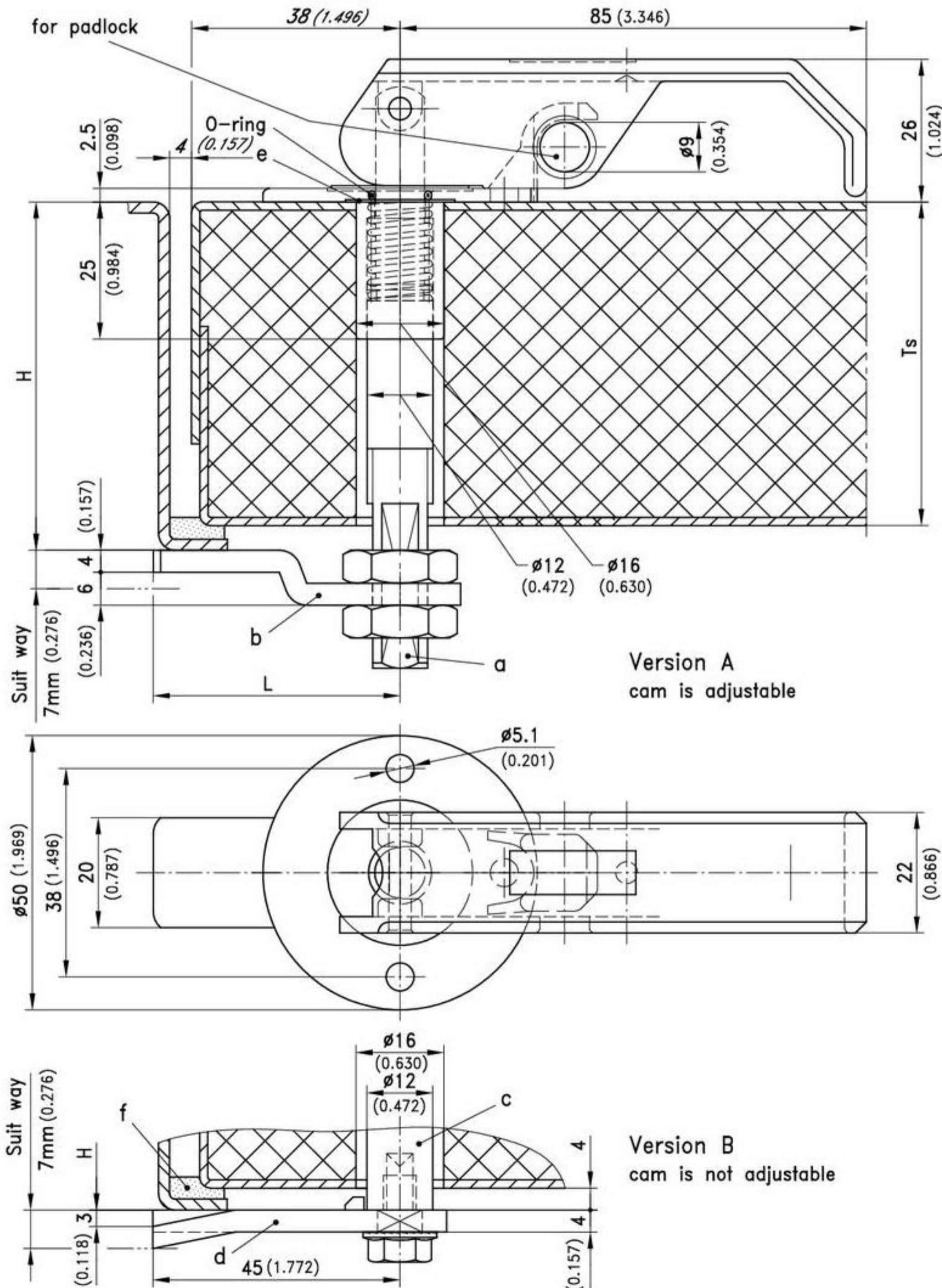
Compression latch in two versions.

- Cam can be positioned at 4x90°.
- Version A: Install with rivets or screws. Adjustable H dimension.
- Version B: Install with rivets or screws. Non adjustable cam.
- All versions are lockable with padlock.

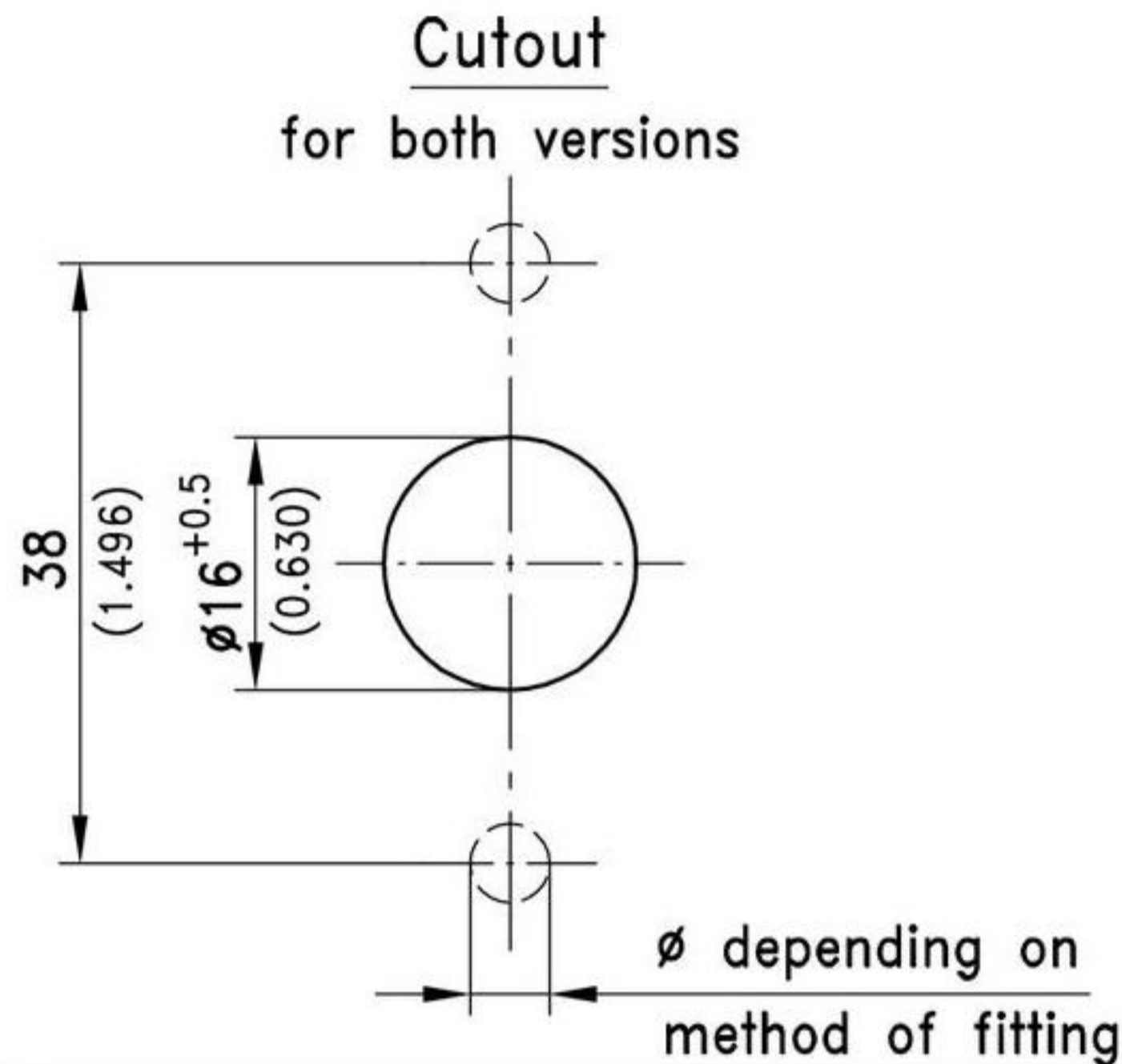
- Versions of Compression Latches with round housings, as drawn, however with 4 mounting holes as well as oval housings and 3 mounting holes on request.

**Material:**

- a), a1), c) and c1)
- **Compression-Latch:** zinc die, black or zinc plated
- **Shaft:** steel, zinc plated
- b), b1) and d)
- **Cams:** steel, zinc plated



## 1-205 Compression latch



Version A cam is adjustable						see page
a)	Compression-Latch (zinc die, black)	200-9935	200-9936	200-9937	200-9938	
a1)	Compression-Latch (zinc die, zinc plated)	200-9939	200-9940	200-9941	200-9942	
	Door-thickness	Ts max.	50 / 1.969	70 / 2.756	90 / 3.543	110 / 4.331
	Frame size	H	30-60	50-80	70-100	90-120
		inch	1.181-2.362	1.969-3.150	3.756-3.937	3.543-4.724
		L in mm/inch				
b)	Cam bent	45 / 1.772	200-5507-45	200-5507-45	200-5507-45	200-5507-45
	Cam bent	60 / 2.362	*200-5507-60	*200-5507-60	*200-5507-60	*200-5507-60
b1)	Cam straight	45 / 1.772	200-5508-45	200-5508-45	200-5508-45	200-5508-45
	Cam straight	60 / 2.362	*200-5508-60	*200-5508-60	*200-5508-60	*200-5508-60
	Cam straight	65 / 2.559	200-5508-65	200-5508-65	200-5508-65	200-5508-65
* Price and delivery time on request						

Version B cam is not adjustable						
c)	Compression-Latch (zinc die, black)	200-9916	200-9918	200-9920	200-9922	
c1)	Compression-Latch (zinc die, zinc plated)	200-9926	200-9928	200-9930	200-9932	
	Door-thickness	Ts max. mm / inch	42 / 1.653	62 / 2.440	82 / 3.228	102 / 4.015
d)	Cam L=45mm					
		Part No.	frame size H mm / inch			
		200-0404	32 / 1.260	52 / 2.047	72 / 2.835	92 / 3.622
		200-0406	34 / 1.339	54 / 2.126	74 / 2.913	94 / 3.701
		200-0408	36 / 1.417	56 / 2.205	76 / 2.992	96 / 3.780
		200-0410	38 / 1.496	58 / 2.283	78 / 3.071	98 / 3.858
		200-0413	41 / 1.614	61 / 2.402	81 / 3.189	101 / 3.976
		200-0414	42 / 1.654	62 / 2.441	82 / 3.228	102 / 4.016
		200-0416	44 / 1.732	64 / 2.520	84 / 3.307	104 / 4.094
		200-0418	46 / 1.811	66 / 2.598	86 / 3.386	106 / 4.173
		200-0420	48 / 1.890	68 / 2.677	88 / 3.465	108 / 4.252
		200-0422	50 / 1.969	70 / 2.756	90 / 3.543	110 / 4.331
		200-0424	52 / 2.047	72 / 2.835	92 / 3.622	112 / 4.409
		200-0426	54 / 2.126	74 / 2.913	94 / 3.701	114 / 4.488

Additional cams 02.58, 02.61

Please order separately:  
Water- and dust-tight according to IP65 by:  
e) Flat external seal: 200-0902  
The O-Ring is already installed.